

0247 401 2020 | [enquiries@globalhouseestates.com](mailto:enquiries@globalhouseestates.com)

## VINCENT COURT, STOCKWELL, LONDON

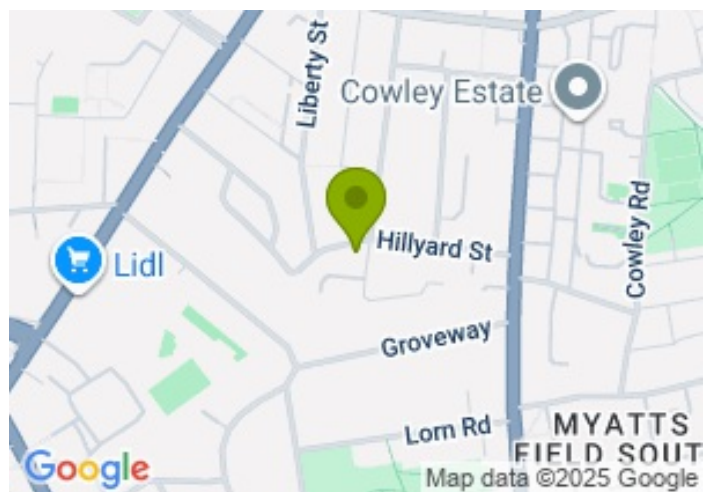
£399,000.00



FOR SALE



- Spacious and modern one bedroom flat
- Gated parking space
- Fantastic location
- Well maintained
- Abundance of natural light
- Ample storage space
- Communal gardens
- Third Floor



## Property Description

Nestled in a quiet area between Kennington and Stockwell, in a greatly maintained block, this one bedroom flat offers a tranquil retreat from the city life.

Upon entering, you are greeted by the bright hallway leading you into the apartment. The spacious living and dining area seamlessly connects to the kitchen, equipped with integrated appliances. The apartment's windows perfectly capture the natural light throughout the day.

Storage options abound, from the hallway cupboard to the built-in storage in the large double bedroom, and more available in the attic. The property features a three-piece bathroom and double-glazed windows throughout which enhance energy efficiency, ensuring a comfortable environment year-round.

Off street parking is also included for residents as well as access to a communal green area.

Commuting is simple, with great transport links; both Stockwell and Oval tube station are available at a walkable distance, and multiple bus stops at just 6 minutes away.

Immerse yourself in the vibrant local atmosphere brimming with art and cultural significance, highlighted by the nearby Van Gogh house where the renowned artist lived in the early 19th century, situated just down the street. Additionally, the convenience of nearby shops, restaurants, and parks, offer a plethora of amenities to explore and enjoy.

Length of lease: approx. 93 years remaining

Service charge: circa £1324 per annum + Insurance costs: £430 per annum

Ground rent: £110.00 per annum (until 2043)

Property is currently tenanted. Please, contact us for further information.

All data and information set forth on this website regarding real property, for sale, purchase, rental and/or financing, are from sources regarded as reliable. No warranties are made as to the accuracy of any descriptions and/or other details and such information is subject to errors, omissions, changes of price, tenancies, commissions, prior sales, leases or financing, or withdrawal without notice. Square footages are approximate and may be verified by consulting a professional architect or engineer.

## Viewing

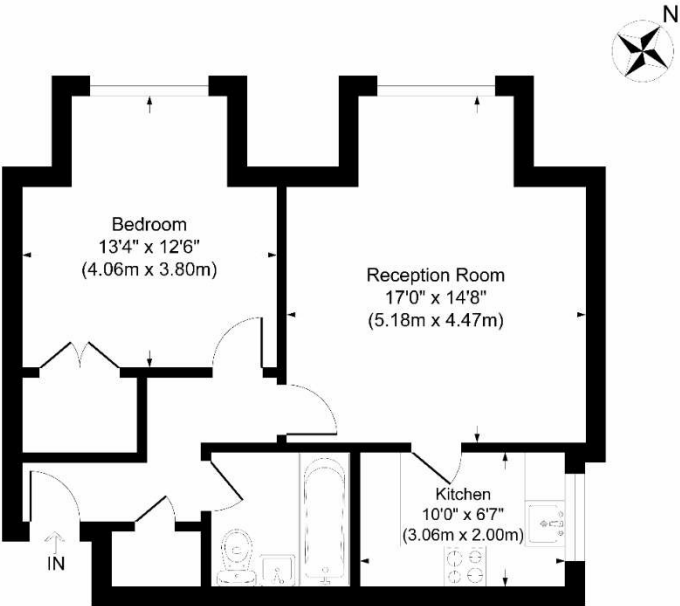
Please contact our Global House Estates Ltd Office on 0207 401 2020 if you wish to arrange a viewing appointment for this property or require further information.

## Disclaimer

This website provides information about buying, selling, renting UK property. The information is from reliable sources, but we can't guarantee that it's always accurate. There may be mistakes or changes in the information, such as price, availability, leases, or financing. The square footage is also

an estimate and should be confirmed by a professional architect or engineer.

# Floor plan



Third Floor



## Vincent Court 96 Hackford Road

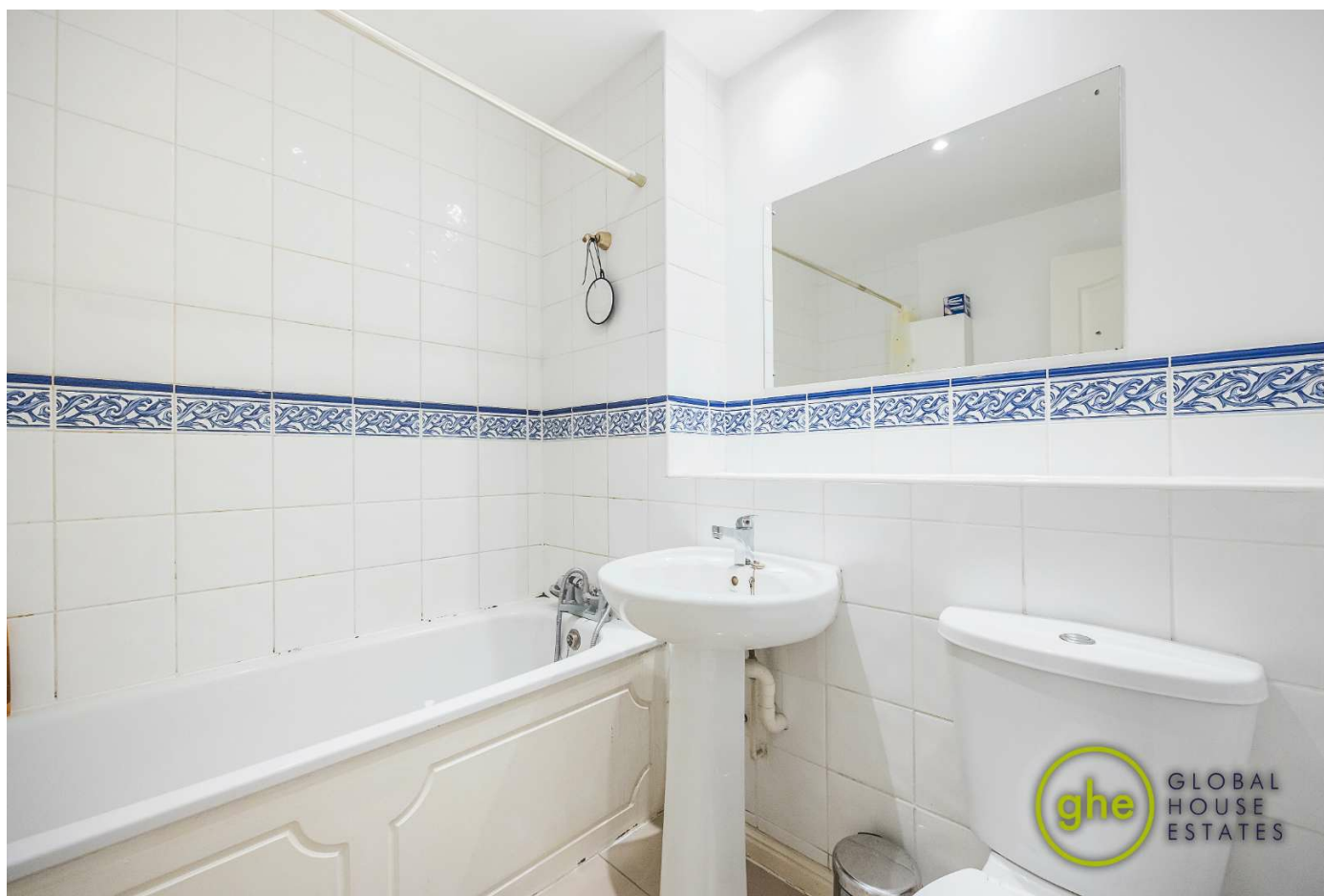
Approximate Gross Internal Area  
Total = 54.6 sq m / 588 sq ft

This plan is for layout guidance only. Not drawn to scale unless stated. Windows and door openings are approximate. Whilst every care is taken in the preparation of this plan, please check all dimensions, shapes and compass bearings before making any decisions reliant upon them.

powered by: **THE360IMAGE**  
[www.the360image.co.uk](http://www.the360image.co.uk)







35a St Georges Road, London,  
SE1 6EW  
+44 (0) 207 401 2020

<https://globalhouseestates.com>

Level 24, Lee Garden One,  
33 Hysan Ave, Causeway Bay,  
Hong Kong  
+852 3963 8411