

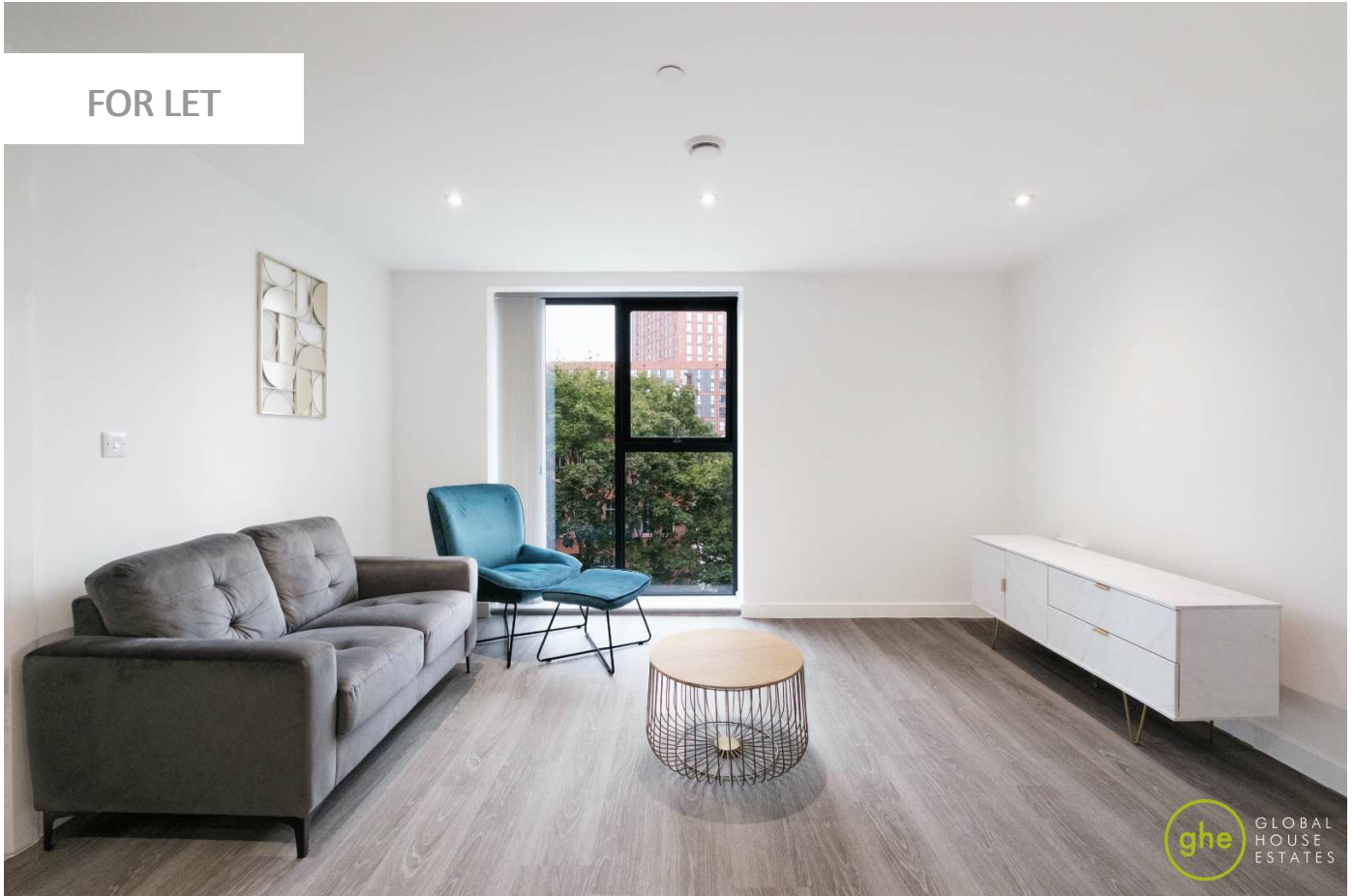
0247 401 2020 | enquiries@globalhouseestates.com

BLOCK C, SALFORD, MANCHESTER

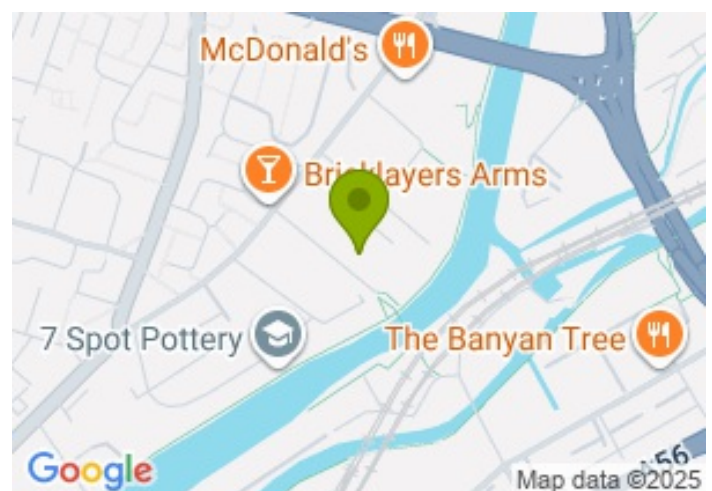
£1,500.00



FOR LET



- 2 bedroom apartment / fully furnished
- One parking space is included
- Council Tax Band: B
- 24/7 concierge service, fob entry, and intercom systems to all apartments
- Gym, sauna, residents lounges, business suite, cinema room and communal terrace
- Available now!



Property Description

GHE is delighted to offer this stunning two double bedroom, two bathroom apartment in the popular Downtown development with unmatched views over the River Irwell.

Located on the banks of the River Irwell and adjacent to the historic quarter of Castlefield, Downtown is a prestigious “hotel-style” development. The Manhattan-inspired development has been specifically designed to exceed all expectations.

This apartment property briefly comprises of a spacious open plan living and kitchen area, whilst the kitchen enjoys a host of built in appliances.

Furthermore, the property comprises of two well-sized double bedrooms, each with its own modern three piece en suite, both including a bath. The main en suite offers a dual-access design, accessed via both the living area and bedroom.

Downtown is Manchester’s premier residence with a host of hotel-style services, including a 24/7 concierge located within the lobby, an onsite gymnasium and spa, residents lounges, business suite, a media room for movies and rooftop terraces with outdoor chill out seating areas.

Please contact GHE to book a viewing!

All data and information set forth on this website regarding real property, for sale, purchase, rental and/or financing, are from sources regarded as reliable. No warranties are made as to the accuracy of any descriptions and/or other details and such information is subject to errors, omissions, changes of price, tenancies, commissions, prior sales, leases or financing, or withdrawal without notice. Square footages are approximate and may be verified by consulting a professional architect or engineer.

Viewing

Please contact our Global House Estates Ltd Office on 0207 401 2020 if you wish to arrange a viewing appointment for this property or require further information.

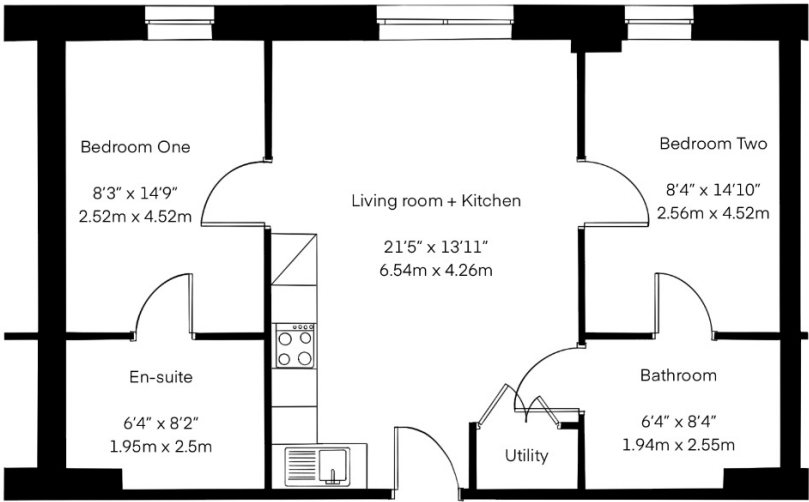
Disclaimer

This website provides information about buying, selling, renting UK property. The information is from reliable sources, but we can't guarantee that it's always accurate. There may be mistakes or changes in the information, such as price, availability, leases, or financing. The square footage is also an estimate and should be confirmed by a professional architect or engineer.

Floor plan

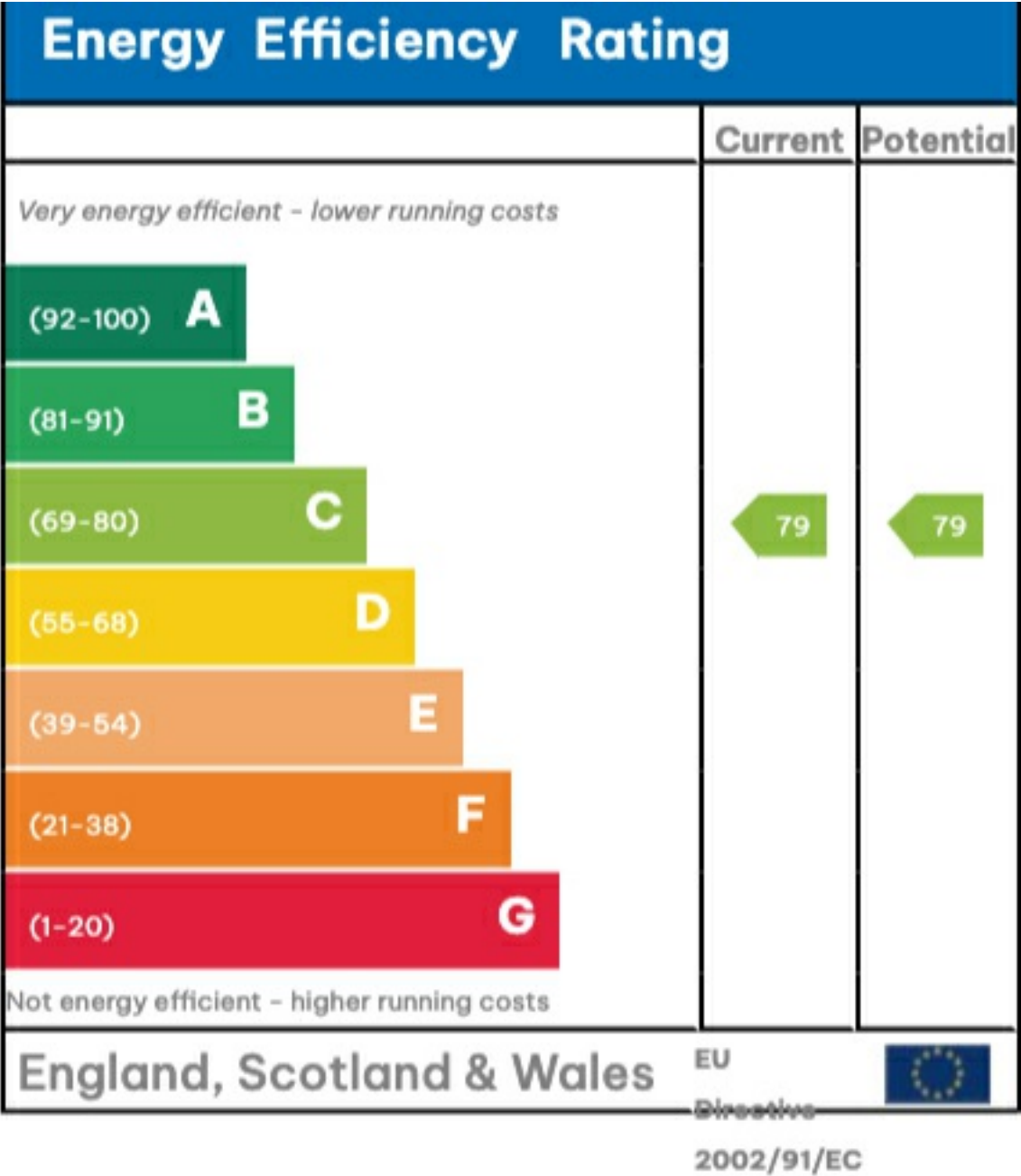
Approx. Total Area

63 sqm / 678 sqft

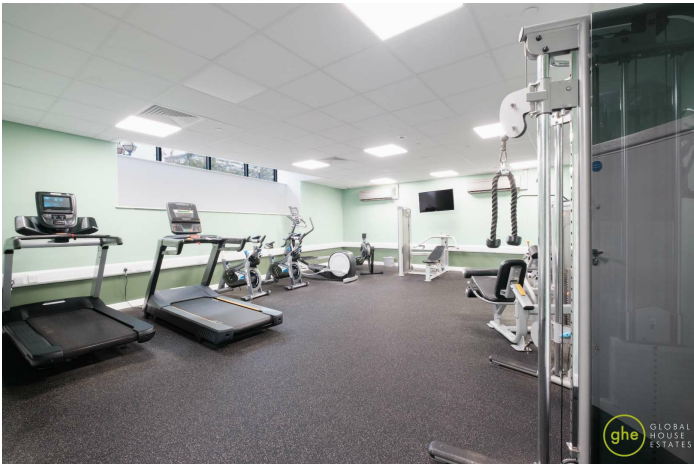


This floor plan is illustrative purposes only. It is not drawn to scale. Any measurements, floor areas (including any total floor area), openings and orientation are approximate. No details are guaranteed, they cannot be relied upon for any purpose and they do not form part of any agreement. No liability is taken for any error, omission or misstatement. A party must reply upon its own inspection(s).

EPC









35a St Georges Road, London,
SE1 6EW
+44 (0) 207 401 2020

<https://globalhouseestates.com>

Level 24, Lee Garden One,
33 Hysan Ave, Causeway Bay,
Hong Kong
+852 3963 8411