

0247 401 2020 | enquiries@globalhouseestates.com

EDITH ROAD, CROYDON, LONDON

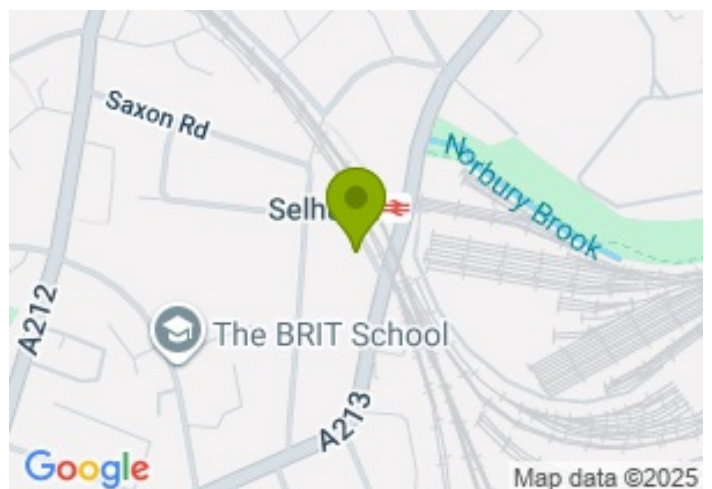
£455.77



FOR LET



- Two bedroom maisonette
- Brand new kitchen
- Two bathrooms
- New flooring
- Private terrace
- Private parking space
- Next to Selhurst station



Property Description

A beautifully refurbished two-bedroom maisonette arranged of 2 floors of stylish living space, perfectly positioned next to Selhurst station .

The property features two spacious double bedrooms, two well-appointed bathrooms, with the master bedroom benefiting from an en-suite bathroom. Both bathrooms are designed to a high standard, providing a touch of modern luxury.

The heart of this residence is the spacious open plan brand new kitchen, equipped with integrated appliances, along with ample cupboard space. It is open plan to a bright and airy living/dining room, creating a perfect space for entertaining or unwinding. From the living area, you have direct access to the private terrace.

This unfurnished property includes the use of an allocated parking space.

Well-situated, the flat is ideal for small families, couples, or two professional sharers. Selhurst Station is just a 2-minute walk away, and Thornton Heath Station is within a 15-minute walk, offering excellent transport links.

Viewing

Please contact our Global House Estates Ltd Office on 0207 401 2020 if you wish to arrange a viewing appointment for this property or require further information.

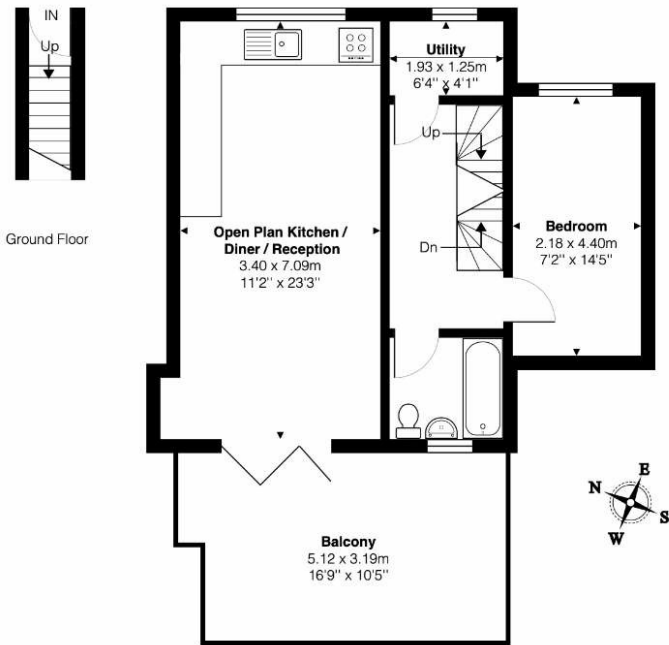
Disclaimer

This website provides information about buying, selling, renting UK property. The information is from reliable sources, but we can't guarantee that it's always accurate. There may be mistakes or changes in the information, such as price, availability, leases, or financing. The square footage is also an estimate and should be confirmed by a professional architect or engineer.

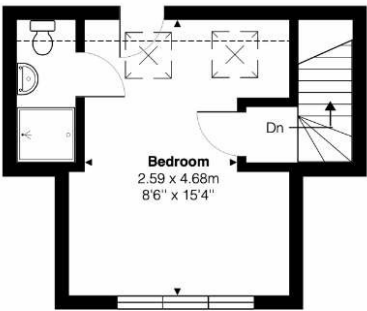
Floor plan

Edith Road, SE25

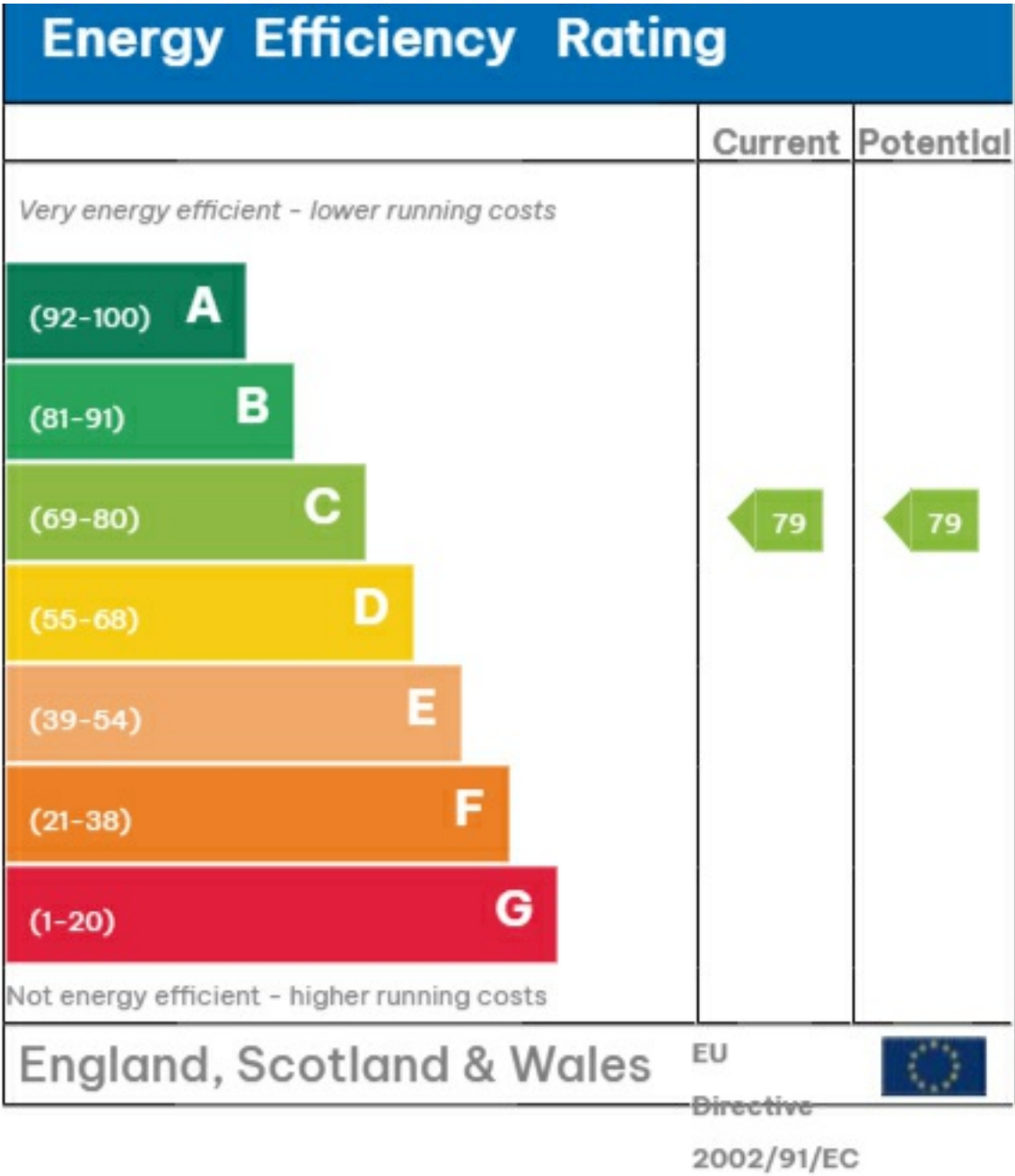
Total Area: 73.9 m² ... 795 ft² (excluding balcony)



First Floor



This Floor plan is provided without warranty, of any kind.
Bespoke Plans disclaims any warranty including,
without limitation, satisfaction, quality or accuracy of any dimensions







35a St Georges Road, London,
SE1 6EW
+44 (0) 207 401 2020

<https://globalhouseestates.com>

Level 24, Lee Garden One,
33 Hysan Ave, Causeway Bay,
Hong Kong
+852 3963 8411