

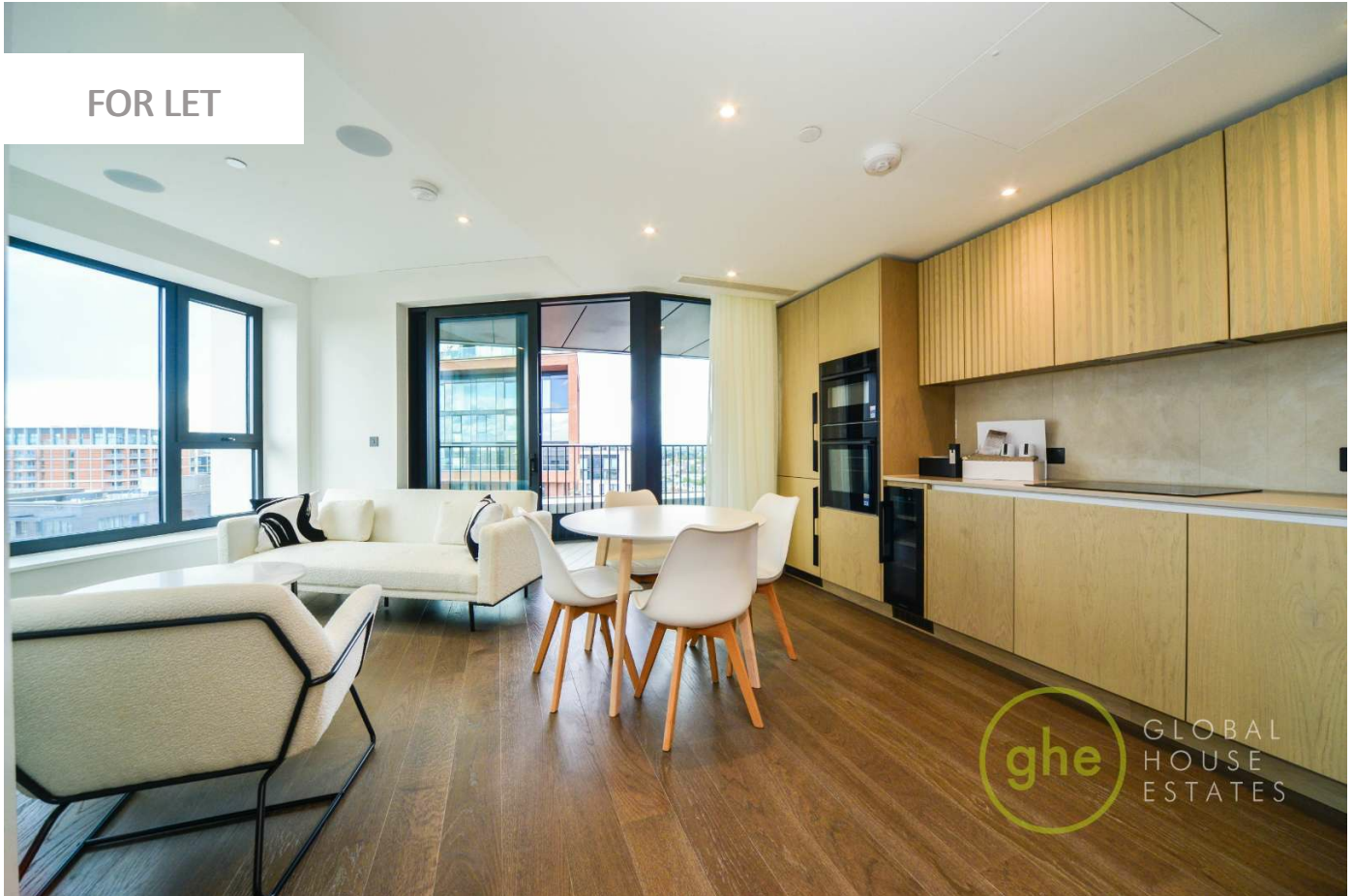
0247 401 2020 | enquiries@globalhouseestates.com

1 LINEAR PLACE, NINE ELMS, LONDON

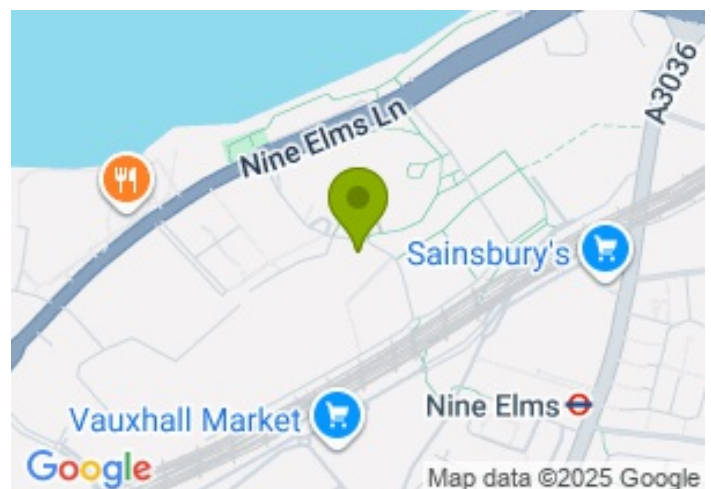
£3,500.00



FOR LET



- Brand new, one bedroom apartment
- 16th floor with wonderful river views
- Luxurious new development
- Private balcony
- Residents lounge and 24 hour concierge
- Club facilities available



Propety Description

A luxurious one bedroom apartment within this wonderful new development by London Square. The apartment is on the 16th floor and offers views over the roof tops below and the River Thames. The property is beautifully fitted with wood floors, a sleek integrated kitchen with all expected appliances plus a boiling water tap, a spacious reception room bathed in natural light and a private balcony. The bedroom is a good size with built in cupboards and the bathroom is well styled with both overhead and hand held shower. The entrance hallway includes a utility cupboard that houses the Siemens washer / dryer and useful storage. Included is a stylish furniture pack.

One Linear Place offers a 24 hour concierge and large residents lounge. Additionally there are separate club facilities with a gym, cinema room, private dining and lounges that is available under separate negotiation. Nine Elms Underground Station is close by and there a great selection of restaurants, shops and amenities locally.

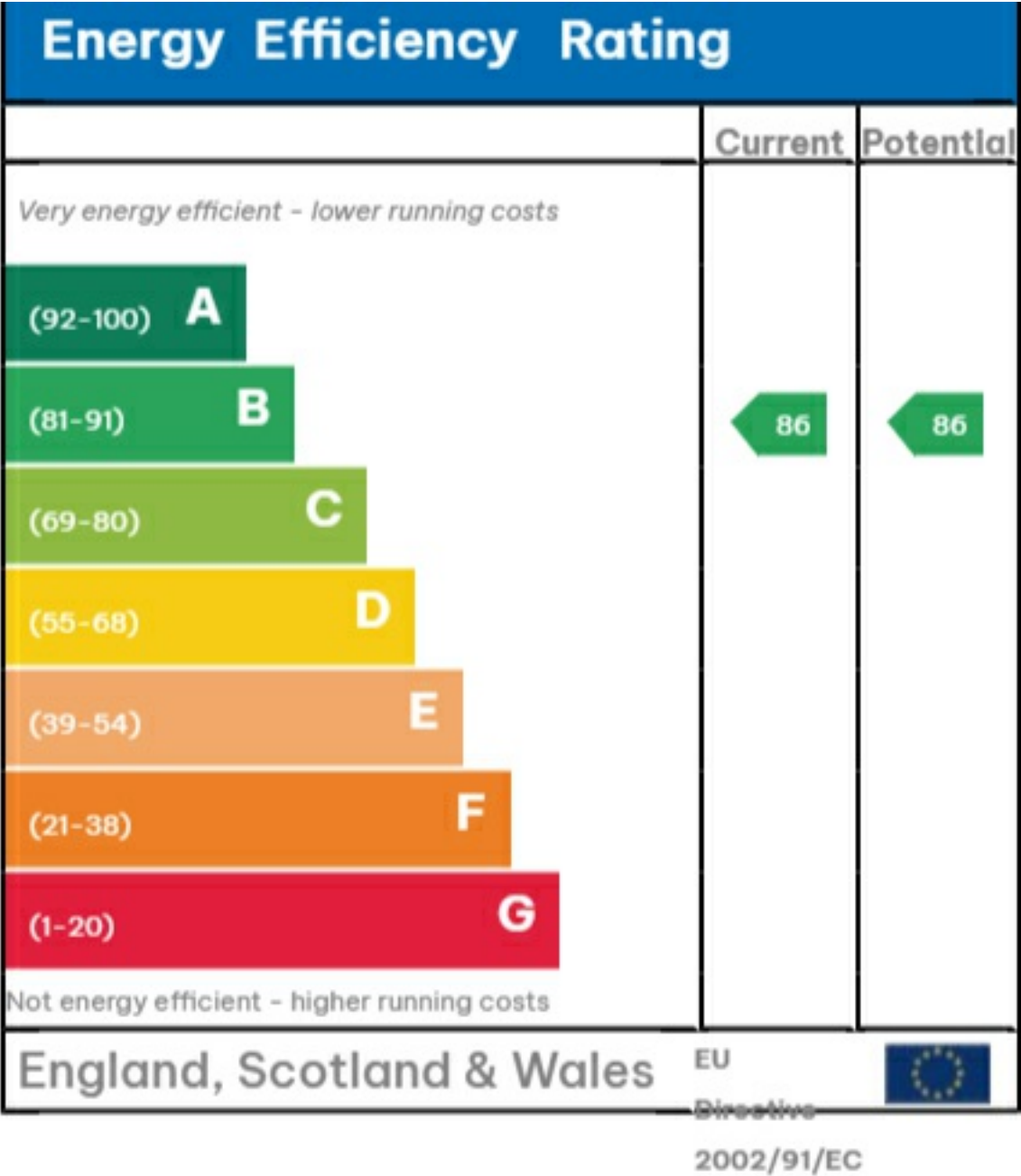
Viewing

Please contact our Global House Estates Ltd Office on 0207 401 2020 if you wish to arrange a viewing appointment for this property or require further information.

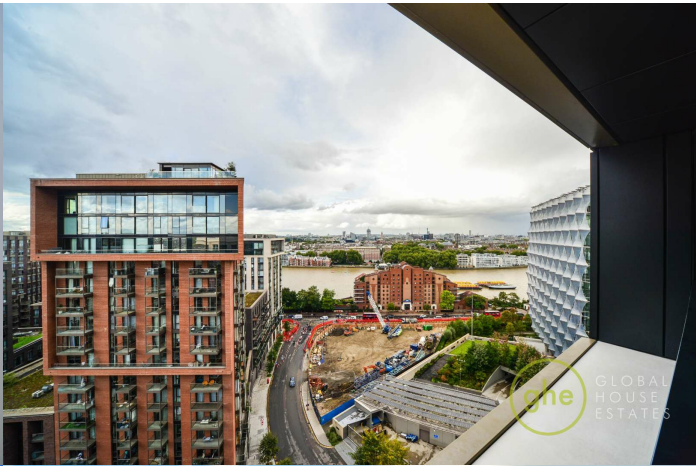
Disclaimer

This website provides information about buying, selling, renting UK property. The information is from reliable sources, but we can't guarantee that it's always accurate. There may be mistakes or changes in the information, such as price, availability, leases, or financing. The square footage is also an estimate and should be confirmed by a professional architect or engineer.

EPC









35a St Georges Road, London,
SE1 6EW
+44 (0) 207 401 2020

<https://globalhouseestates.com>

Level 24, Lee Garden One,
33 Hysan Ave, Causeway Bay,
Hong Kong
+852 3963 8411