

0247 401 2020 | [enquiries@globalhouseestates.com](mailto:enquiries@globalhouseestates.com)

## MEADOWVIEW CLOSE, HARROW & WEALDSTONE, LONDON

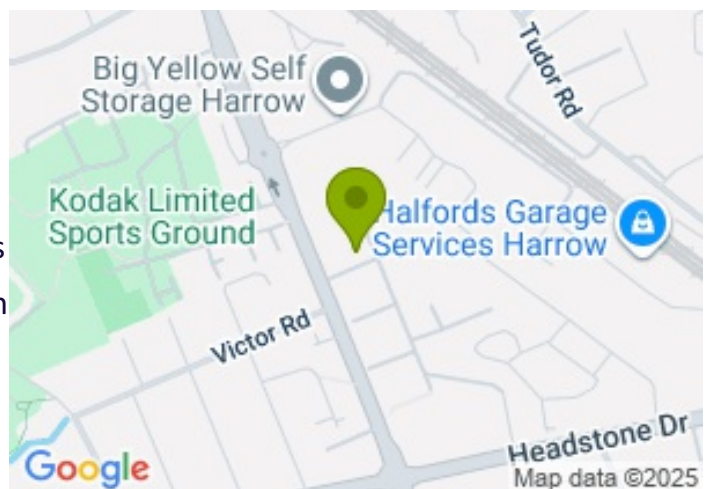
£508.00



FOR LET



- Two double bedroom, two bathroom apartment
- Modern apartment in superb development
- Private terrace
- Superb location with excellent transport links
- Residents gardens, concierge and on site gym
- Secure underground parking
- East facing balcony
- Underfloor heating



## Property Description

Step into contemporary living with this beautifully designed two double-bedroom, two-bathroom apartment, set within the sought-after Eastman Village development by Barratt Homes. Combining modern style with comfort and practicality, this home offers the perfect balance of elegance and convenience.

The apartment boasts bright, airy interiors with floor-to-ceiling windows that flood the rooms with natural light, while the private terrace provides a serene space to relax and take in the charming views over the rooftops. The sleek, modern finish is complemented by ample built-in storage throughout, ensuring the home is as functional as it is stylish. A private underground parking space adds to the ease of living.

Both bedrooms are generously sized doubles, with the master featuring an en-suite bathroom, while the second bathroom is equally well-appointed in a chic, contemporary style. The Landlord also offers flexibility with furnishings, allowing you to truly make the space your own.

Located within walking distance of Harrow & Wealdstone station, residents benefit from superb transport links, including the Bakerloo Line and fast mainline services to Central London – with Euston reachable in just 13 minutes.

This property is ideal for professionals, couples, or small families seeking a stylish home in a vibrant and well-connected community.

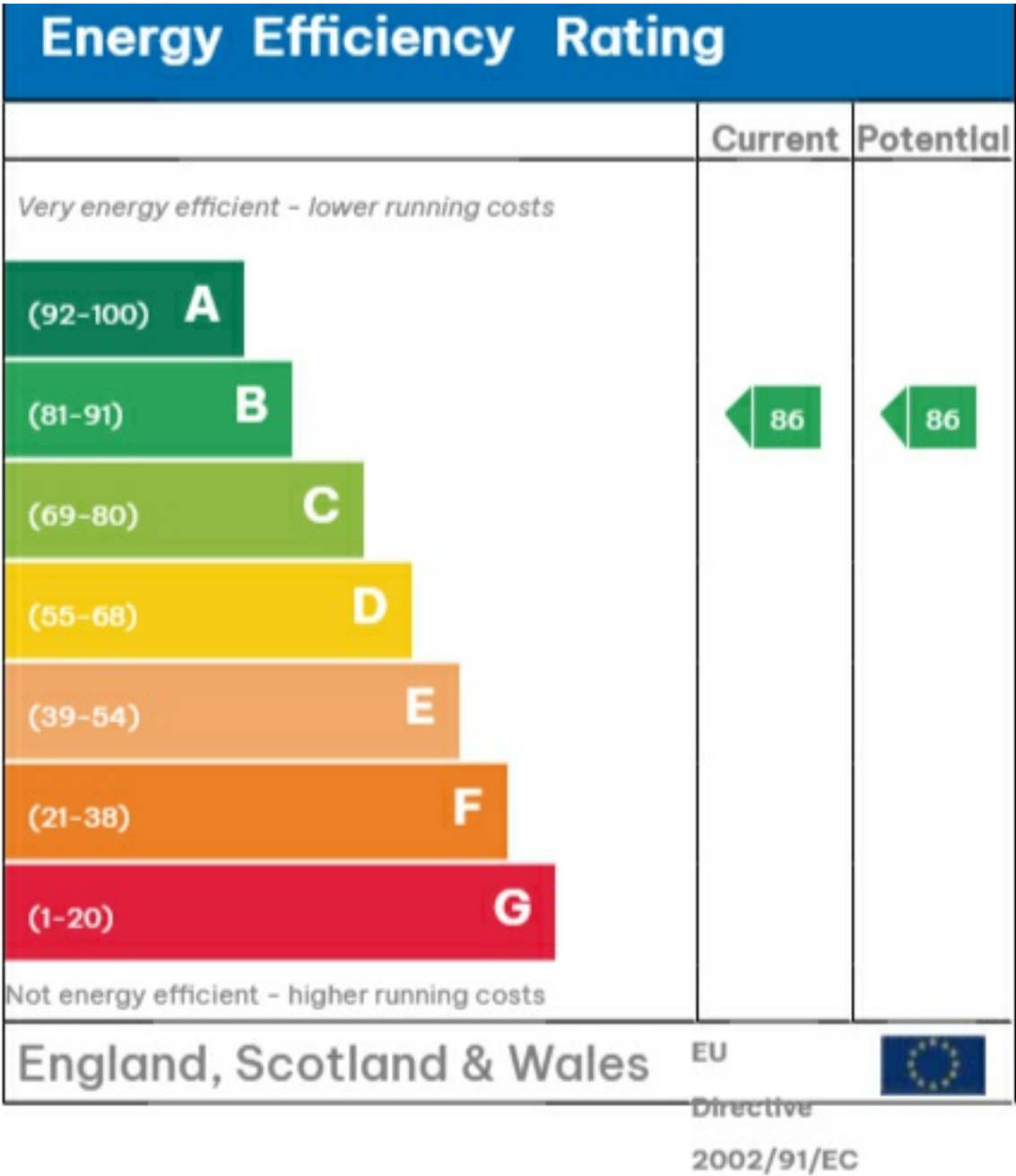
## Viewing

Please contact our Global House Estates Ltd Office on 0207 401 2020 if you wish to arrange a viewing appointment for this property or require further information.

## Disclaimer

This website provides information about buying, selling, renting UK property. The information is from reliable sources, but we can't guarantee that it's always accurate. There may be mistakes or changes in the information, such as price, availability, leases, or financing. The square footage is also an estimate and should be confirmed by a professional architect or engineer.

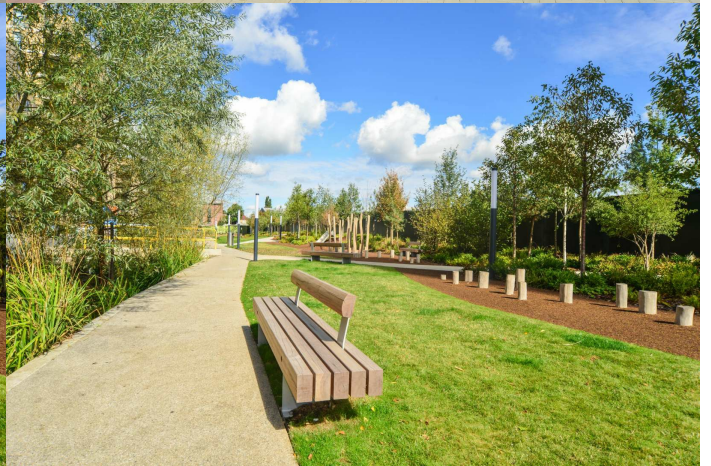
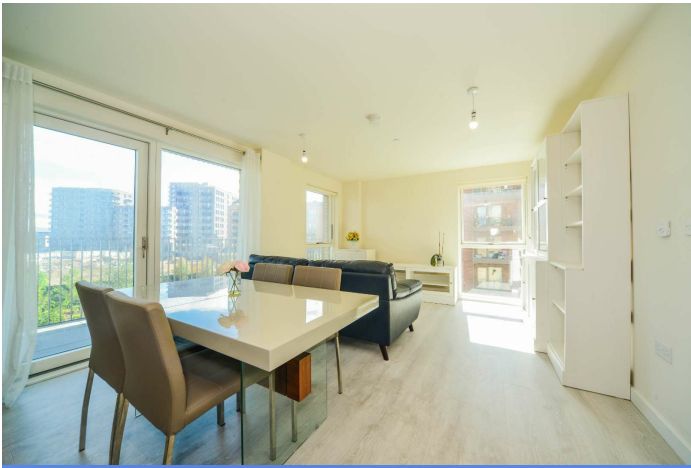
EPC



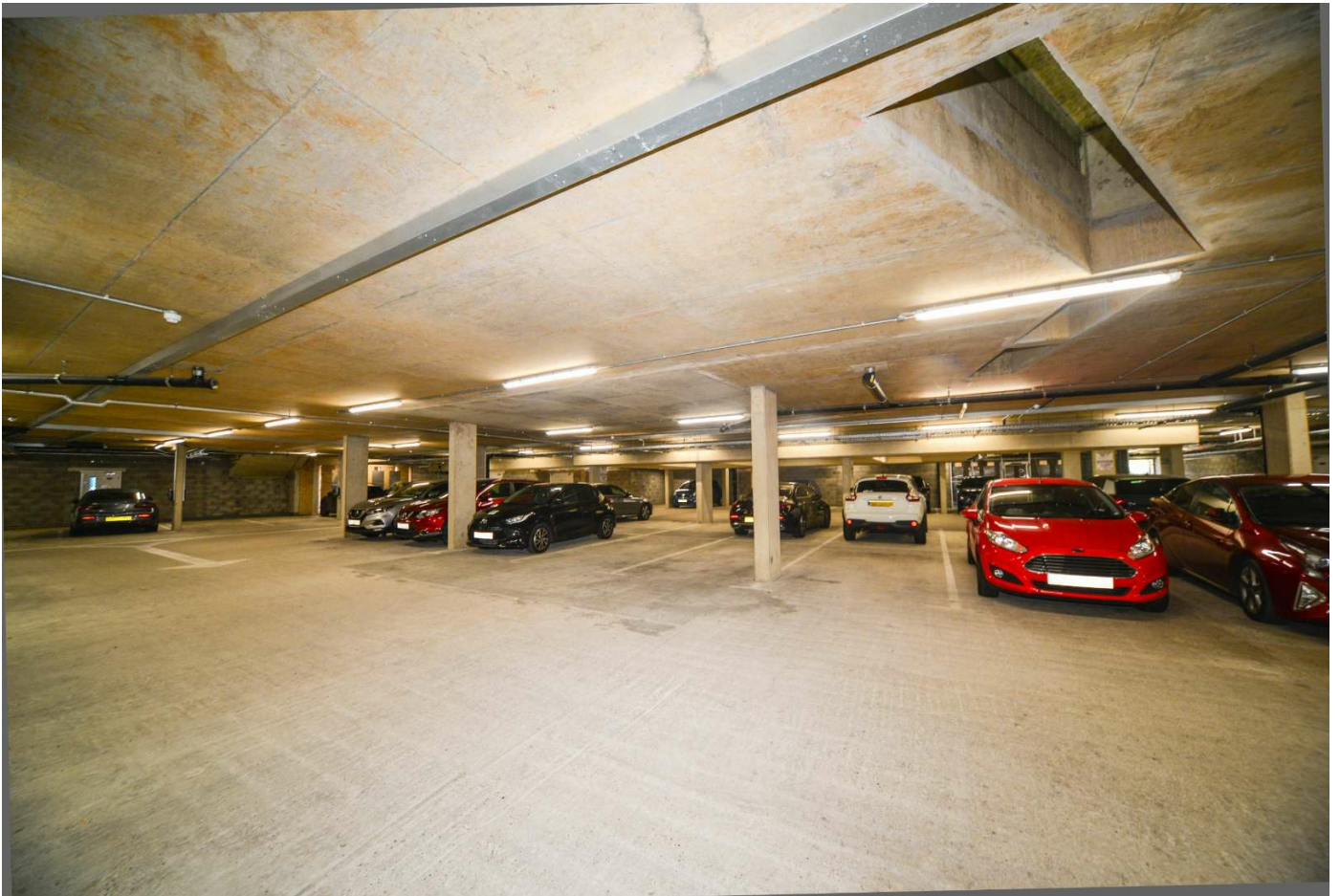












35a St Georges Road, London,  
SE1 6EW  
+44 (0) 207 401 2020

<https://globalhouseestates.com>

Level 24, Lee Garden One,  
33 Hysan Ave, Causeway Bay,  
Hong Kong  
+852 3963 8411