

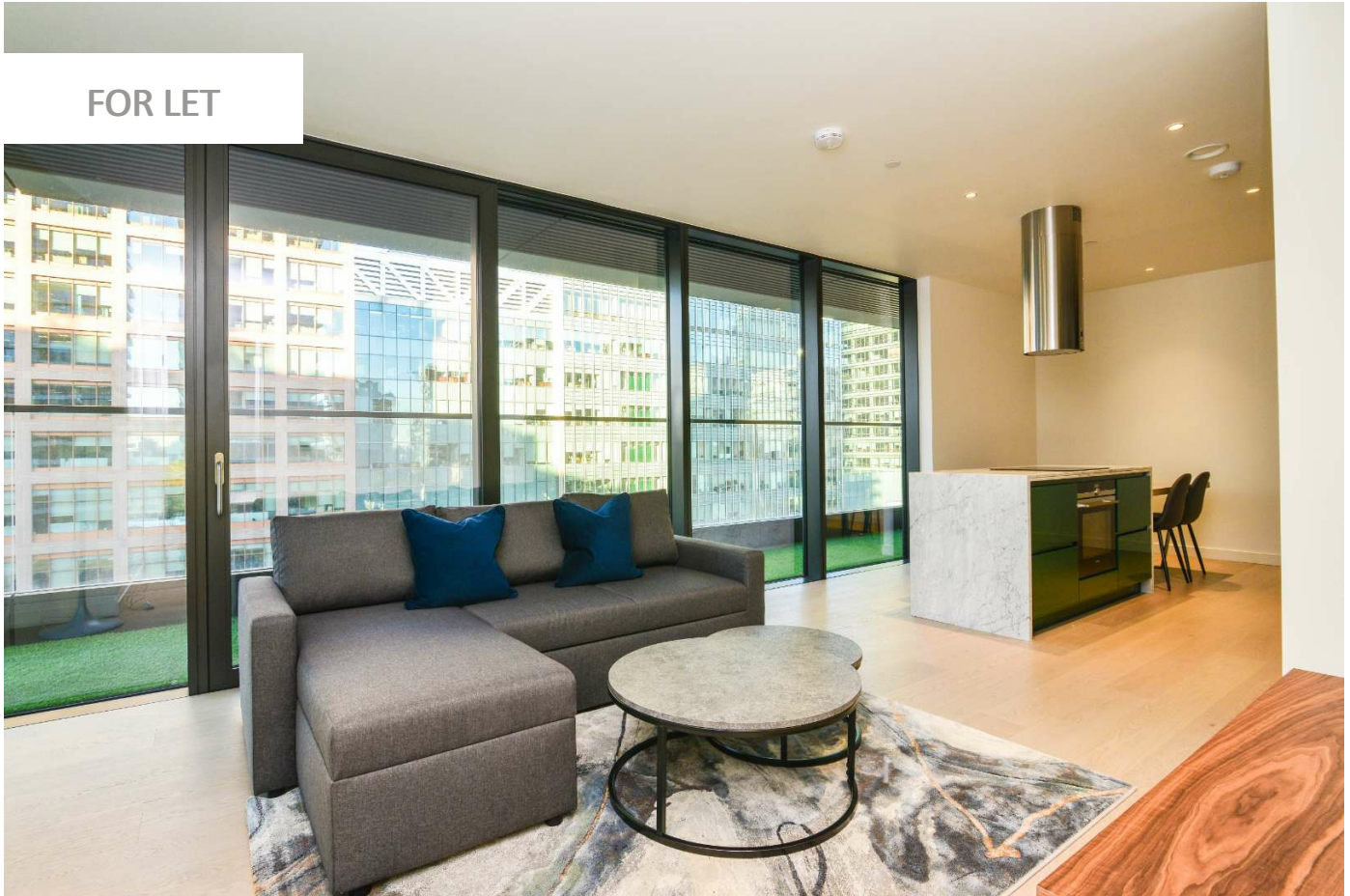
0247 401 2020 | enquiries@globalhouseestates.com

1 WARDS PLACE, CANARY WHARF, LONDON

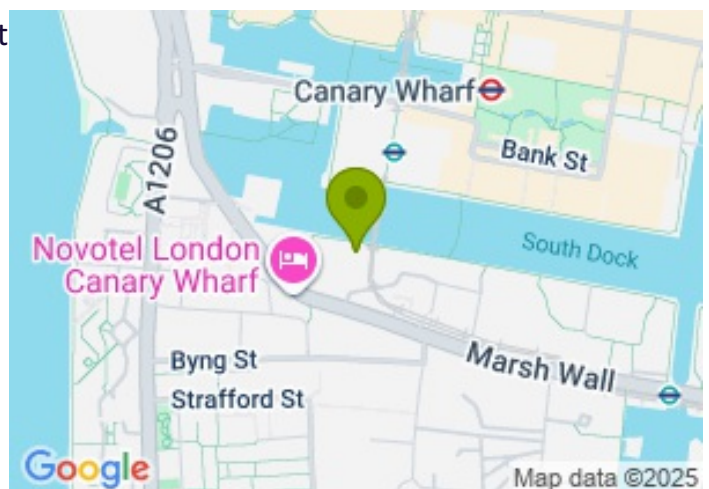
£715.00



FOR LET



- Stunning, 640 sq. ft. one bedroom apartment
- Large wrap around 291 sq. ft. private terrace
- Recently built apartment with supreme fit and finish
- Incredible 53rd Floor residents lounge and bar
- Huge gym, 25 metre outdoor heated pool, residents cinema room
- Brilliantly located near to Canary Wharf Station
- Council tax band E



Propety Description

A stunning one bedroom apartment within the incredibly impressive Wardian development on the banks of South Dock in Canary Wharf. The apartment is beautifully finished with solid oak floors, a striking green integrated kitchen, stylish tiled bathroom and a spacious bedroom. Outside you have your own wrap around private terrace of almost 300 sq ft, which overlooks the water and surrounding skyscrapers.

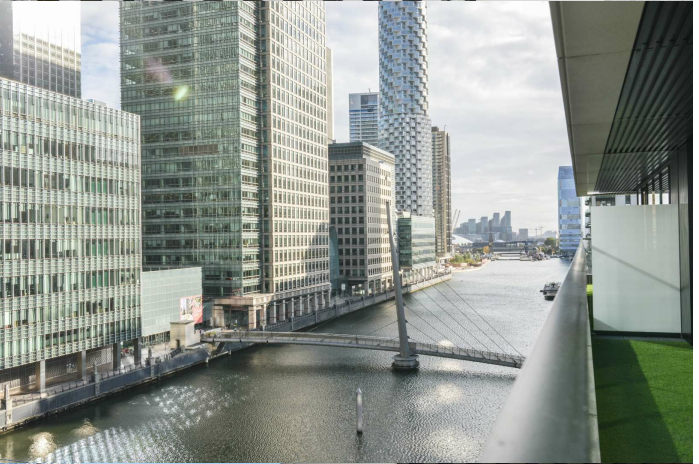
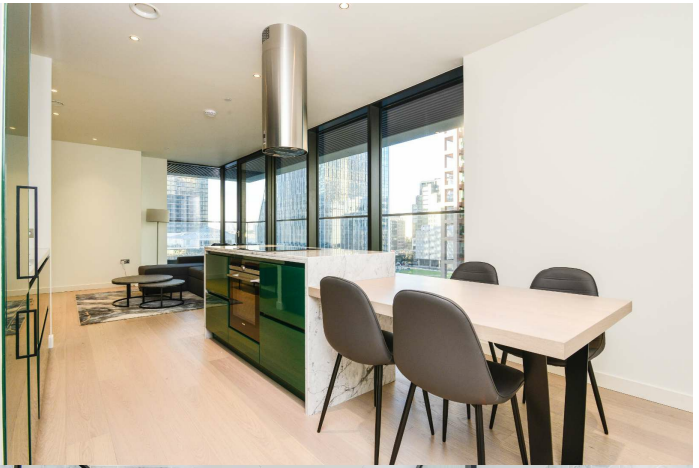
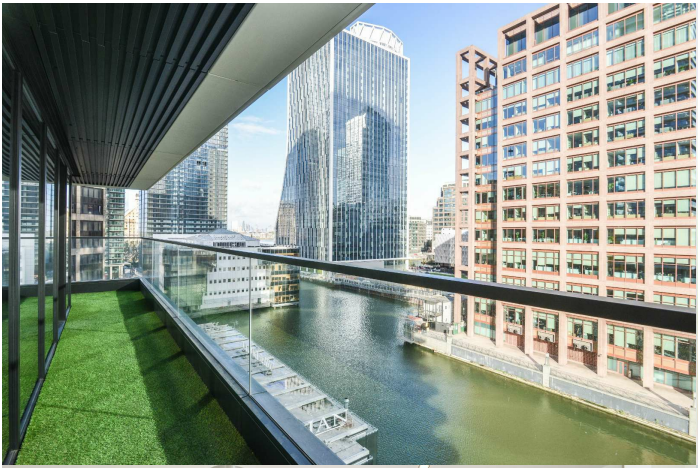
Wardian offers the ultimate in luxury for residents with incredible facilities; the developers have also created a haven of calm with plentiful greenery and outside spaces to relax.

Viewing

Please contact our Global House Estates Ltd Office on 0207 401 2020 if you wish to arrange a viewing appointment for this property or require further information.

Disclaimer

This website provides information about buying, selling, renting UK property. The information is from reliable sources, but we can't guarantee that it's always accurate. There may be mistakes or changes in the information, such as price, availability, leases, or financing. The square footage is also an estimate and should be confirmed by a professional architect or engineer.







35a St Georges Road, London,
SE1 6EW
+44 (0) 207 401 2020

<https://globalhouseestates.com>

Level 24, Lee Garden One,
33 Hysan Ave, Causeway Bay,
Hong Kong
+852 3963 8411