

0247 401 2020 | enquiries@globalhouseestates.com

FRAZIER STREET, WATERLOO, LONDON

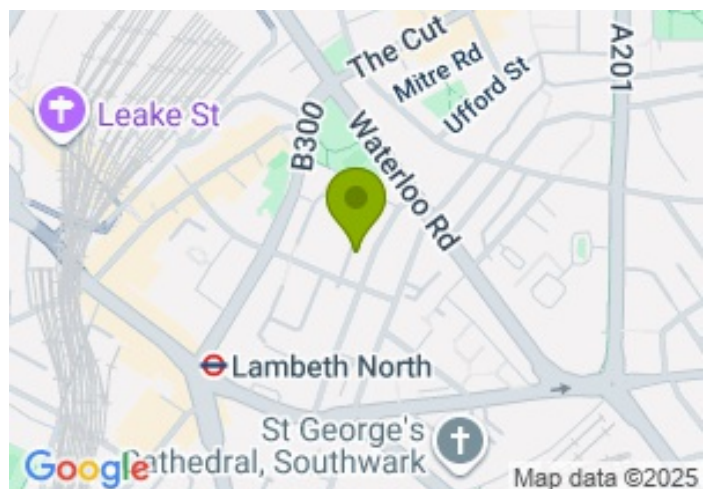
£738.50



FOR LET



- Excellent location in the centre of London
- Three double bedrooms
- Furnished
- Fitted kitchen



Property Description

This generously proportioned ex-local authority property offers an excellent opportunity to live in one of London's most central and well-connected locations. The home comprises three well-sized double bedrooms, making it ideal for professional sharers, a family, or anyone seeking additional space for a home office or guest room.

The property benefits from a bright and spacious separate lounge, a fully fitted kitchen equipped with modern appliances, and a well-maintained bathroom with a shower. Its practical layout ensures both comfort and functionality, while the furnished interiors allow for a convenient move-in with minimal effort.

Situated just a short walk from both Waterloo and Lambeth North stations, the property enjoys superb transport links, connecting you effortlessly across London. Residents will also appreciate the vibrant surroundings, with a wealth of shops, restaurants, cultural attractions, and green spaces close by, including the South Bank, the Old Vic Theatre, and the River Thames.

This property combines space, location, and convenience, making it an excellent choice for those looking to enjoy central London living.

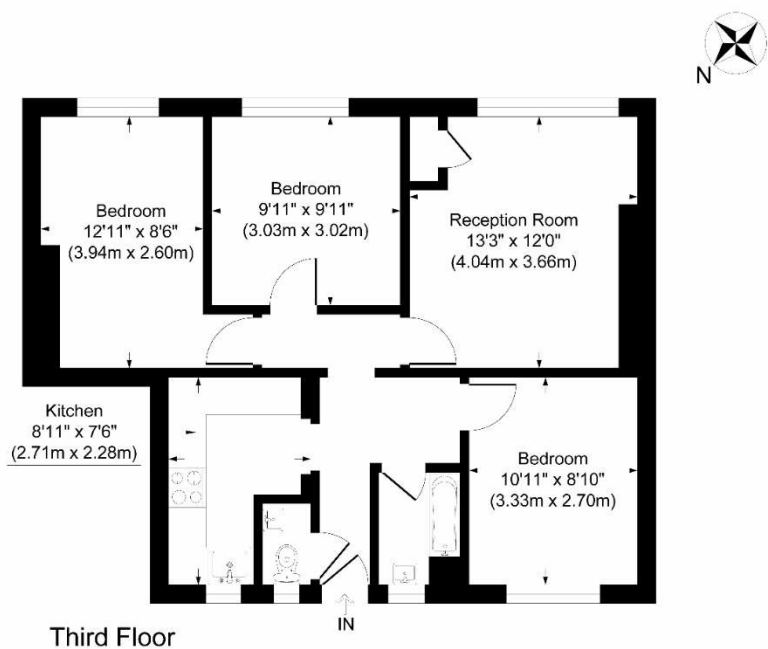
Viewing

Please contact our Global House Estates Ltd Office on 0207 401 2020 if you wish to arrange a viewing appointment for this property or require further information.

Disclaimer

This website provides information about buying, selling, renting UK property. The information is from reliable sources, but we can't guarantee that it's always accurate. There may be mistakes or changes in the information, such as price, availability, leases, or financing. The square footage is also an estimate and should be confirmed by a professional architect or engineer.

Floor plan



Greet House Frazier Street, Waterloo

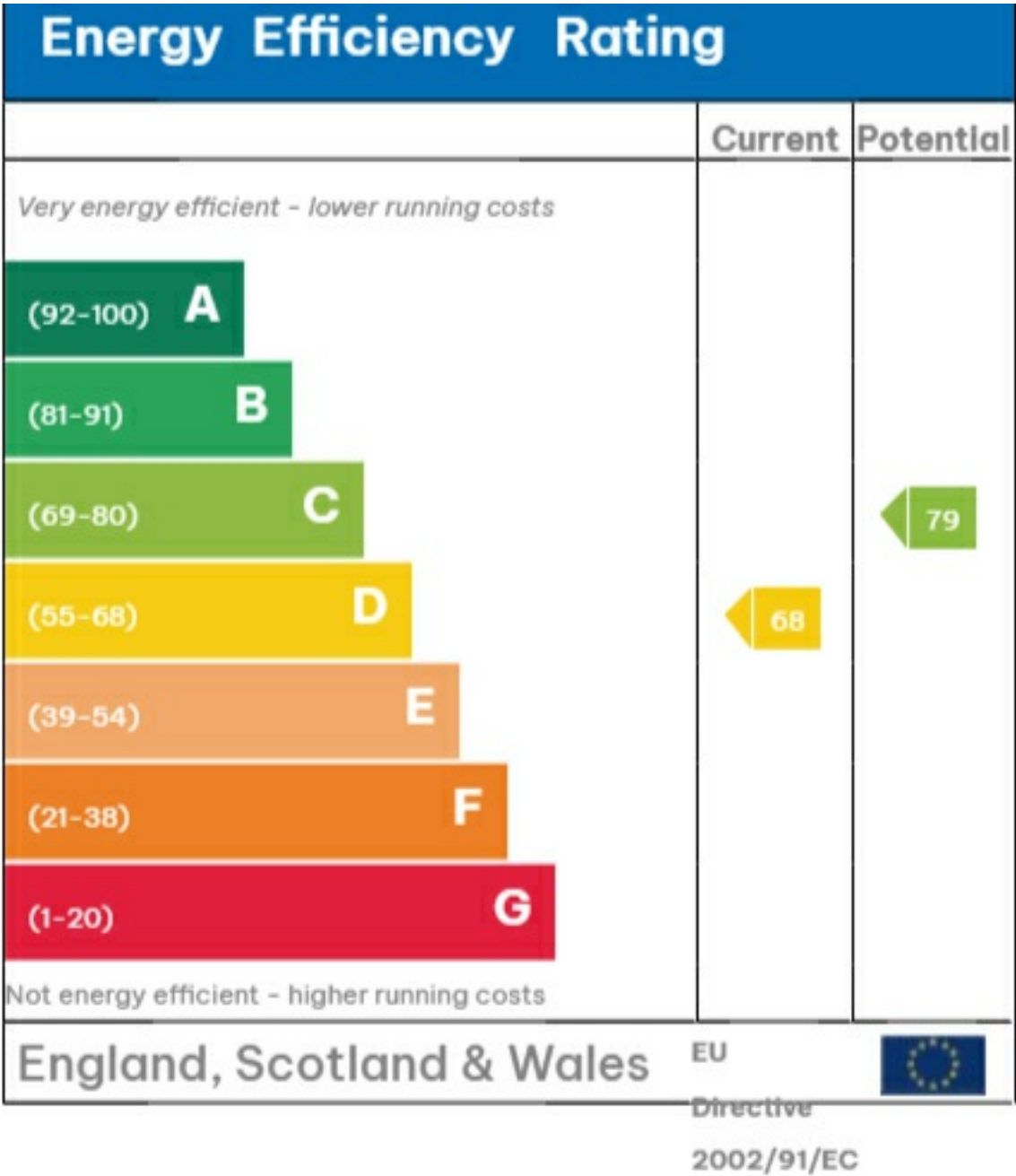
Approximate Gross Internal Area
Total = 64.9 sq m / 699 sq ft

This plan is for layout guidance only. Not drawn to scale unless stated. Windows and door openings are approximate. Whilst every care is taken in the preparation of this plan, please check all dimensions, shapes and compass bearings before making any decisions reliant upon them.

powered by:

THE360IMAGE
www.the360image.co.uk

EPC







35a St Georges Road, London,
SE1 6EW
+44 (0) 207 401 2020

<https://globalhouseestates.com>

Level 24, Lee Garden One,
33 Hysan Ave, Causeway Bay,
Hong Kong
+852 3963 8411