

0247 401 2020 | enquiries@globalhouseestates.com

20 GOODLUCK HOPE WALK, CANNING TOWN, LONDON

£807.70



FOR LET



- Two bedroom, brand new 23rd floor apartment
- Two bathrooms
- Amazing views and over 1000 sq. ft of living space
- 29th floor residents room (for use by Douglas Tower residents)
- Resident facilities, include: 24 hour concierge, swimming pools, gym, work spaces and cinema room.
- Luxury furniture pack supplied



Property Description

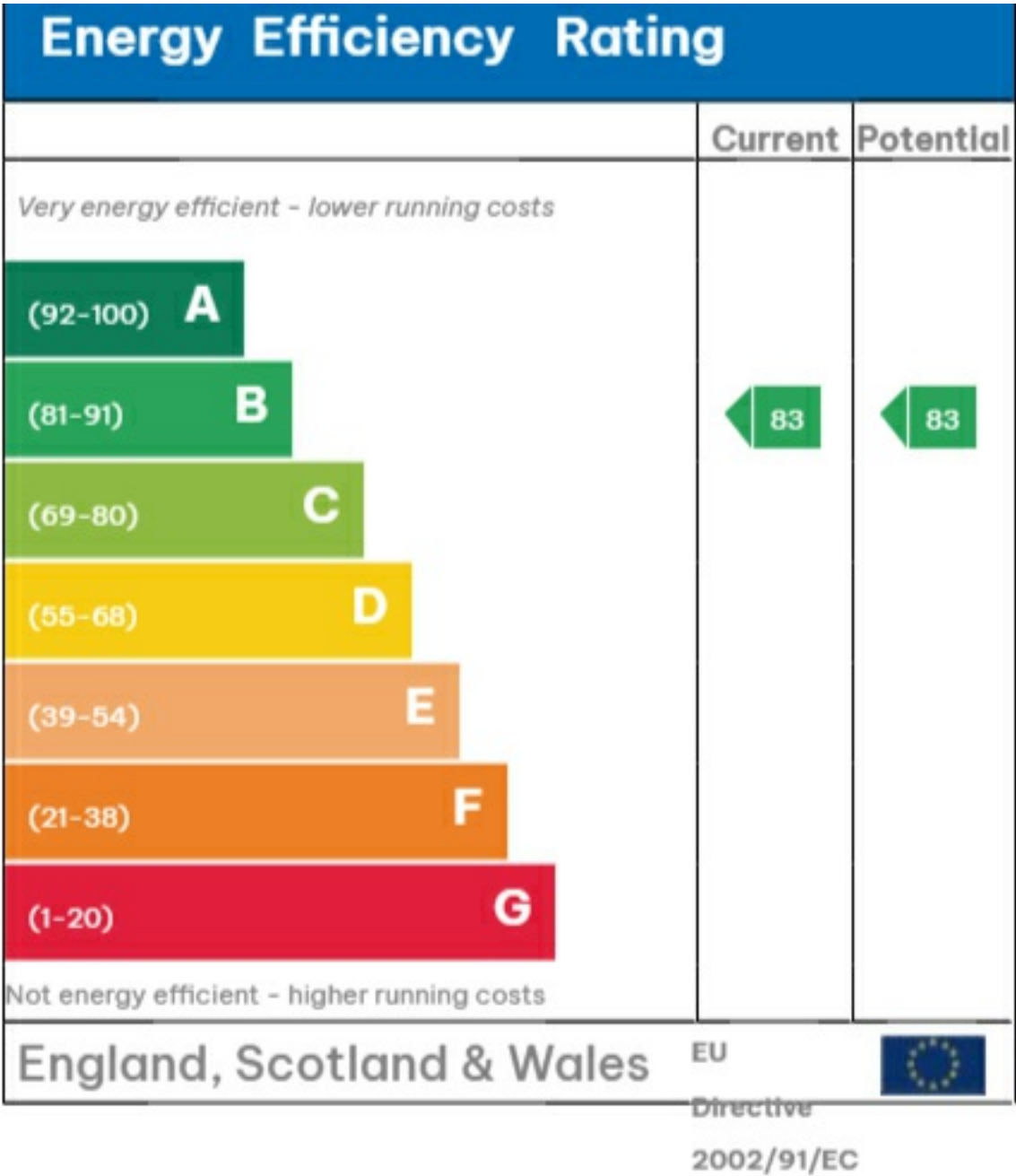
An amazing 23rd floor, incredibly spacious two double bedroom apartment within the premium tower in Goodluck Hope - Douglas Tower. The property offers far reaching views to Canary Wharf, the Leamouth Peninsular and down the River Thames. The apartment has a enormous, light filled living space with a fully integrated kitchen, open plan to the huge reception room with winter garden. There is a luxury bathroom and an ensuite shower room to the principal bedroom. Douglas Tower has a 29th floor residents room and terrace with spectacular views; residents will also enjoy the benefit of outstanding facilities, including an indoor and outdoor swimming pool - overlooking the Thames, state of art gym, work out room, resident work spaces and cinema room. Good Luck Hope is a fantastic place to live!

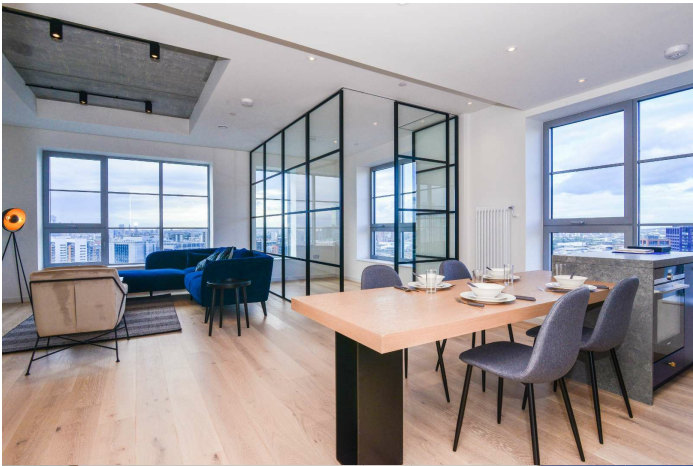
Viewing

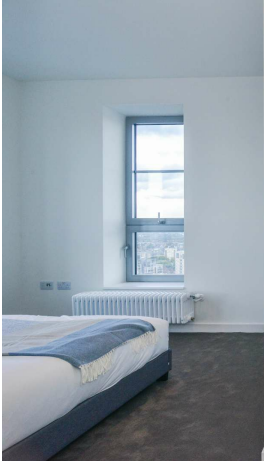
Please contact our Global House Estates Ltd Office on 0207 401 2020 if you wish to arrange a viewing appointment for this property or require further information.

Disclaimer

This website provides information about buying, selling, renting UK property. The information is from reliable sources, but we can't guarantee that it's always accurate. There may be mistakes or changes in the information, such as price, availability, leases, or financing. The square footage is also an estimate and should be confirmed by a professional architect or engineer.









35a St Georges Road, London,
SE1 6EW
+44 (0) 207 401 2020

<https://globalhouseestates.com>

Level 24, Lee Garden One,
33 Hysan Ave, Causeway Bay,
Hong Kong
+852 3963 8411