

0247 401 2020 | enquiries@globalhouseestates.com

SUN STREET, MOORGATE, LONDON

£807.00



FOR LET



- Modern, one bedroom westerly facing apartment
- Luxury new development in the heart of the City
- 10th floor apartment
- Residents gym, cinema room, work hub, terrace, dining and more!
- Oak herringbone flooring
- Winter garden



Propety Description

A stunning, 10th floor apartment within this modern development in the City. The building and apartments have been meticulously designed with industrial elements and offer superb, luxury living in this incredible location. The development itself offers an array of residents facilities on the 7th floor including: a residents room , work hub, meeting rooms, cinema room, gymnasium, sensory room, residents dining and residents terrace. The apartment itself is equally impressive with a favourable westerly facing aspect, oak herringbone flooring, a beautifully fitted, integral kitchen with breakfast bar, spacious reception room, winter garden, luxury bathroom and a well proportioned bedroom with ample wardrobe space. There is excellent storage throughout the apartment, underfloor heating and the interior is thoughtfully and stylishly designed. The apartment comes complete with luxury furnishings.

You are located near to Liverpool Street, Shoreditch, Old Street and the City with fantastic eateries, bars, boutiques and restaurants to explore. The rest of London and beyond is easily accessible from Liverpool Street Station, just a few minutes walk away.

Viewing

Please contact our Global House Estates Ltd Office on 0207 401 2020 if you wish to arrange a viewing appointment for this property or require further information.

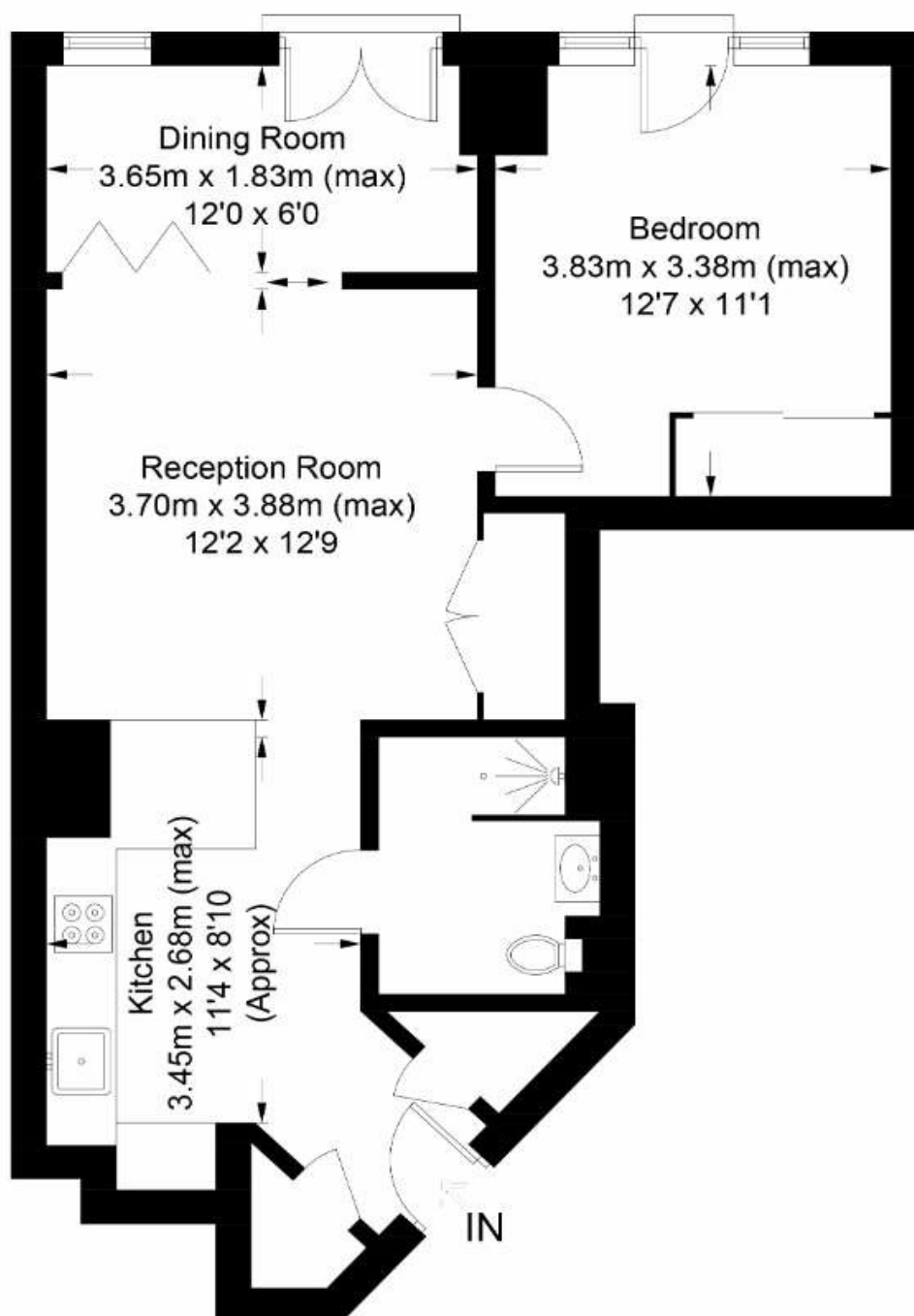
Disclaimer

This website provides information about buying, selling, renting UK property. The information is from reliable sources, but we can't guarantee that it's always accurate. There may be mistakes or changes in the information, such as price, availability, leases, or financing. The square footage is also an estimate and should be confirmed by a professional architect or engineer.

Floor plan

One Crown Plaza, EC2

Approximate Gross Internal Area = 56.7 sq m / 610 sq ft



Tenth Floor

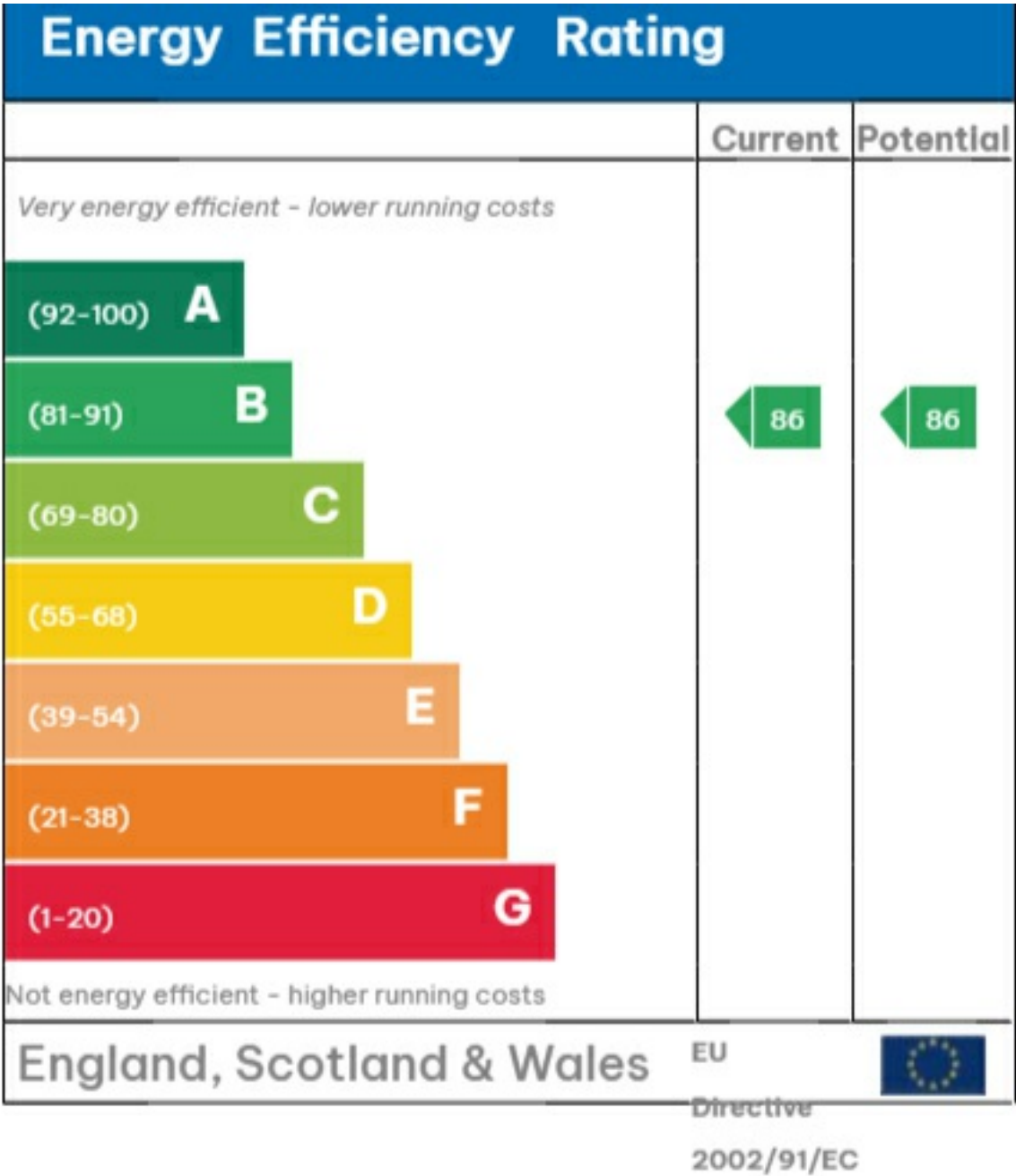
This floor plan is for representation purposes only and is not drawn to scale.

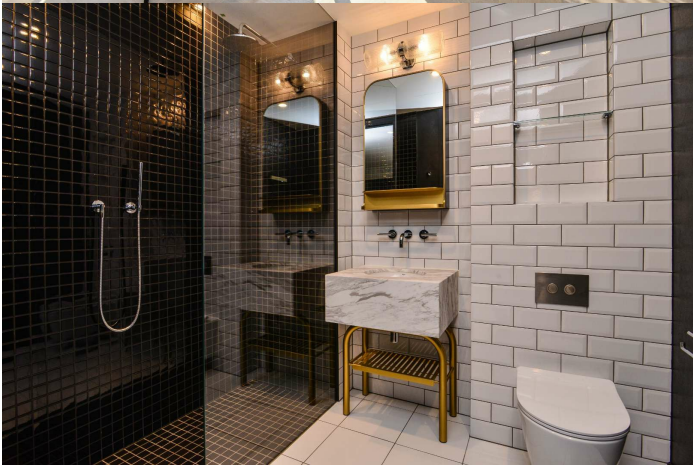
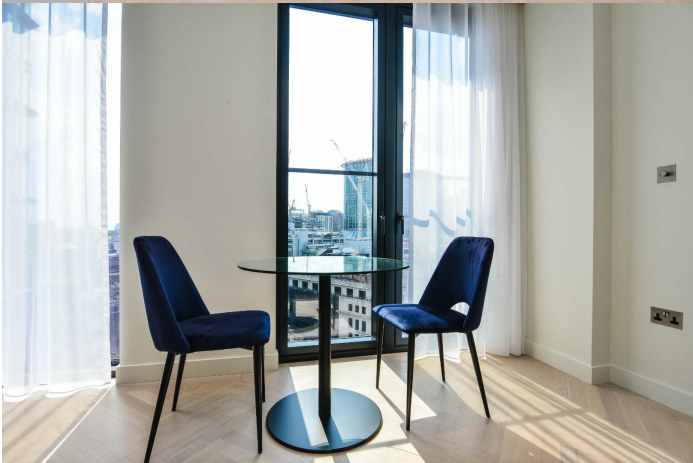
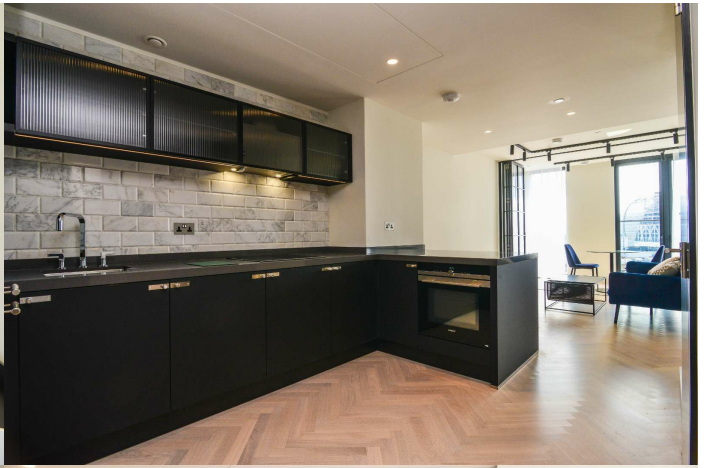
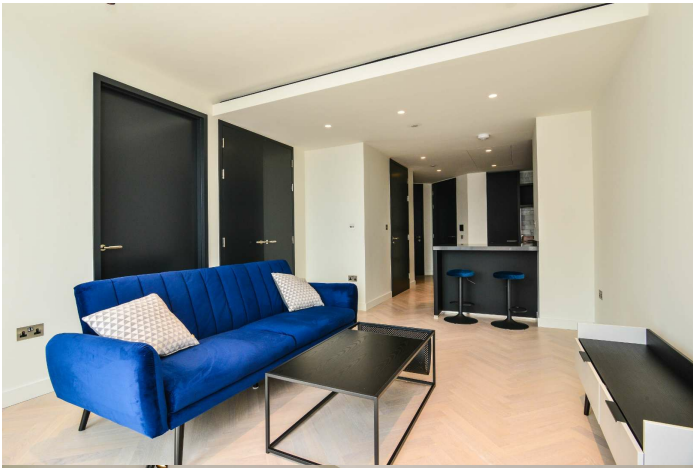
The Gross Internal Area includes outbuildings shown on the plan.

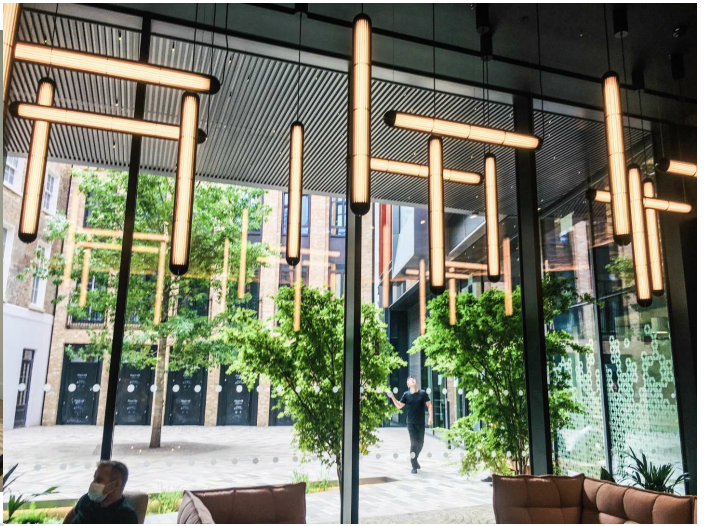
Whilst every attempt has been made to ensure the accuracy of the plan measurements of doors, windows and rooms are approximate only and should be checked before making any decisions reliant upon them.

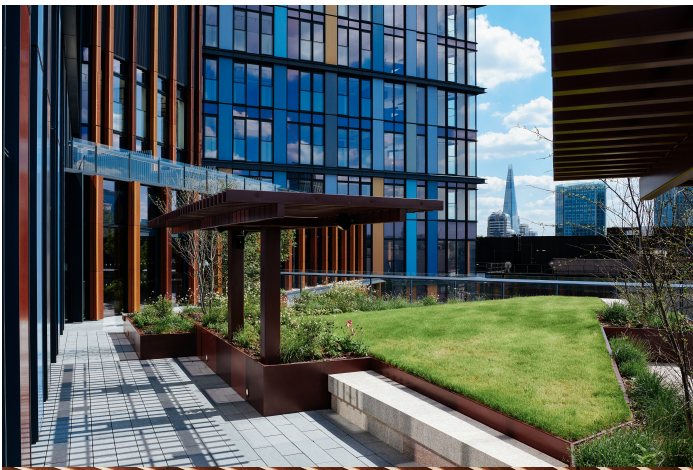
Copyright Bespokeplans.co.uk (ID776481)

EPC









35a St Georges Road, London,
SE1 6EW
+44 (0) 207 401 2020

<https://globalhouseestates.com>

Level 24, Lee Garden One,
33 Hysan Ave, Causeway Bay,
Hong Kong
+852 3963 8411