

0247 401 2020 | [enquiries@globalhouseestates.com](mailto:enquiries@globalhouseestates.com)

## NORTHILL APARTMENT, SALFORD, MANCHESTER

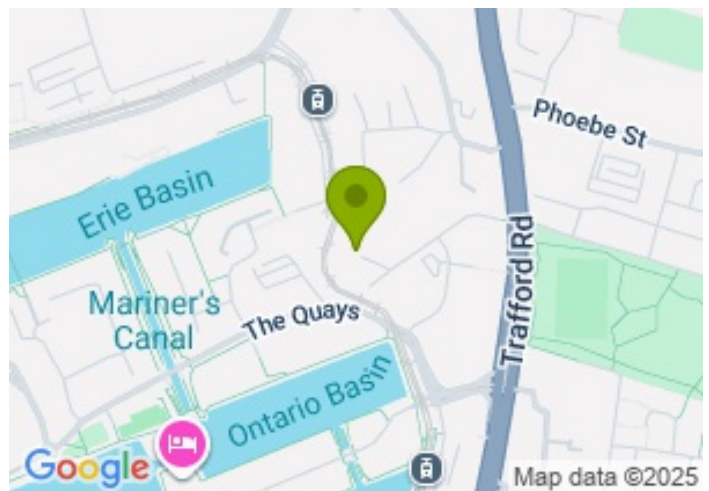
£1,300.00



FOR LET



- Spacious 2 bedroom apartment / unfurnished
- Available from 10Oct25
- Luxury apartments close to Manchester city centre
- Stunning views of Salford's waterfront from the apartment
- Direct public transport network directly to Manchester city centre
- 5 minutes walk to Salford Quays Metrolink Station



## Property Description

GHE is please to introduce this apartment which was meticulously designed to the highest possible standard, providing residents with a modern living experience.

This stunning two double bedroom, two bathroom apartment overlooking Media City. Located minutes away from Metrolink and within walking distance to MediaCityUk.

Northhill Apartments are a fantastic addition to this thriving area, which includes MediaCityUK, an iconic modern hub which is home to world-class corporations such as BBC and ITV studios and is at the forefront of the digital economy. Overlooking MediaCityUK, Old Trafford and more iconic landmarks this apartment offers only the best views.

The growing number of shops, bars and restaurants means that it is favoured by young professionals, mature students and families.

This apartment features a large open plan living/kitchen/dining area with modern fitted kitchen and built in fridge freezer, dishwasher and a free standing washing machine. The apartment has a beautiful panorama across the Quays and MediaCityUk.

Please contact GHE to book a viewing!

## Viewing

Please contact our Global House Estates Ltd Office on 0207 401 2020 if you wish to arrange a viewing appointment for this property or require further information.

## Disclaimer

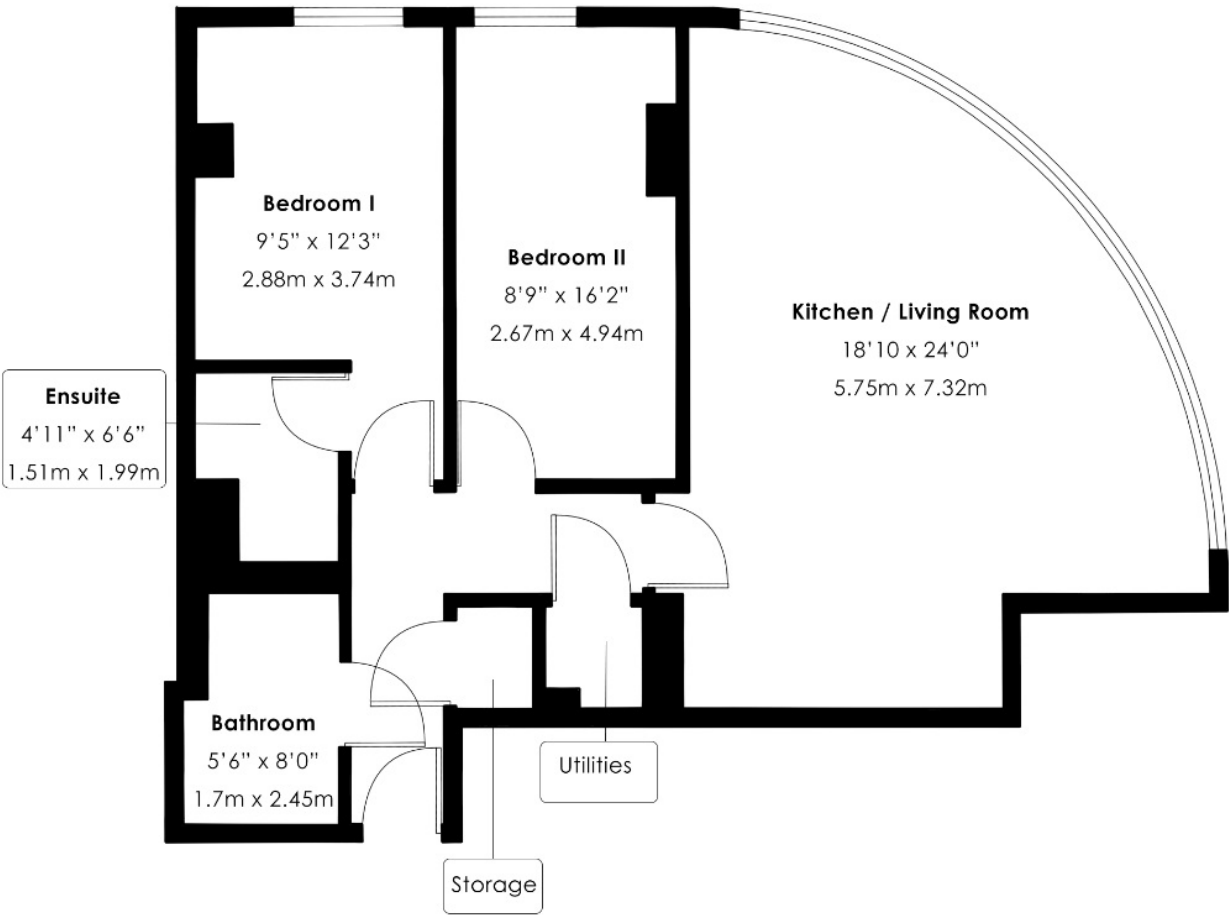
This website provides information about buying, selling, renting UK property. The information is from reliable sources, but we can't guarantee that it's always accurate. There may be mistakes or changes in the information, such as price, availability, leases, or financing. The square footage is also an estimate and should be confirmed by a professional architect or engineer.



# Floor plan

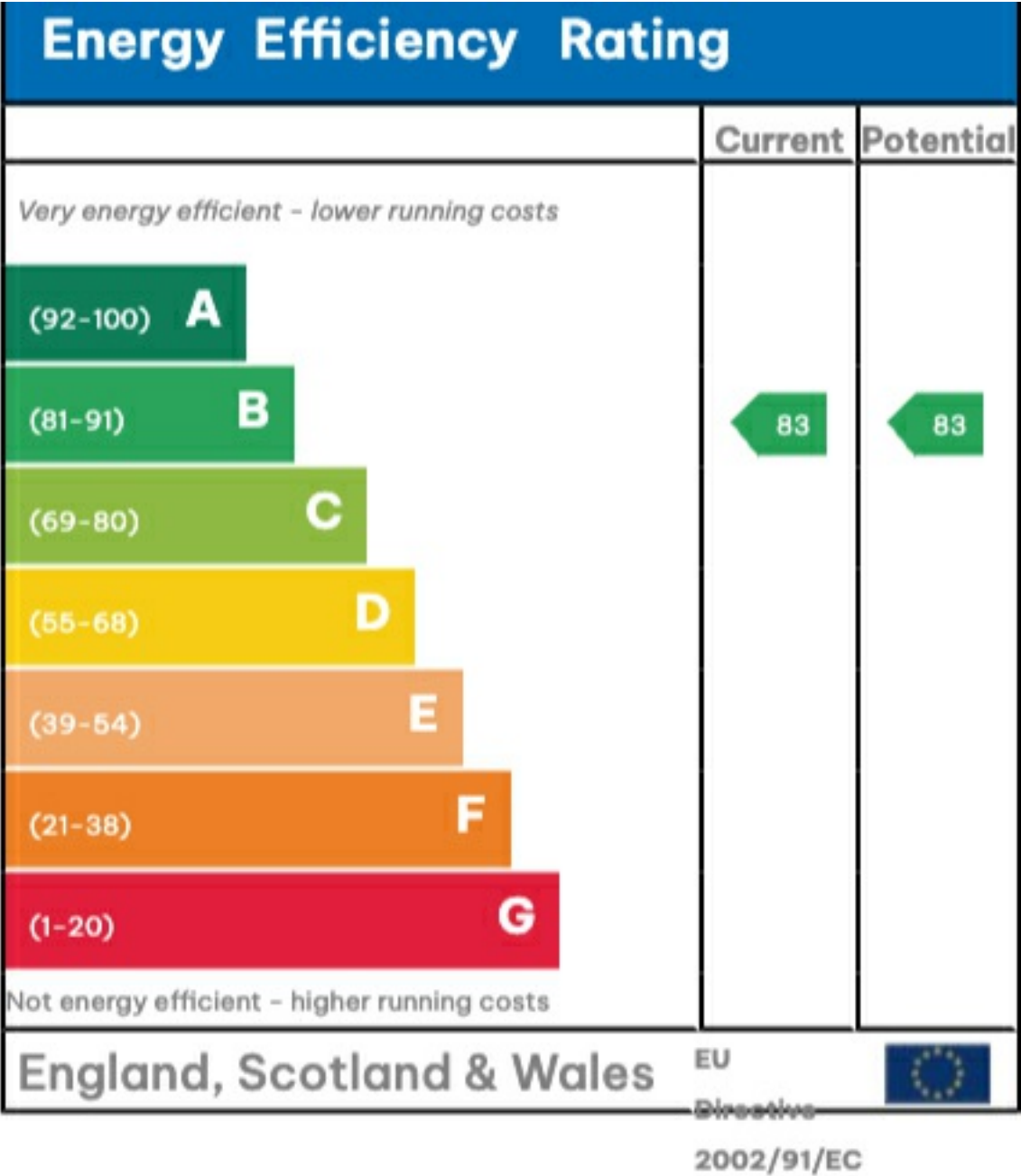
Approx. Total Area

786 ft<sup>2</sup>/ 73 m<sup>2</sup>



This floor plan is for illustrative purposes only. It is not drawn to scale. Any measurements, floor areas (including any total floor area), openings and orientation are approximate. No details are guaranteed, they cannot be relied upon for any purpose and they do not form part of any agreement. No liability is taken for any error, omission or misstatement. A party must rely upon its own inspection(s).

EPC













35a St Georges Road, London,  
SE1 6EW  
+44 (0) 207 401 2020

<https://globalhouseestates.com>

Level 24, Lee Garden One,  
33 Hysan Ave, Causeway Bay,  
Hong Kong  
+852 3963 8411