

0247 401 2020 | enquiries@globalhouseestates.com

PARKVIEW, MANCHESTER, UK

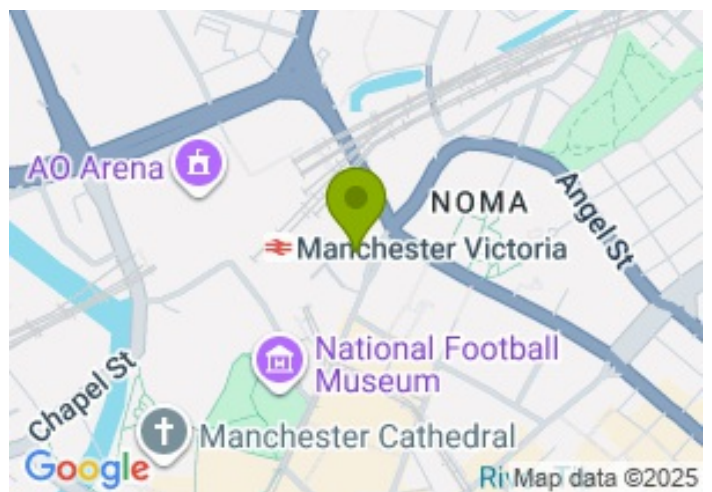
£1,600.00



FOR LET



- Full furnished 2 bedroom apartment
- Corner Aspect with waterside views
- 24/7 Concierge
- Gym & Yoga Studio
- Co-Working Areas, Bar & Lounge
- Landscaped Gardens
- Located close to Victoria Station
- Available now!



Property Description

* Brand New* GHE is proud to introduce this stunning two bedroom apartment features high specifications and open-plan living areas. The apartment offers views over the new City River Park and the River Irk as well as the City Centre skyline and are near numerous transport links into or out of the city.

The fully furnished two bedroom apartment boasts floor to ceiling windows ensuring plenty of natural light into substantial open plan living and dining areas. The kitchen equipped with modern integrated electric appliances. Two spacious double bedrooms, ideal for a small family, young professionals or students and one of which includes an en-suite bathroom.

Located to the North of the City Centre, between Green Quarter and Ancoats; the development benefits from great accessibility to the commercial district of NOMA and the trendy Northern Quarter, as well as the green spaces and peaceful neighbourhoods the area has to offer.

Victoria Riverside is located near a plethora of amenities, restaurants and facilities. Being just minutes from the city centre, this property is situated in an extremely convenient and desirable area. There is an abundance of nearby schools, GP's and other amenities nearby, making it highly desirable by tenants.

Please contact GHE to book a viewing!

All data and information set forth on this website regarding real property, for sale, purchase, rental and/or financing, are from sources regarded as reliable. No warranties are made as to the accuracy of any descriptions and/or other details and such information is subject to errors, omissions, changes of price, tenancies, commissions, prior sales, leases or financing, or withdrawal without notice. Square footages are approximate and may be verified by consulting a professional architect or engineer.

Viewing

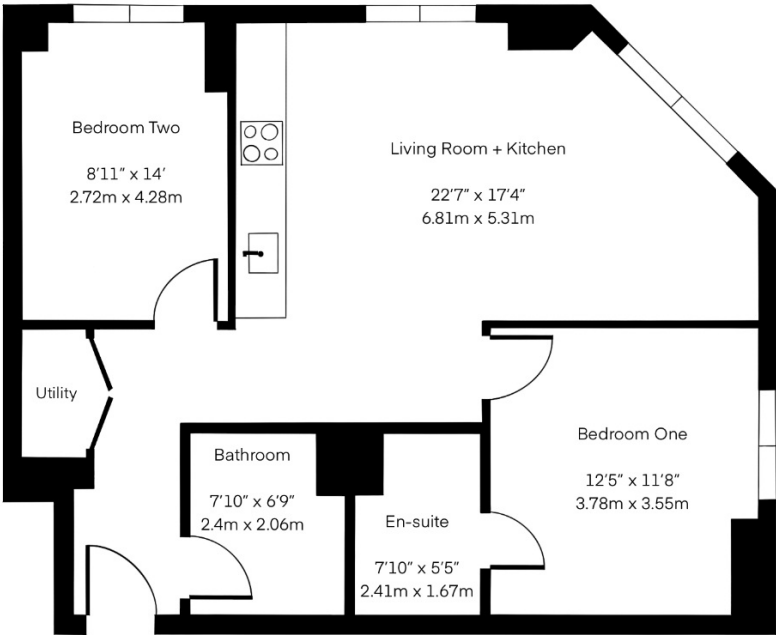
Please contact our Global House Estates Ltd Office on 0207 401 2020 if you wish to arrange a viewing appointment for this property or require further information.

Disclaimer

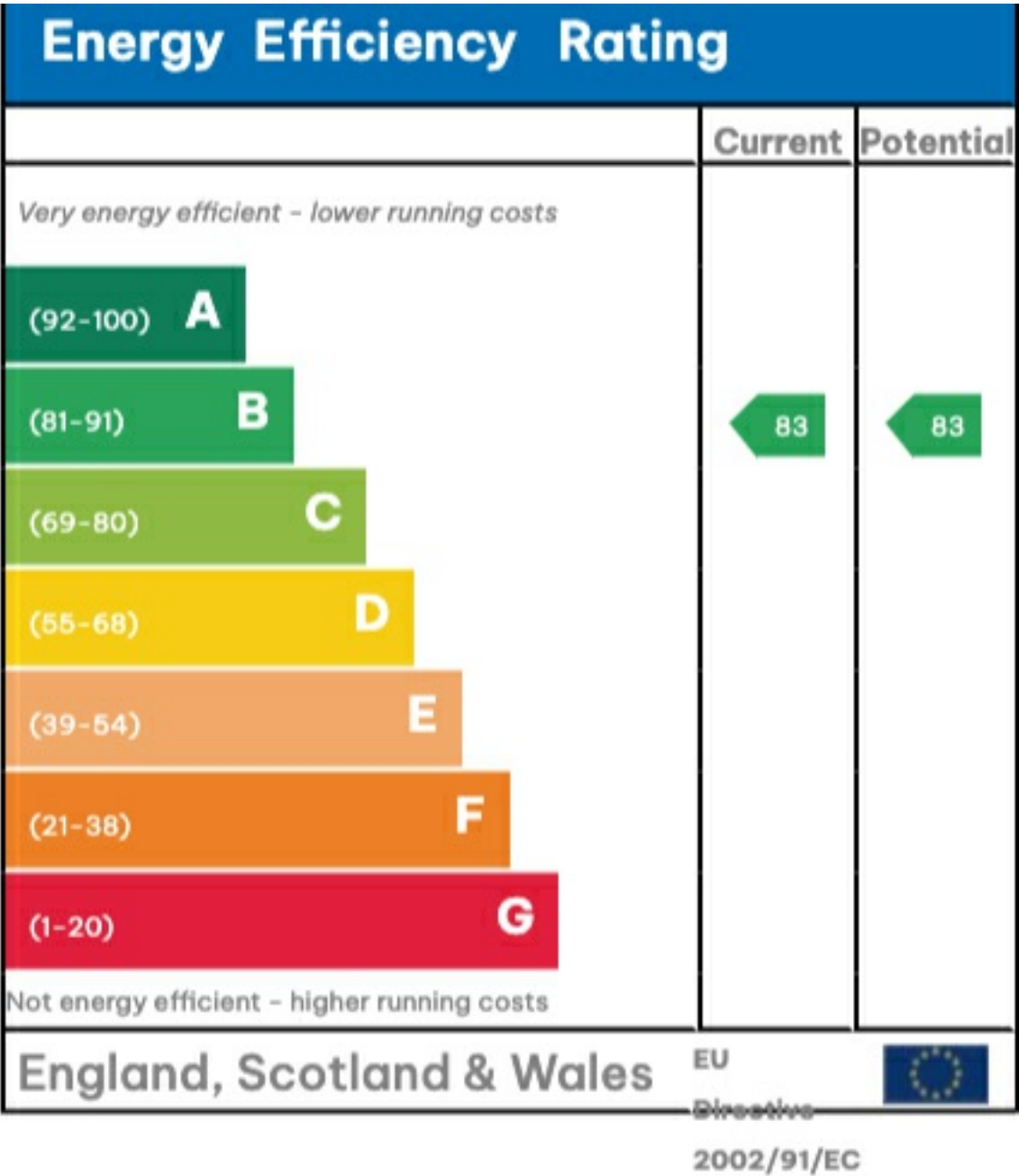
This website provides information about buying, selling, renting UK property. The information is from reliable sources, but we can't guarantee that it's always accurate. There may be mistakes or changes in the information, such as price, availability, leases, or financing. The square footage is also an estimate and should be confirmed by a professional architect or engineer.

Floor plan

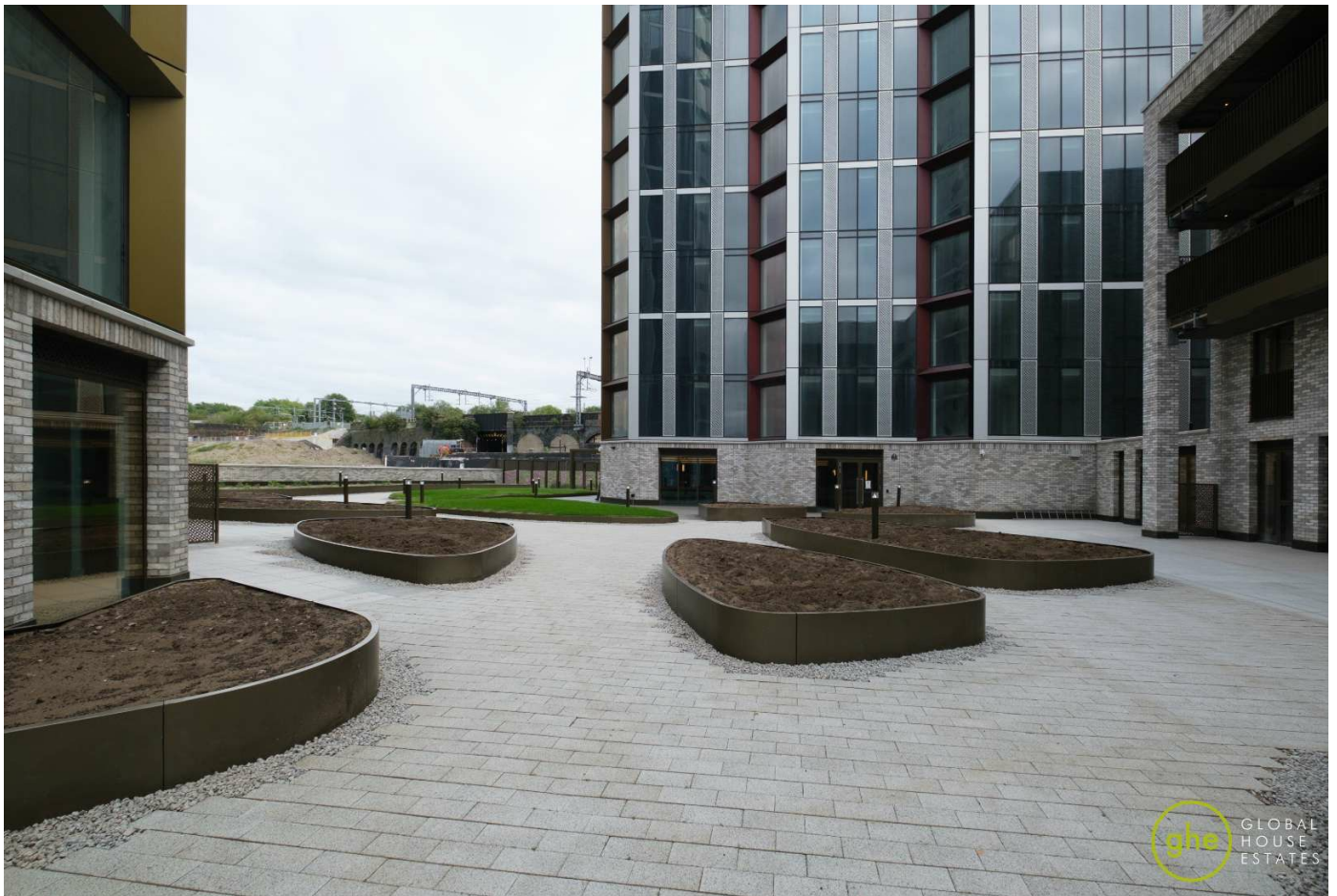
Approx. Total Area
775 sqft / 72 sqm



This floor plan is illustrative purposes only. It is not drawn to scale. Any measurements, floor areas (including any total floor area), openings and orientation are approximate. No details are guaranteed, they cannot be relied upon for any purpose and they do not form part of any agreement. No liability is taken for any error, omission or misstatement. A party must reply upon its own inspection(s).







35a St Georges Road, London,
SE1 6EW
+44 (0) 207 401 2020

<https://globalhouseestates.com>

Level 24, Lee Garden One,
33 Hysan Ave, Causeway Bay,
Hong Kong
+852 3963 8411