

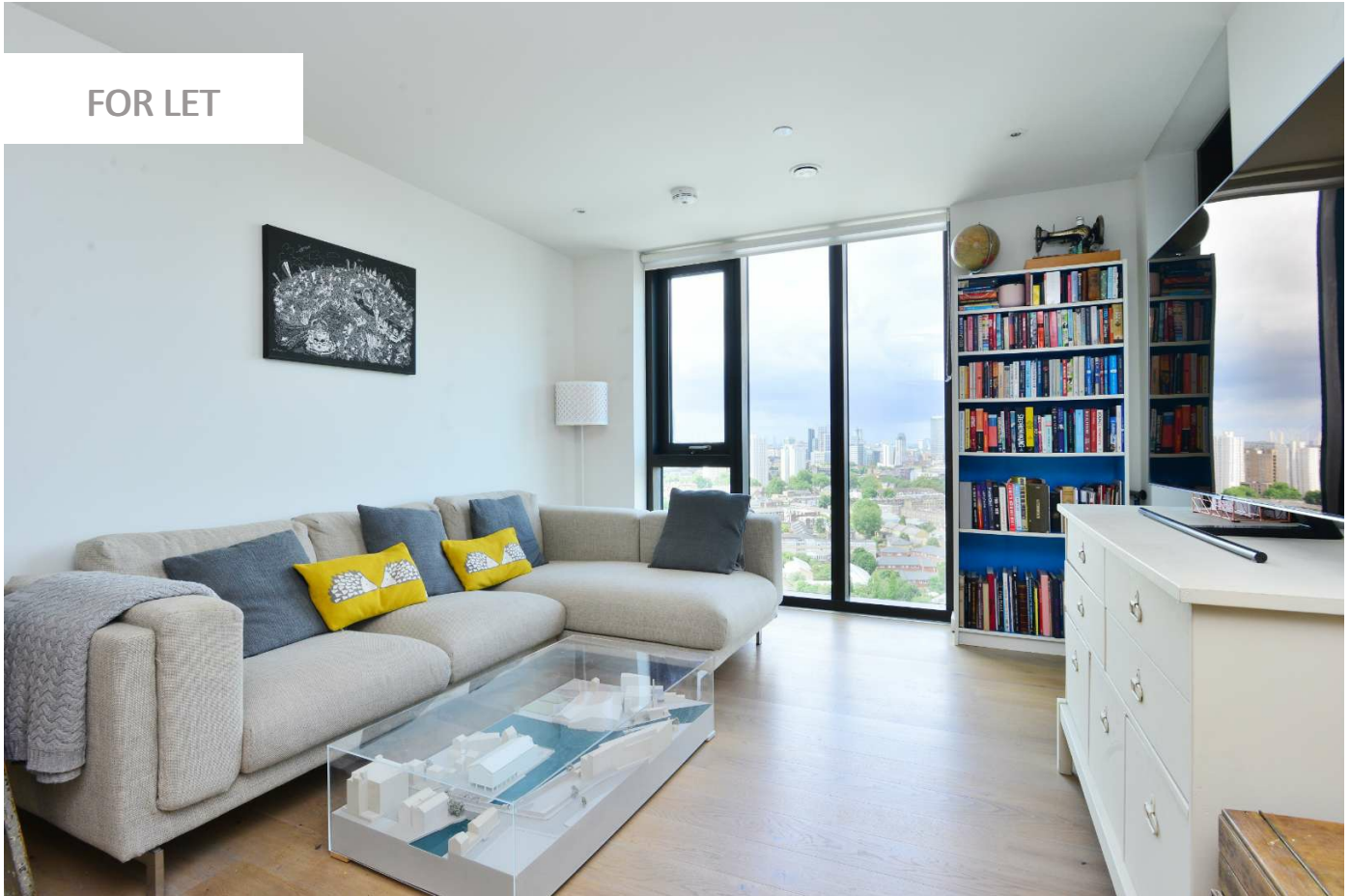
0247 401 2020 | enquiries@globalhouseestates.com

1 ST GABRIEL'S WALK, ELEPHANT AND CASTLE, LONDON

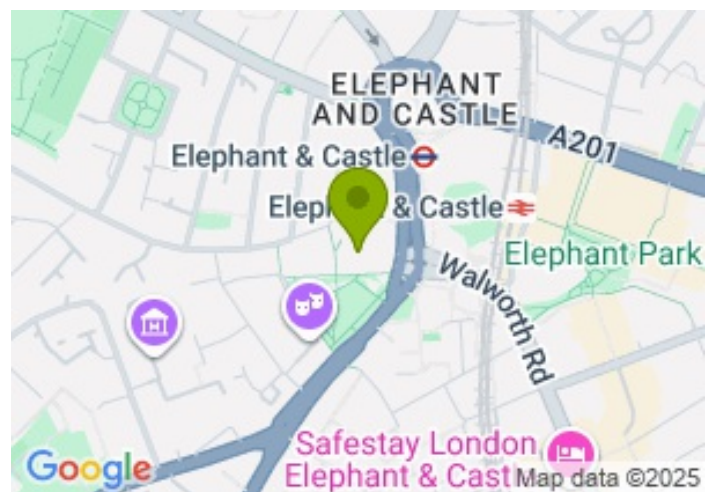
£600.00



FOR LET



- Stunning Views to Central London
- Elephant and Castle tube on door step
- One bedroom fully furnished apartment
- 24h Concierge service
- Communal garden



Property Description

A one bedroom, one bathroom apartment on the 15th floor of One The Elephant, an iconic tower rising 37 floors above Elephant & Castle.

The apartment includes an open plan living space, fitted kitchen with integrated appliances, wood flooring, modern bathroom décor, fitted wardrobe space in the bedroom and a private balcony offering views across the surround area.

On-site facilities include a 24 hour concierge service, residents' lounge, a 'green roof' for growing produce and a communal reading garden.

The apartment is located a short distance from the centre of Elephant and Castle which has an excellent variety of high street shops and restaurants. London College of Communication is next door. The development is close to Elephant and Castle National Rail and Underground stations, providing the Thameslink, Southeastern, Bakerloo and Northern Line services.

Viewing

Please contact our Global House Estates Ltd Office on 0207 401 2020 if you wish to arrange a viewing appointment for this property or require further information.

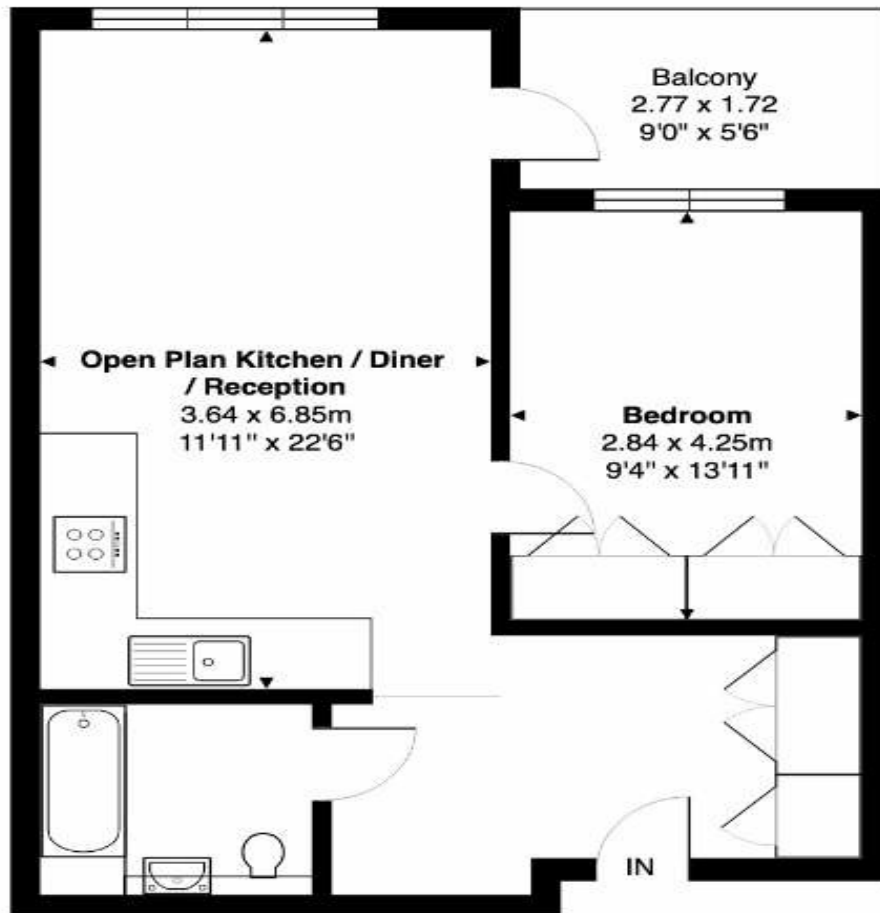
Disclaimer

This website provides information about buying, selling, renting UK property. The information is from reliable sources, but we can't guarantee that it's always accurate. There may be mistakes or changes in the information, such as price, availability, leases, or financing. The square footage is also an estimate and should be confirmed by a professional architect or engineer.

Floor plan

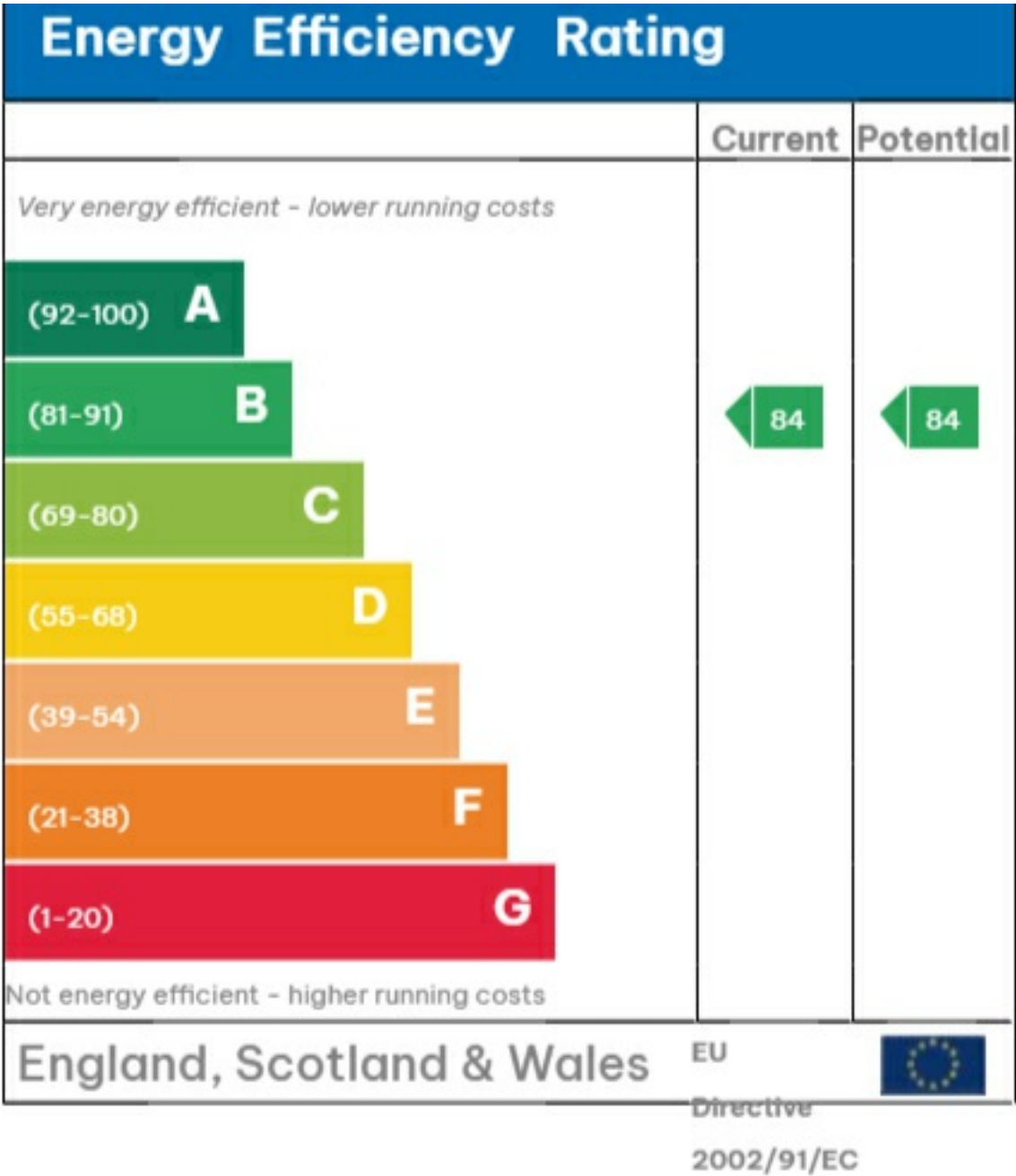
1 St Gabriels Walk, SE1

Total Area: 53.1 m² ... 571 ft²



Seventeenth Floor

This plan is for layout guidance only. Drawn in accordance with RICS guidelines.
Not drawn to scale unless stated.







35a St Georges Road, London,
SE1 6EW
+44 (0) 207 401 2020

<https://globalhouseestates.com>

Level 24, Lee Garden One,
33 Hysan Ave, Causeway Bay,
Hong Kong
+852 3963 8411