

0247 401 2020 | [enquiries@globalhouseestates.com](mailto:enquiries@globalhouseestates.com)

## 4 WHARF END, TRAFFORD PARK, MANCHESTER

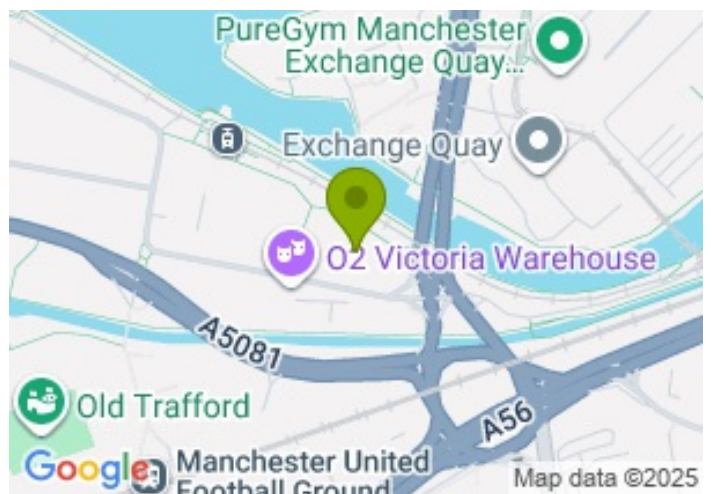
£1,350.00



FOR LET



- Two double bedrooms
- 24 hours concierge
- Views over Salford Quay and beyond
- Residents terraces
- Residents cinema room and workspaces



## Property Description

Stunning two double bedroom and two bathroom apartment in an idyllic waterside position, situated just minutes away from Salford Quays & Media City.

The Apartment boasts floor to ceiling windows ensuring plenty of natural light into the substantial open plan kitchen/living space and both bedrooms. The contemporary fitted kitchen contains all the integrated appliances you need including; washing machine, fridge/freezer, dishwasher, hob & oven. Two fully-tiled bathroom suites offer high-quality sanitary ware and heated towel rails.

This superb property has been completed to a high specification with a contemporary design throughout and benefitting from a range of luxury facilities. These include: 9-Seater Cinema Lounge, Private Dining Room, co-working spaces and a two roof terraces, on the 14th & 17th floors, with views across both Salford Quays and towards Manchester City Centre.

The building provides ease of access to the City Centre and beyond, with Wharfside Metrolink station on its doorstep!

Please contact GHE to book a viewing!

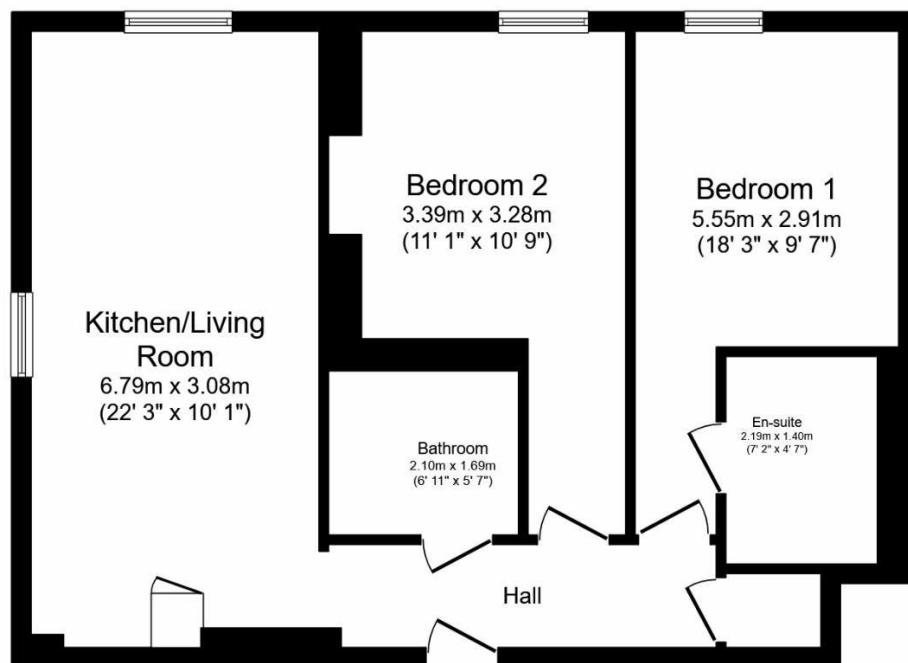
## Viewing

Please contact our Global House Estates Ltd Office on 0207 401 2020 if you wish to arrange a viewing appointment for this property or require further information.

## Disclaimer

This website provides information about buying, selling, renting UK property. The information is from reliable sources, but we can't guarantee that it's always accurate. There may be mistakes or changes in the information, such as price, availability, leases, or financing. The square footage is also an estimate and should be confirmed by a professional architect or engineer.

# Floor plan

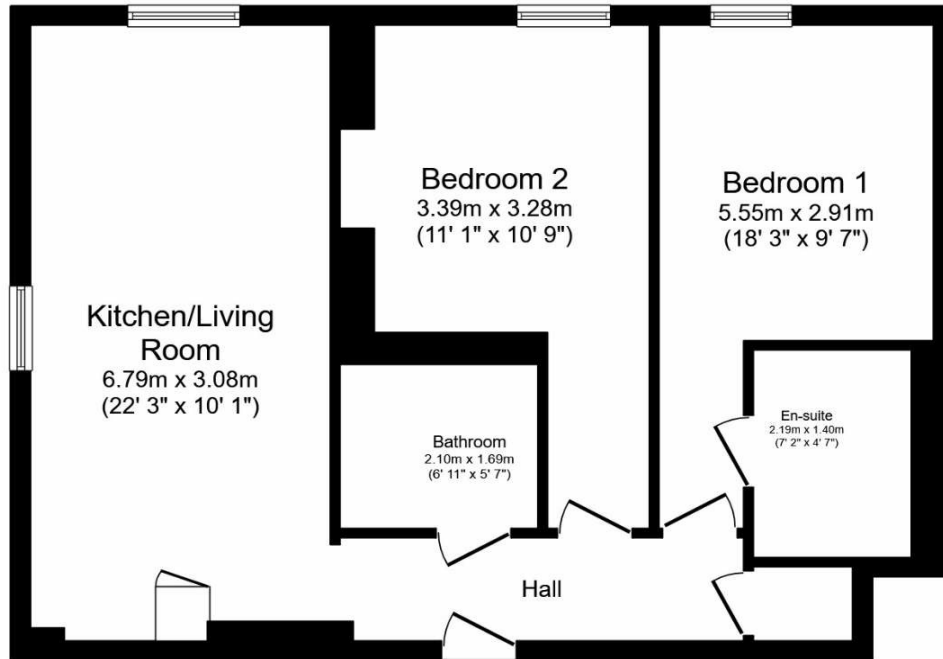
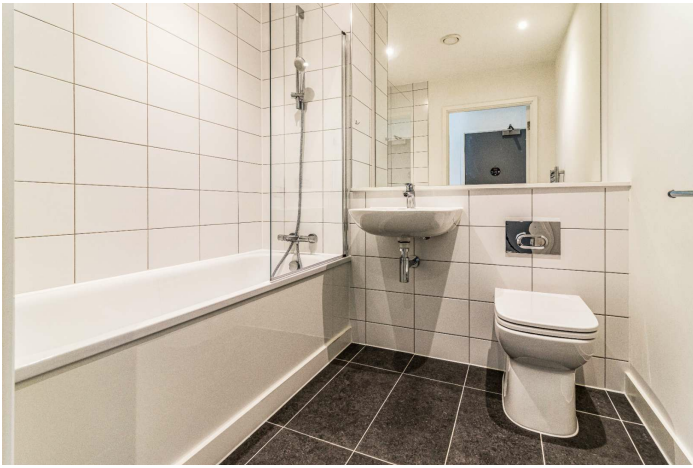


Total floor area 64.2 sq.m. (691 sq.ft.) approx

This floor plan is for illustrative purposes only. It is not drawn to scale. Any measurements, floor areas (including any total floor area), openings and orientation are approximate. No details are guaranteed, they cannot be relied upon for any purpose and they do not form part of any agreement. No liability is taken for any error, omission or misstatement. A party must rely upon its own inspection(s).  
Powered by [www.focalagent.com](http://www.focalagent.com)







Total floor area 64.2 sq.m. (691 sq.ft.) approx

This floor plan is for illustrative purposes only. It is not drawn to scale. Any measurements, floor areas (including any total floor area), openings and orientation are approximate. No details are guaranteed, they cannot be relied upon for any purpose and they do not form part of any agreement. No liability is taken for any error, omission or misstatement. A party must rely upon its own inspection(s).  
Powered by [www.focalagent.com](http://www.focalagent.com)