

0247 401 2020 | enquiries@globalhouseestates.com

91 SIDNEY STREET, WHITECHAPEL, LONDON

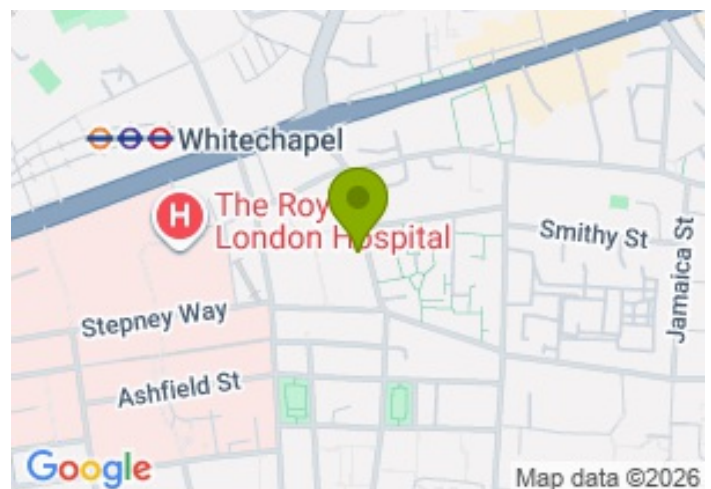
£4,500.00



FOR LET



- Stunning three double bedroom apartment
- Three bathrooms
- Modern development by Mount Anvil
- Two private terraces
- Residents gym and cinema room
- Close to Whitechapel and Aldgate
- 24 hour concierge



Property Description

A modern, stunning and incredibly spacious three double bedroom, three bathroom apartment within this superb development by renowned London developers Mount Anvil. The apartment offers two private terraces, a 23ft reception room with stylish porcelain tiled floor, integrated oak effect kitchen with all the appliances you would need including a wine cooler. The three bedrooms are all very well proportioned, two have en suite shower rooms and all have direct access to a terrace. Additional benefits include a superb residents gym, private cinema room, and concierge. Whitechapel Underground Station is just a few minutes walk and you are well served by local amenities, restaurants and cafes nearby.

Viewing

Please contact our Global House Estates Ltd Office on 0207 401 2020 if you wish to arrange a viewing appointment for this property or require further information.

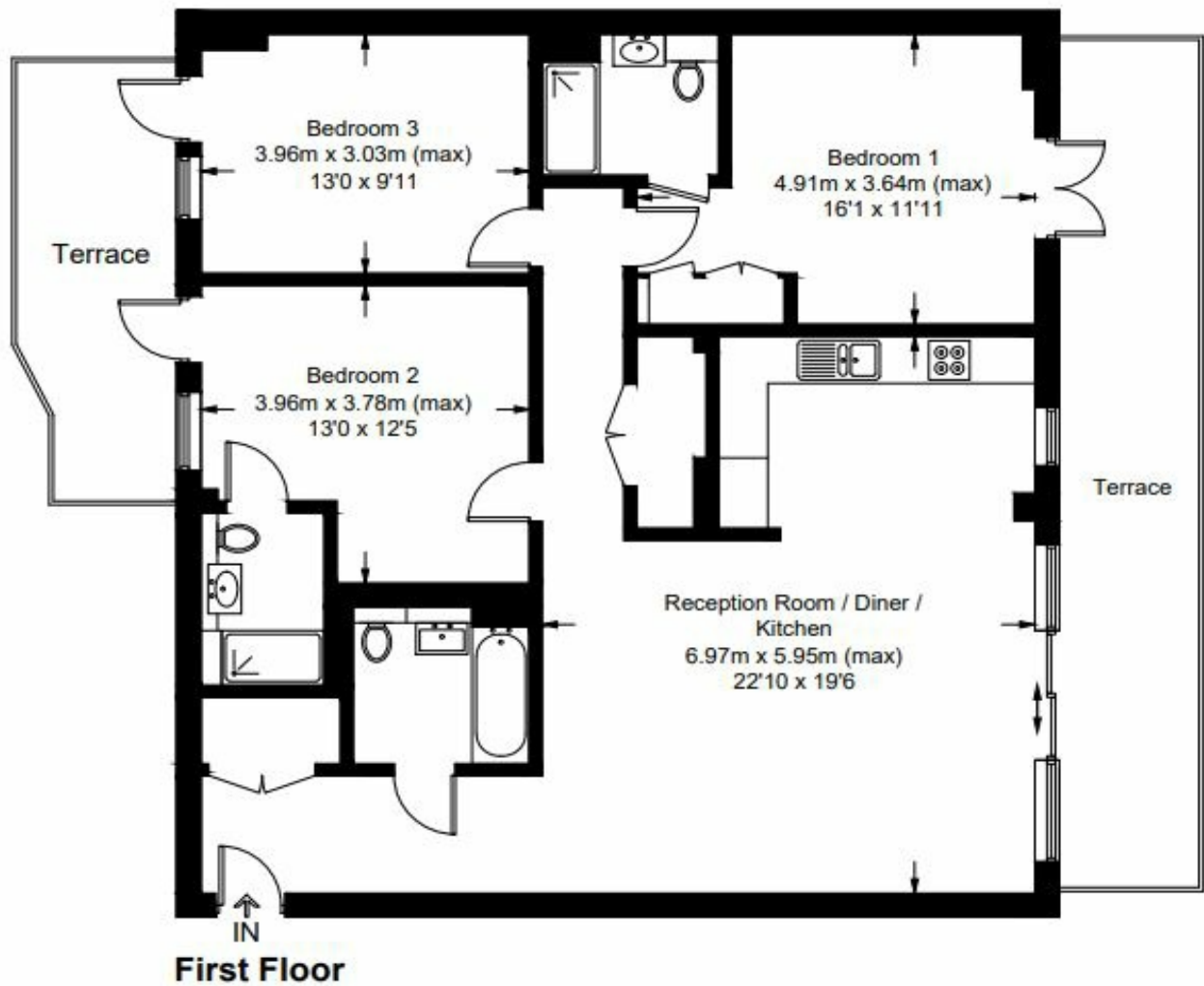
Disclaimer

This website provides information about buying, selling, renting UK property. The information is from reliable sources, but we can't guarantee that it's always accurate. There may be mistakes or changes in the information, such as price, availability, leases, or financing. The square footage is also an estimate and should be confirmed by a professional architect or engineer.

Floor plan

Georgette Apartments, E1

Approximate Gross Internal Area = 112 sq m / 1205 sq ft



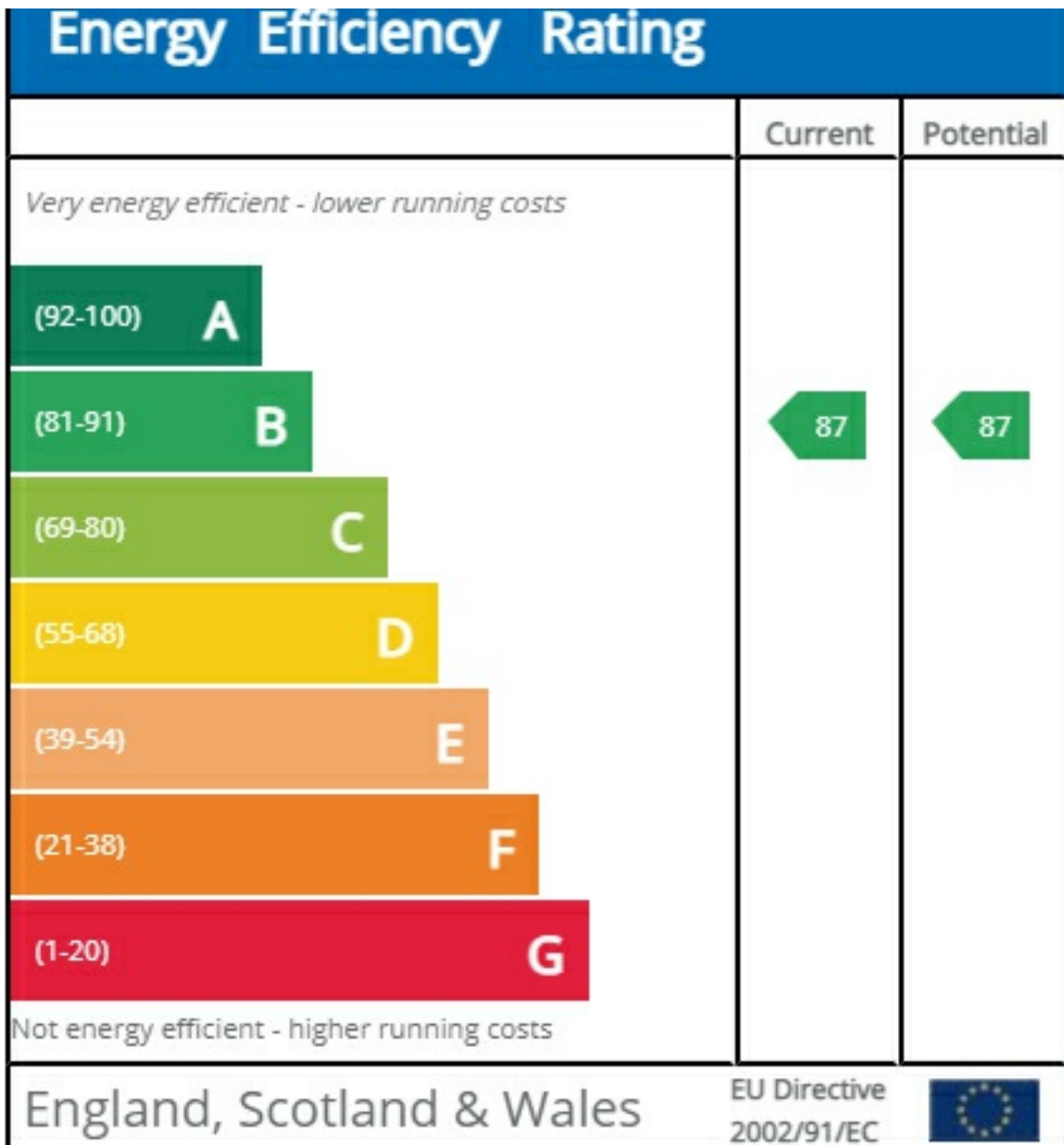
This floor plan is for representation purposes only and is not drawn to scale.

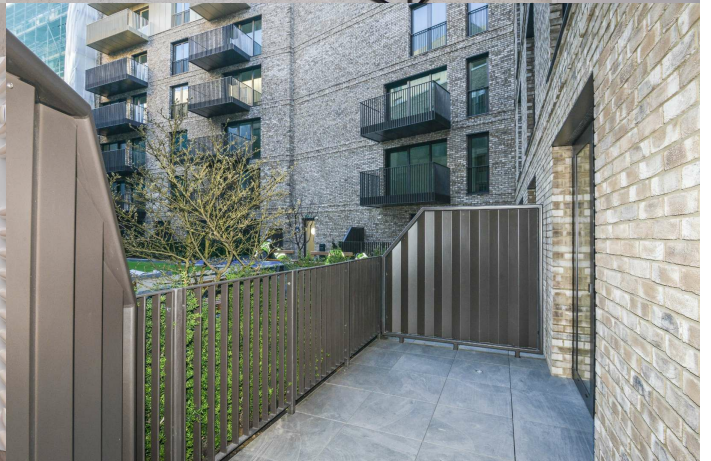
The Gross Internal Area includes outbuildings shown on the plan.

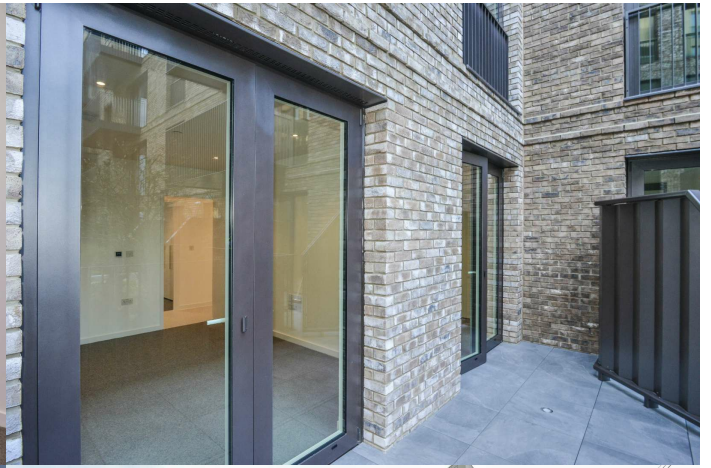
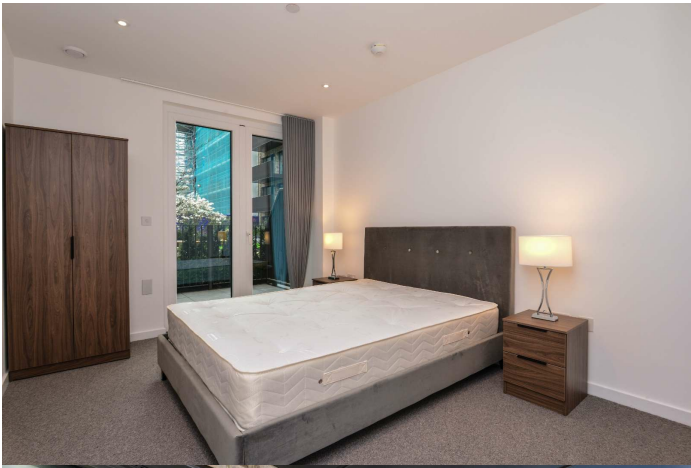
Whilst every attempt has been made to ensure the accuracy of the plan measurements of doors, windows and rooms are approximate only and should be checked before making any decisions reliant upon them.

Copyright Bespokeplans.co.uk (ID738467)

EPC









35a St Georges Road, London,
SE1 6EW
+44 (0) 207 401 2020

<https://globalhouseestates.com>

Level 24, Lee Garden One,
33 Hysan Ave, Causeway Bay,
Hong Kong
+852 3963 8411