

THE GATE, MANCHESTER, MANCHESTER

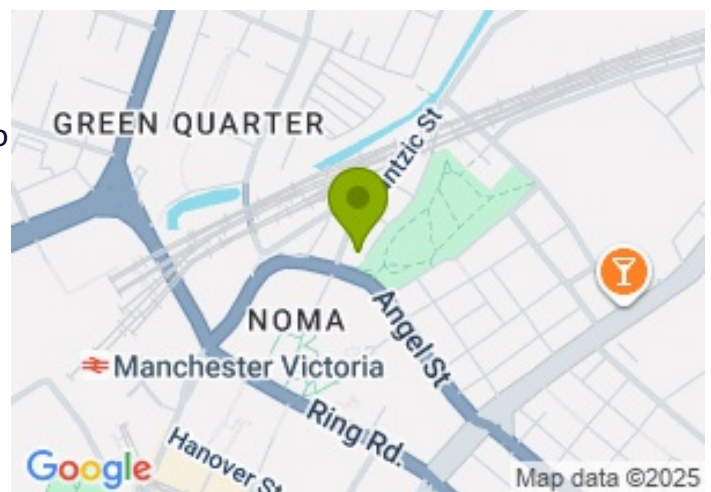
£1,200.00



FOR LET



- Spacious one bedroom apartment / unfurnished
- Parkside Development with amazing views to Angel Meadow Park and NOMA
- Secure entry system and concierge service
- Excellent public transport links - a few mins walk to Victoria Train Station & Shudehill Interchange
- A short walk to Arndale Shopping Centre
- Residents gym, lounge, working space and private dining facility



Property Description

GHE offers this delightful one bedroom apartment Meadowside - perfect for professionals or students those seeking a stylish city centre lifestyle.

Located in Victoria Riverside with overlooking Angel Meadow Park, Manchester's largest green space in the area. It is within easy walking distance to the central business district and major transport hubs. From the property it is less than a few minutes walk to Victoria Train Station and Shudehill Metrolink & Interchange. Also just short walking distance to Arndale Shopping Centre. You can find all your favourite shops, supermarkets, restaurants, cafes and bars.

Situated on the 8th floor, the apartment boasts a bright environment with floor-to-ceiling windows and offers spacious open-plan living space. A stylish modern kitchen with luxury integrated appliances is complemented by concealed LED lighting. Fitted wardrobes furnish a double bedroom. The bathroom features luxury fixtures and fittings including a mirrored vanity unit with concealed LED light and rain shower.

Residents have access to a private gym, resident's lounge, 24 hours concierge, terrace, shared working space and private dining facility.

Please contact GHE to book a viewing!

All data and information set forth on this website regarding real property, for sale, purchase, rental and/or financing, are from sources regarded as reliable. No warranties are made as to the accuracy of any descriptions and/or other details and such information is subject to errors, omissions, changes of price, tenancies, commissions, prior sales, leases or financing, or withdrawal without notice. Square footages are approximate and may be verified by consulting a professional architect or engineer.

Viewing

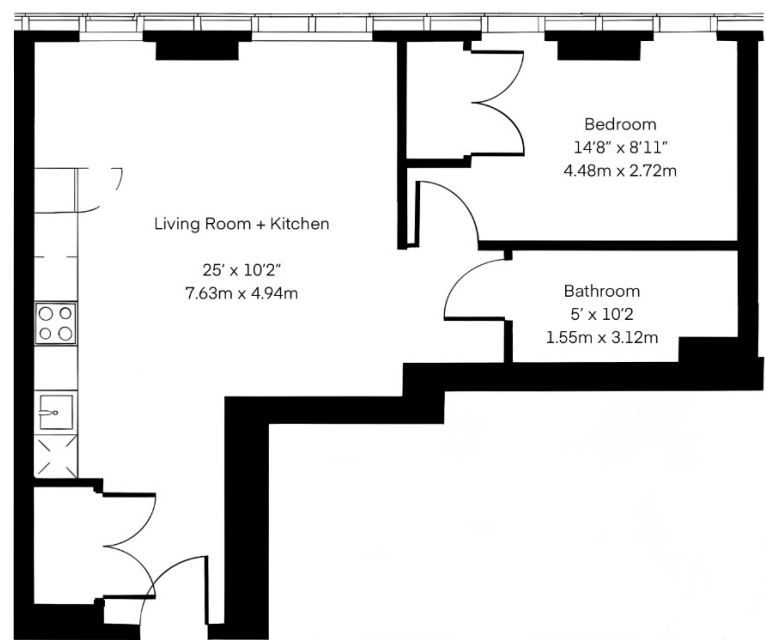
Please contact our Global House Estates Ltd Office on 0207 401 2020 if you wish to arrange a viewing appointment for this property or require further information.

Disclaimer

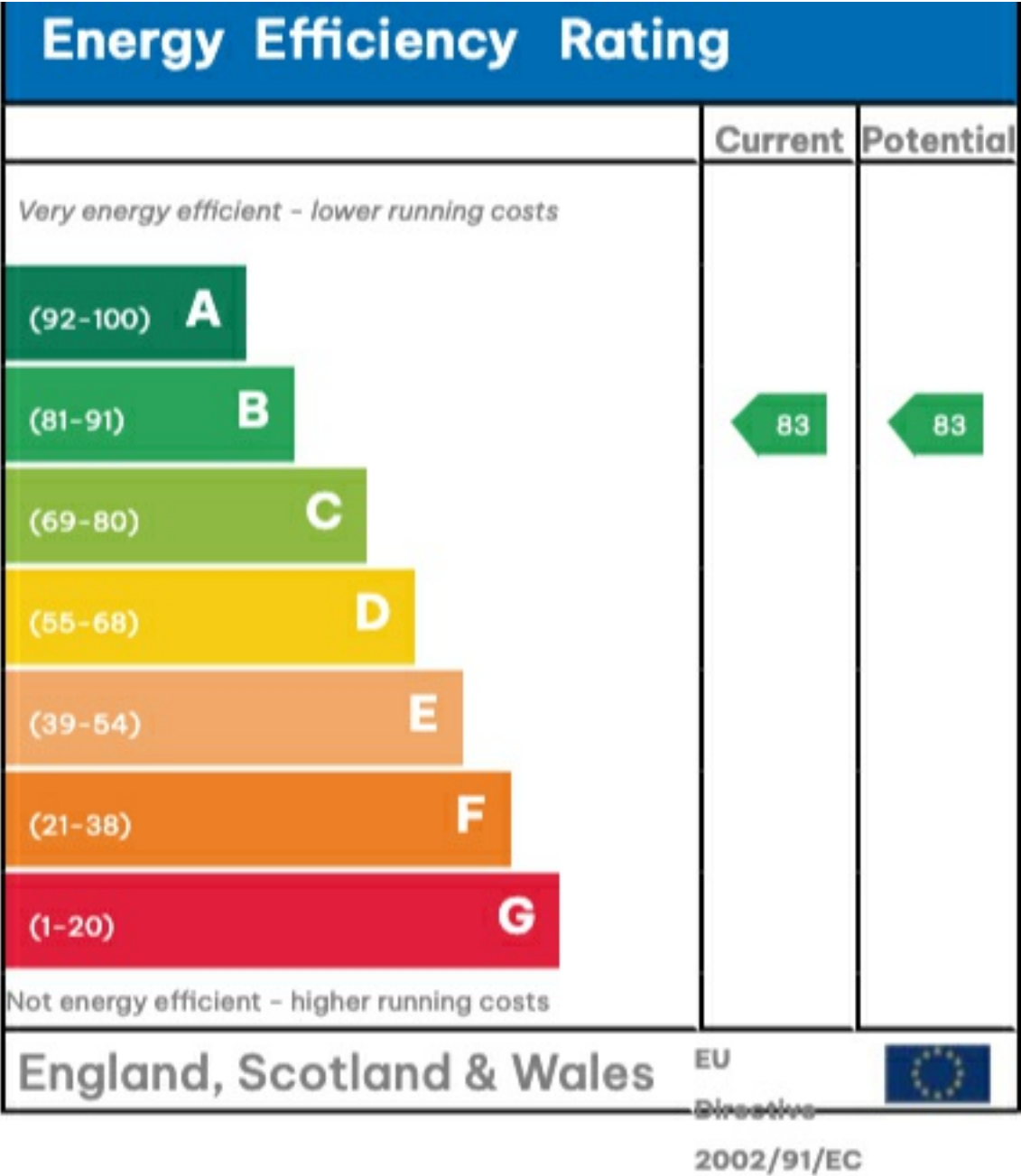
This website provides information about buying, selling, renting UK property. The information is from reliable sources, but we can't guarantee that it's always accurate. There may be mistakes or changes in the information, such as price, availability, leases, or financing. The square footage is also an estimate and should be confirmed by a professional architect or engineer.

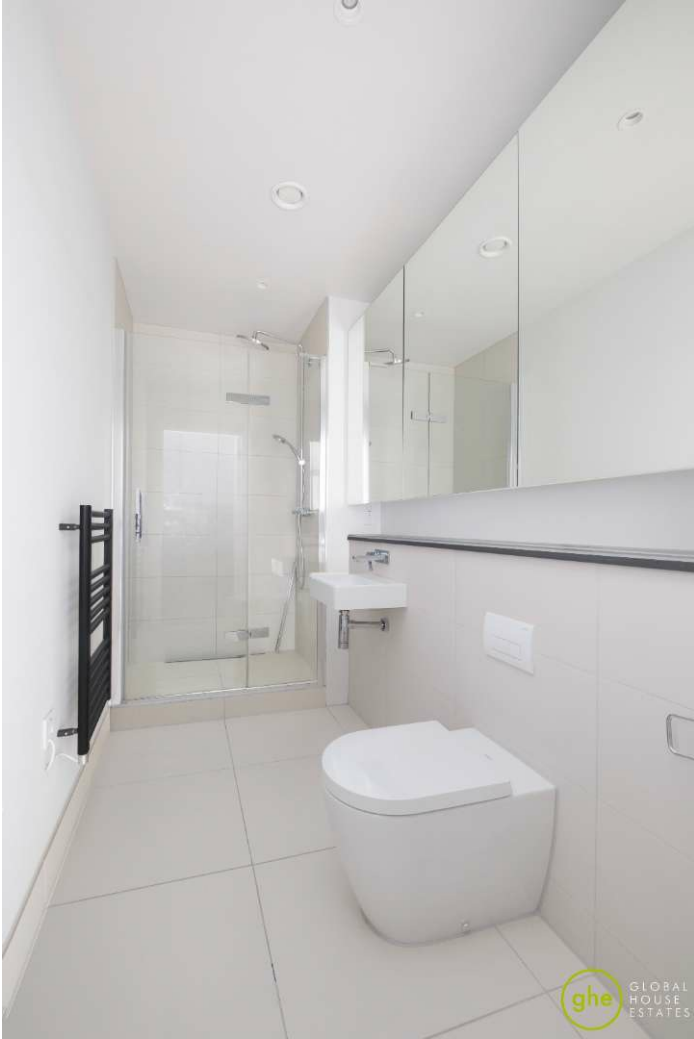
Floor plan

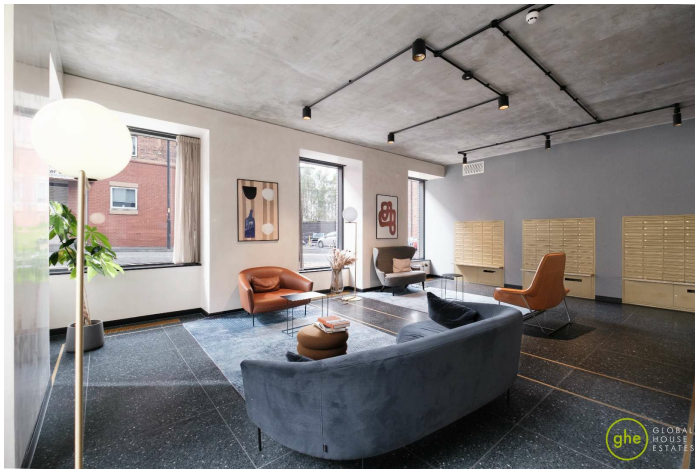
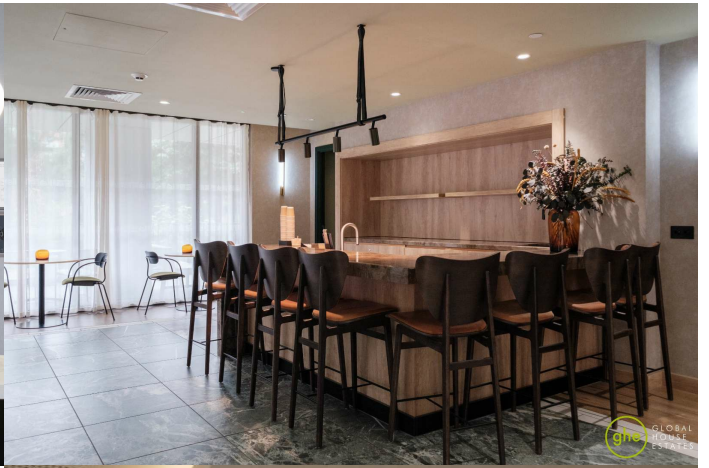
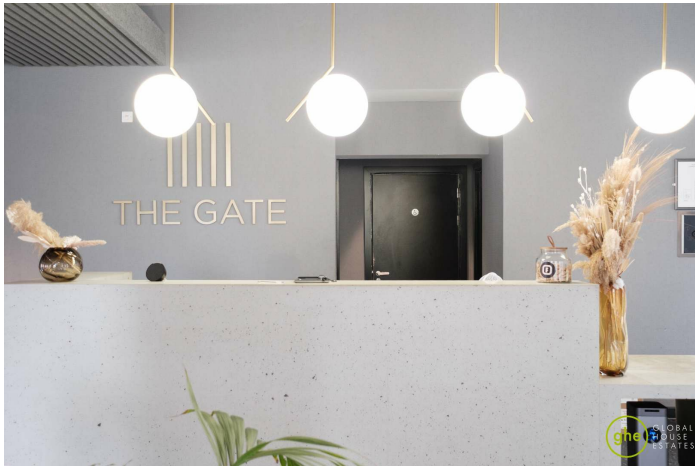
Approx. Total Area
51 sqm / 548 sqft



This floor plan is illustrative purposes only. It is not drawn to scale. Any measurements, floor areas (including any total floor area), openings and orientation are approximate. No details are guaranteed, they cannot be relied upon for any purpose and they do not form part of any agreement. No liability is taken for any error, omission or misstatement. A party must reply upon its own inspection(s).











35a St Georges Road, London,
SE1 6EW
+44 (0) 207 401 2020

<https://globalhouseestates.com>

Level 24, Lee Garden One,
33 Hysan Ave, Causeway Bay,
Hong Kong
+852 3963 8411