

THREAD CLOSE, MIDDLETON, MANCHESTER

£1,500.00



FOR LET



- Brand New Semi-detached house with a good size garden
- Spacious kitchen with modern integrated appliances
- Total 3 bathroom/shower/WC
- Bedroom 1 with en suite
- Driveway parking for two cars
- Quiet cul-de-sac position
- No Pet
- Available now



## Property Description

GHE is please to present this \*brand new\* 3 bedroom semi-detached house in the new development of East Hollinsfield, a wonderful family community. It is just located outside of Middleton, Manchester. This is a dream house you should not miss out!

The first thing you'll notice about the house is its bright entrance. The hallway opens to a practical, modern kitchen at the front of the house and a living room with wide patio doors at the rear. There's enough space to enjoy cosy meals at the kitchen table, or at a dining table in the lounge with its view of the garden. Adapt the upstairs to suit your lifestyle, whether that's a couple of bedrooms for the kids, or a guest room and study. And bedroom 1's en suite means there's more room for toys or toiletries in the family bathroom.

You can find all the local amenities you need including doctors and dentist surgeries, supermarkets, restaurants and bars, shops and cafes in Middleton Shopping Centre. Also within walking distance is a good rated secondary school.

J19 of the M62 is 2 minutes away for good connections to nearby towns, Manchester City Centre can be reached by road or rail within 30 minutes and the nearest bus route is 163 for Bury and Manchester, all making getting about more convenient.

Activities such as football clubs, gymnastics, running groups and martial arts, plus tennis and cricket clubs cater for children and adults alike. You can also enjoy the outdoors with a number of parks and golf courses.

Please call Global House Estates to arrange a viewing!

All data and information set forth on this website regarding real property, for sale, purchase, rental and/or financing, are from sources regarded as reliable. No warranties are made as to the accuracy of any descriptions and/or other details and such information is subject to errors, omissions, changes of price, tenancies, commissions, prior sales, leases or financing, or withdrawal without notice. Square footages are approximate and may be verified by consulting a professional architect or engineer.

## Viewing

Please contact our Global House Estates Ltd Office on 0207 401 2020 if you wish to arrange a viewing appointment for this property or require further information.

## Disclaimer

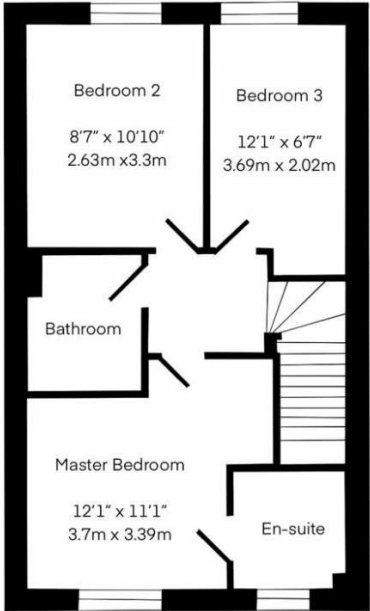
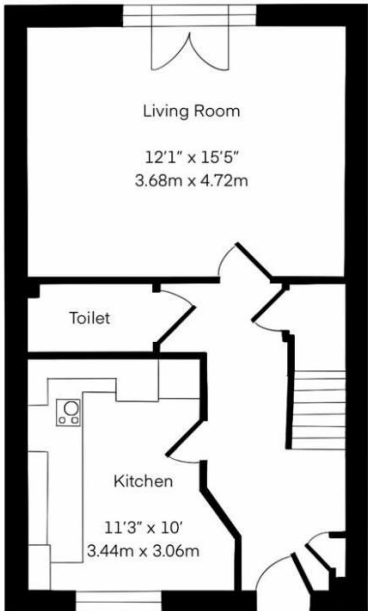
This website provides information about buying, selling, renting UK property. The information is from reliable sources, but we can't guarantee that it's always accurate. There may be mistakes or changes in the information, such as price, availability, leases, or financing. The square footage is also

an estimate and should be confirmed by a professional architect or engineer.

# Floor plan

Approx. Total Area

80 sqm / 861 sqft



This floor plan is illustrative purposes only. It is not drawn to scale. Any measurements, floor areas (including any total floor area), openings and orientation are approximate. No details are guaranteed, they cannot be relied upon for any purpose and they do not form part of any agreement. No liability is taken for any error, omission or misstatement. A party must reply upon its own inspection(s).

