

0247 401 2020 | enquiries@globalhouseestates.com

DUNTON ROAD, BERMONDSEY, LONDON

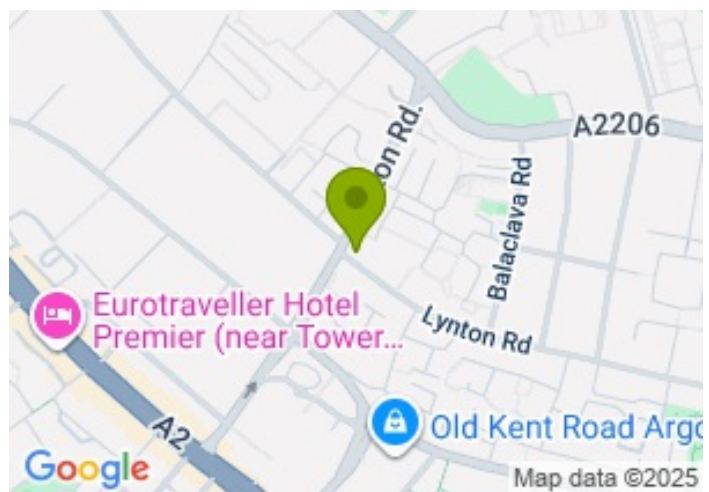
£450.00



FOR LET



- Two Double Bedroom Apartment
- Furnished
- Modern Kitchen
- Small Balcony
- Wooden Floors
- Benefits Extra Studio Room
- Great location for Bermondsey & Tower Bridge



Property Description

A well presented two double bedroom apartment set on the first floor of this terrace house just off the Old Kent road. Offered furnished, the property comprises spacious reception room with wood floor, stylish kitchen with access to a balcony and two good sized rooms and a contemporary bathroom. Dunton Road is near to a selection of local amenities as well as being near to the fashionable area of Tower Bridge. Located within walking distance of Bermondsey Street's wonderful bars and restaurants, Bermondsey Tube station, London Bridge station and the City of London are all within walking distance.

EPC Grade D, Deposit is £2250.00 Council Tax Band C

Viewing

Please contact our Global House Estates Ltd Office on 0207 401 2020 if you wish to arrange a viewing appointment for this property or require further information.

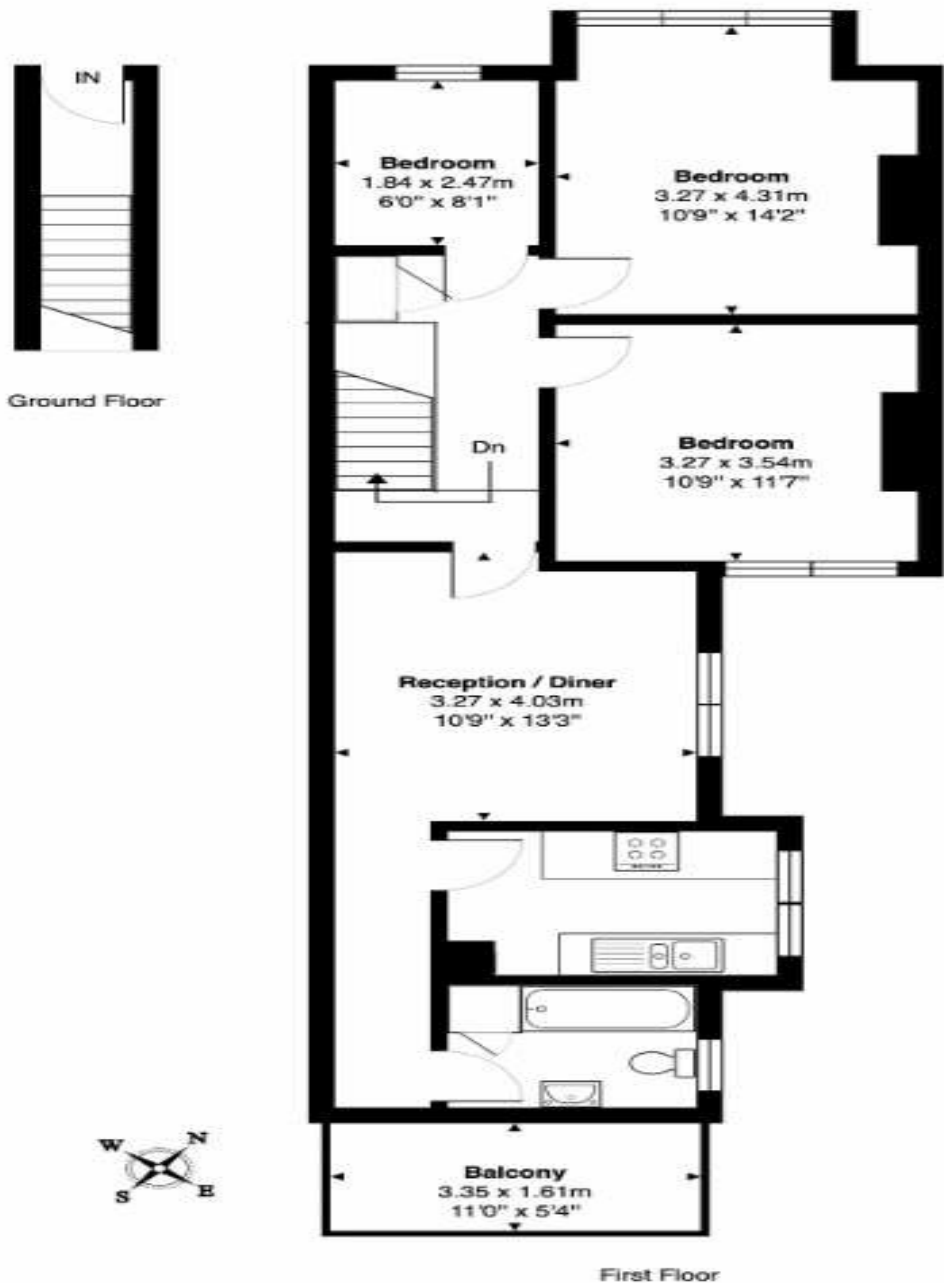
Disclaimer

This website provides information about buying, selling, renting UK property. The information is from reliable sources, but we can't guarantee that it's always accurate. There may be mistakes or changes in the information, such as price, availability, leases, or financing. The square footage is also an estimate and should be confirmed by a professional architect or engineer.

Floor plan

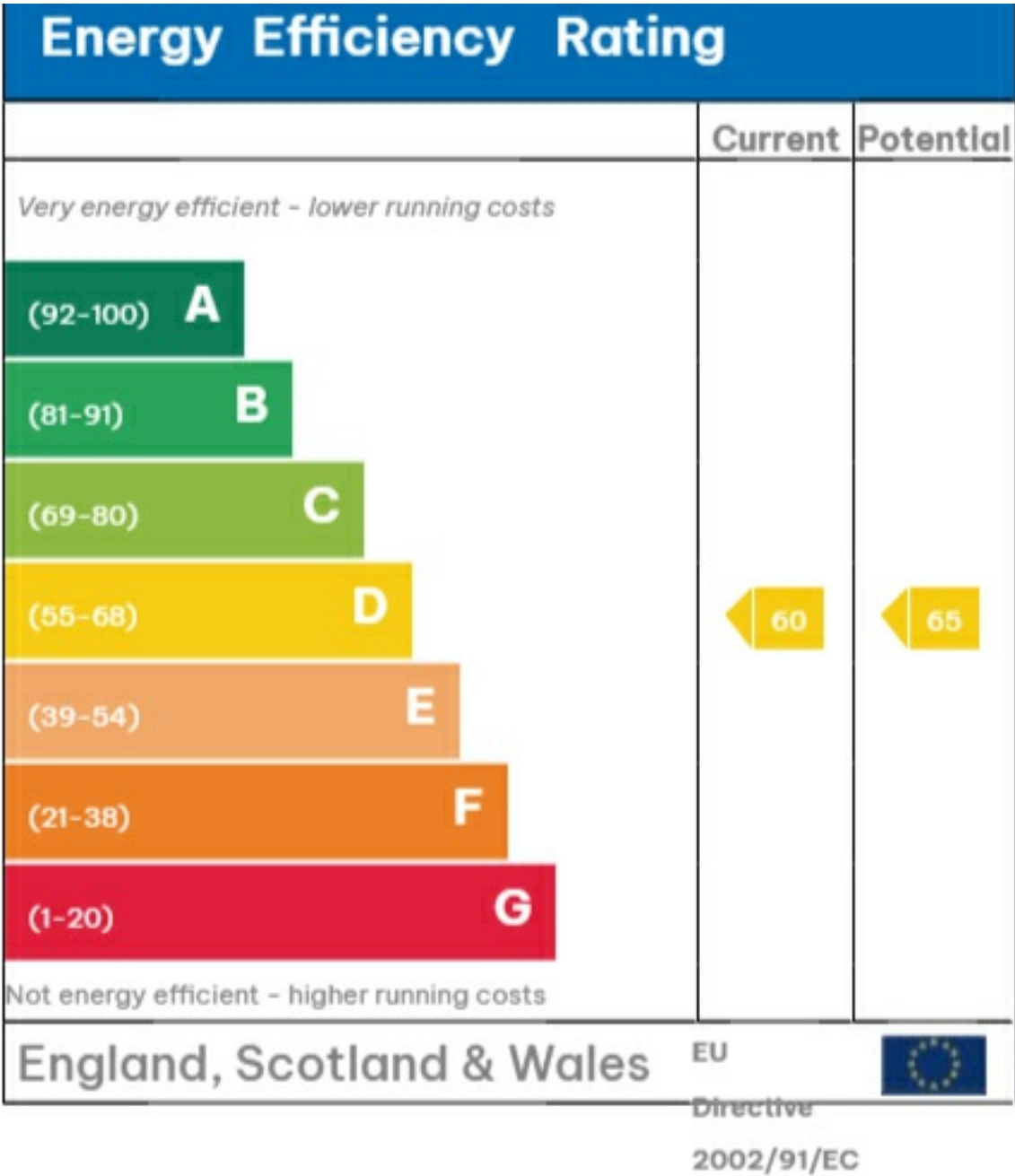
Dunton Road, SE17

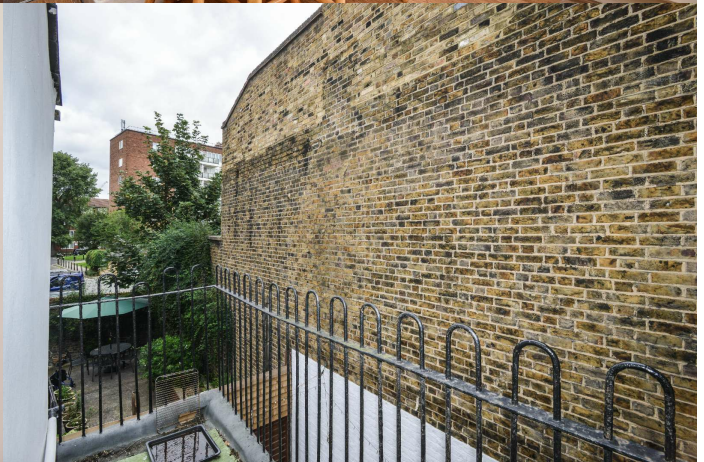
Total Area: 71.1 m² ... 765 ft² (excluding balcony)



This Floorplan is provided without warranty, of any kind.
Bespoke Plans disclaims any warranty including,
without limitation, satisfaction, quality or accuracy of any dimensions.

EPC







35a St Georges Road, London,
SE1 6EW
+44 (0) 207 401 2020

<https://globalhouseestates.com>

Level 24, Lee Garden One,
33 Hysan Ave, Causeway Bay,
Hong Kong
+852 3963 8411