

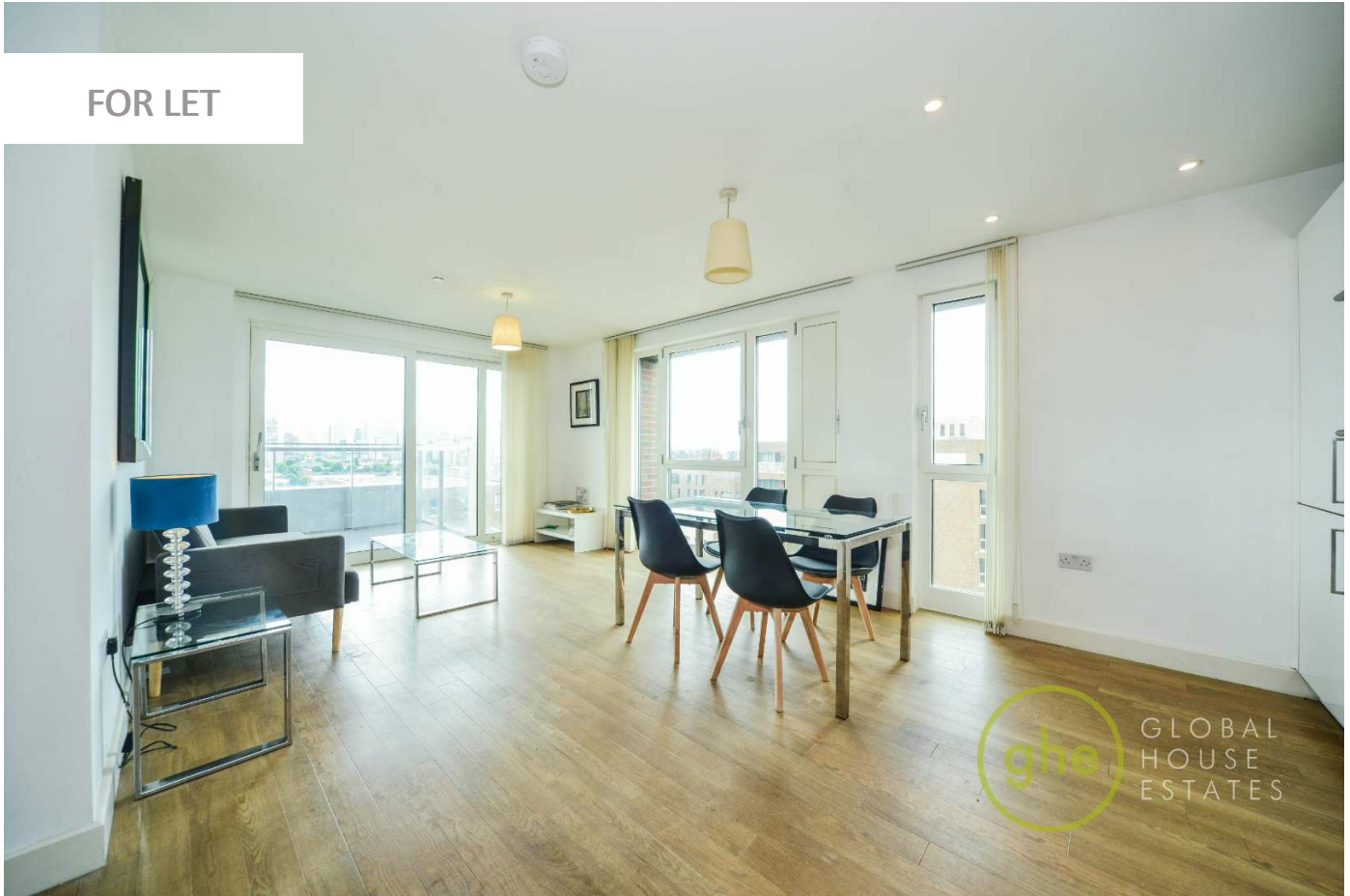
0247 401 2020 | enquiries@globalhouseestates.com

JEFFERSON PLAZA, BROMLEY BY BOW, LONDON

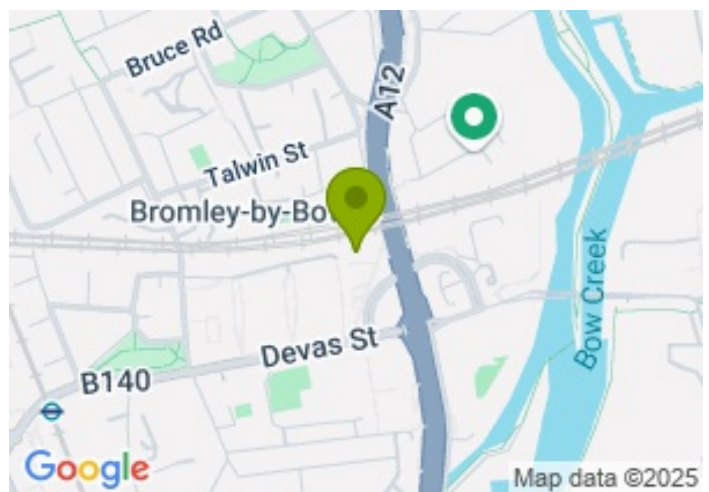
£750.00



FOR LET



- Three double bedrooms
- Large open plan kitchen and reception
- Balcony
- Fantastic views
- Furnished
- Concierge
- Gym



Property Description

A bright and spacious three-bedroom, two-bathroom apartment. This property covers 846 sq ft and features a large living area with floor to ceiling windows that open onto a balcony with great views. There's a separate modern kitchen and dining space, wood flooring throughout, three well sized bedrooms, including a main bedroom with built in storage and en suite and a second bathroom. There's also plenty of storage.

Residents enjoy access to a 24-hour concierge, secure parking, a residents-only gym, and roof terraces with wide-reaching views across London.

Just a 2-minute walk from Bromley by Bow Underground and Devons Road DLR stations, the location offers fast connections via the District, Hammersmith & City, and DLR lines. Canary Wharf is 16 minutes away and Moorgate 23 minutes.

Green spaces like Mile End Park and Bartlett Park are nearby, and the development sits between Stratford and Canary Wharf, with easy access to the City. A great spot for convenient city living.

Viewing

Please contact our Global House Estates Ltd Office on 0207 401 2020 if you wish to arrange a viewing appointment for this property or require further information.

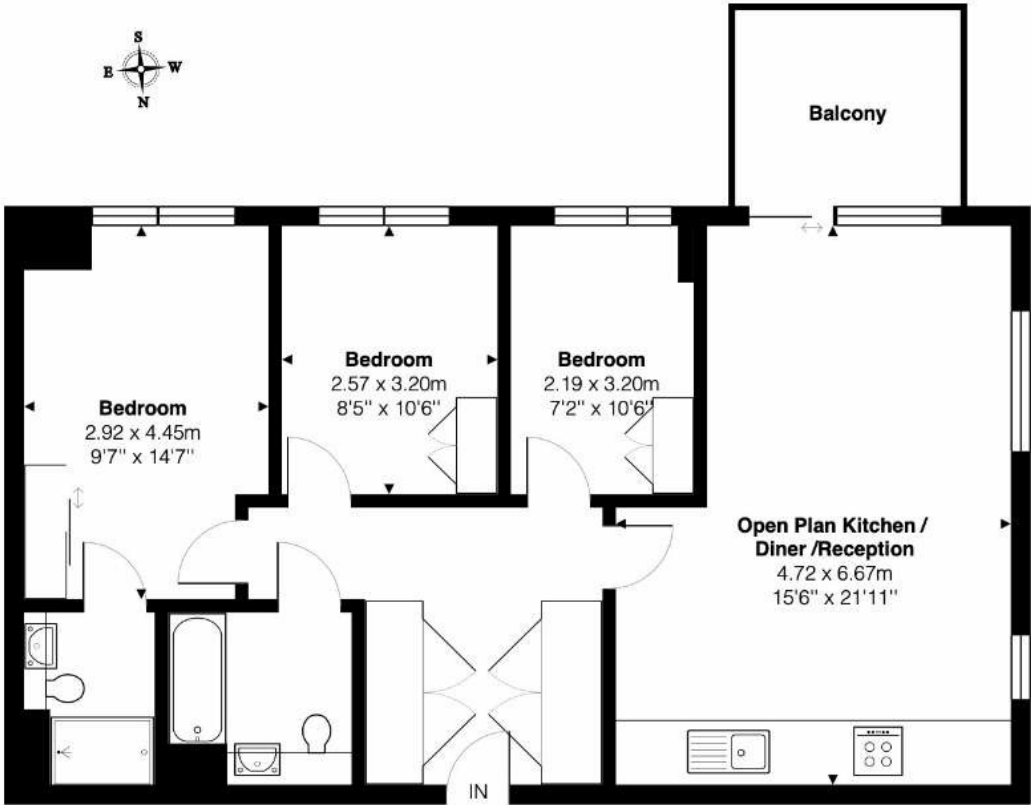
Disclaimer

This website provides information about buying, selling, renting UK property. The information is from reliable sources, but we can't guarantee that it's always accurate. There may be mistakes or changes in the information, such as price, availability, leases, or financing. The square footage is also an estimate and should be confirmed by a professional architect or engineer.

Floor plan

Marner Point, E3

Total Area: 78.6 m² ... 846 ft² (excluding balcony)



8th Floor

This Floor plan is provided without warranty, of any kind.
Bespoke Plans disclaims any warranty including,
without limitation, satisfaction, quality or accuracy of any dimensions

