

0247 401 2020 | [enquiries@globalhouseestates.com](mailto:enquiries@globalhouseestates.com)

## 1 YORK WAY, KINGS CROSS, LONDON

£685.00



FOR LET



- One bedroom 5th floor apartment
- Private balcony
- 24 hour concierge
- Superb Location
- 520 Square Feet



## Property Description

GHE is excited to offer this one-bedroom apartment in the prestigious Arthouse development in Kings Cross. This apartment offers a bright and generously sized living space, complete with wood floors, open plan to a modern, integrated kitchen. A private balcony, accessible from both the bedroom and the living room.

Located just moments away from the serene Regents Canal, this property provides easy access to a plethora of amenities in the area. You'll find yourself in the vibrant vicinity of Coal Drops Yard, with an array of boutiques and cafés. Granary Square, with its spacious surroundings and Canopy Market featuring artisanal food offerings, is a stone's throw away.

Kings Cross St Pancras station, with its unrivaled transport links, is your gateway to easy and convenient travel both within London and beyond, including the UK and international destinations. The development itself offers a 24-hour concierge service, communal gardens, and designated resident areas within the building, providing the perfect spaces for relaxation and community interaction.

Disclaimer: All data and information set forth on this website regarding real property, for sale, purchase, rental and/or financing, are from sources regarded as reliable. No warranties are made as to the accuracy of any descriptions and/or other details and such information is subject to errors, omissions, changes of price, tenancies, commissions, prior sales, leases or financing, or withdrawal without notice. Square footages are approximate and may be verified by consulting a professional architect or engineer.

## Viewing

Please contact our Global House Estates Ltd Office on 0207 401 2020 if you wish to arrange a viewing appointment for this property or require further information.

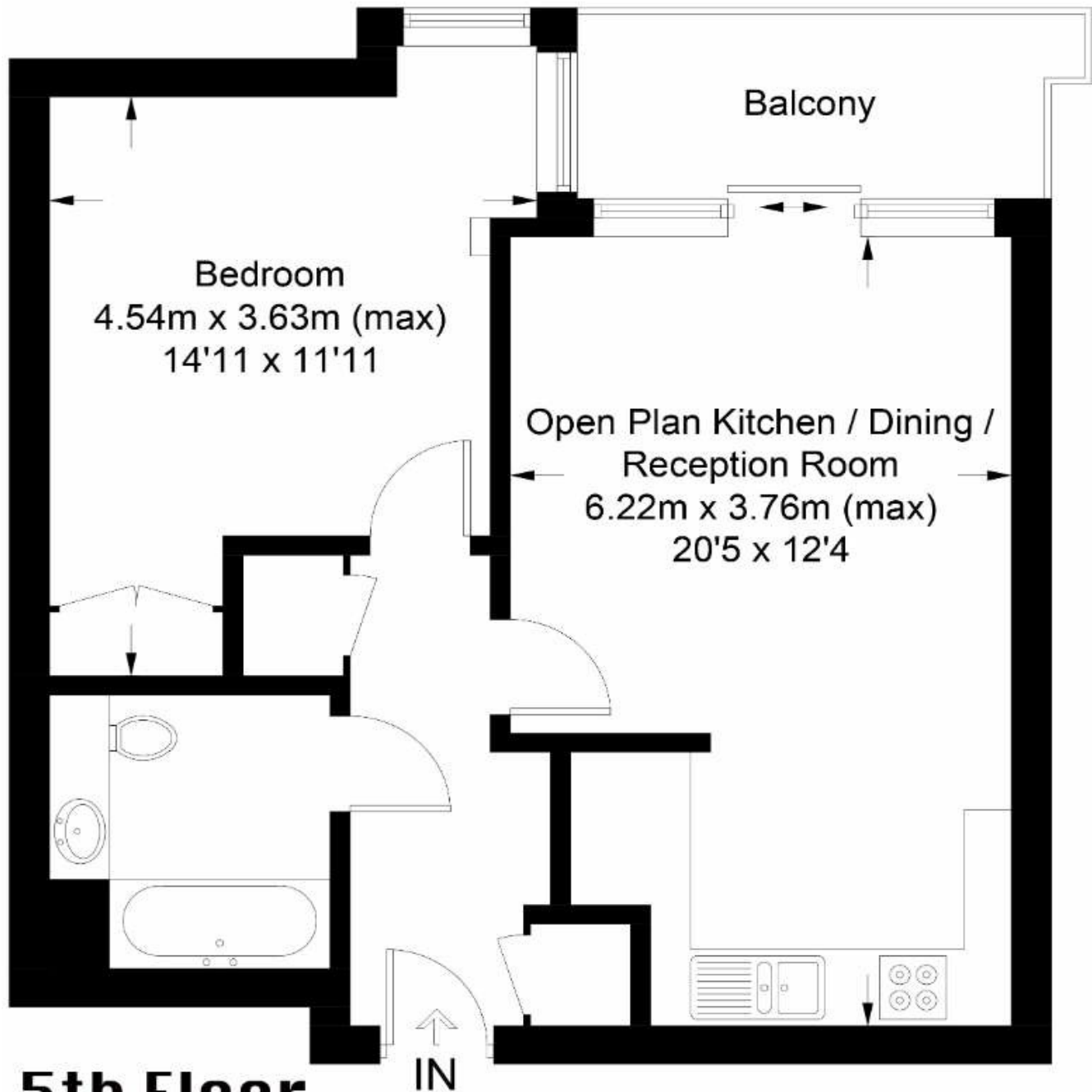
## Disclaimer

This website provides information about buying, selling, renting UK property. The information is from reliable sources, but we can't guarantee that it's always accurate. There may be mistakes or changes in the information, such as price, availability, leases, or financing. The square footage is also an estimate and should be confirmed by a professional architect or engineer.

# Floor plan

## York Way, N1C

Approximate Gross Internal Area = 48.3 sq m / 520 sq ft

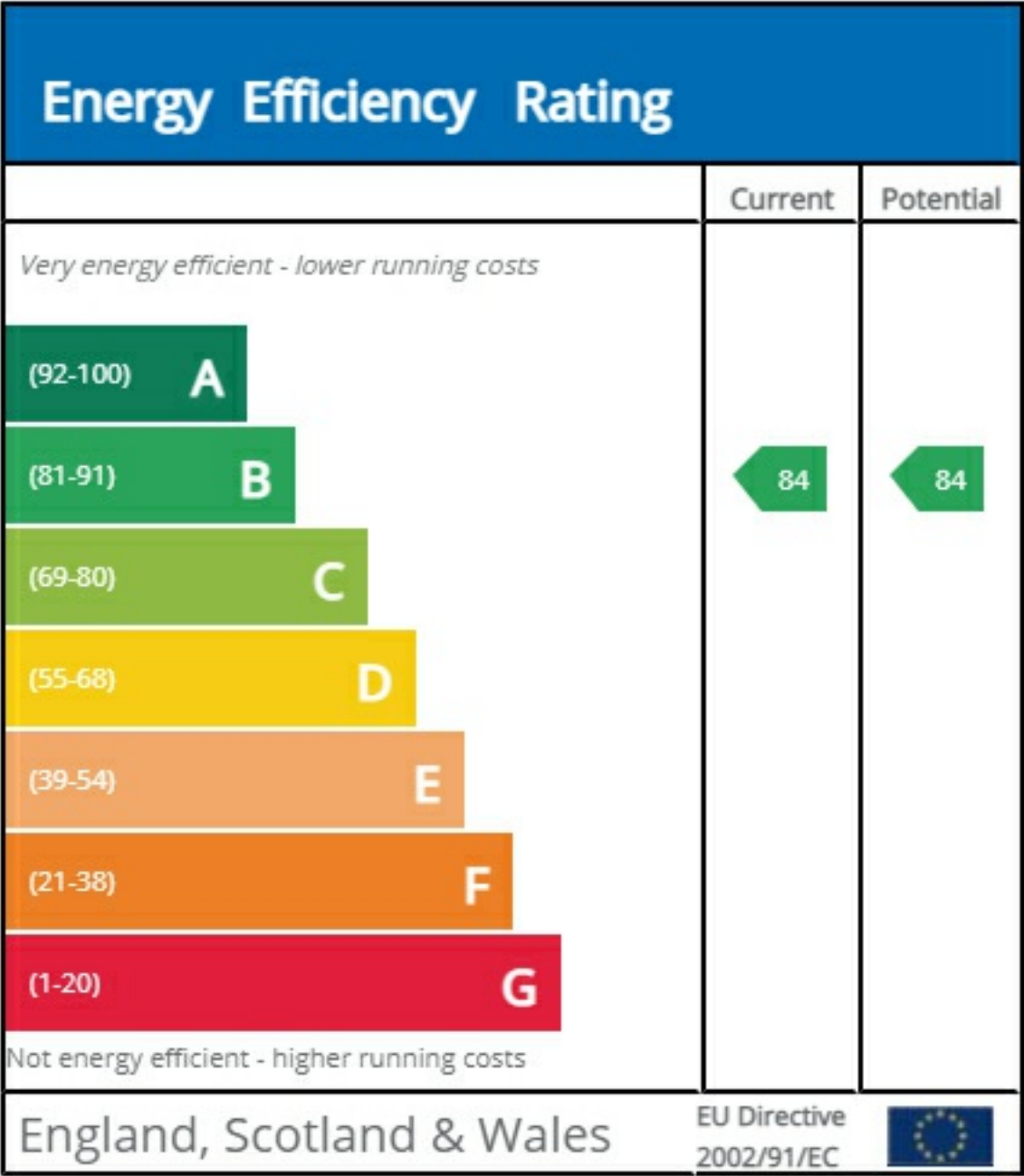


This floor plan is for representation purposes only and is not drawn to scale.

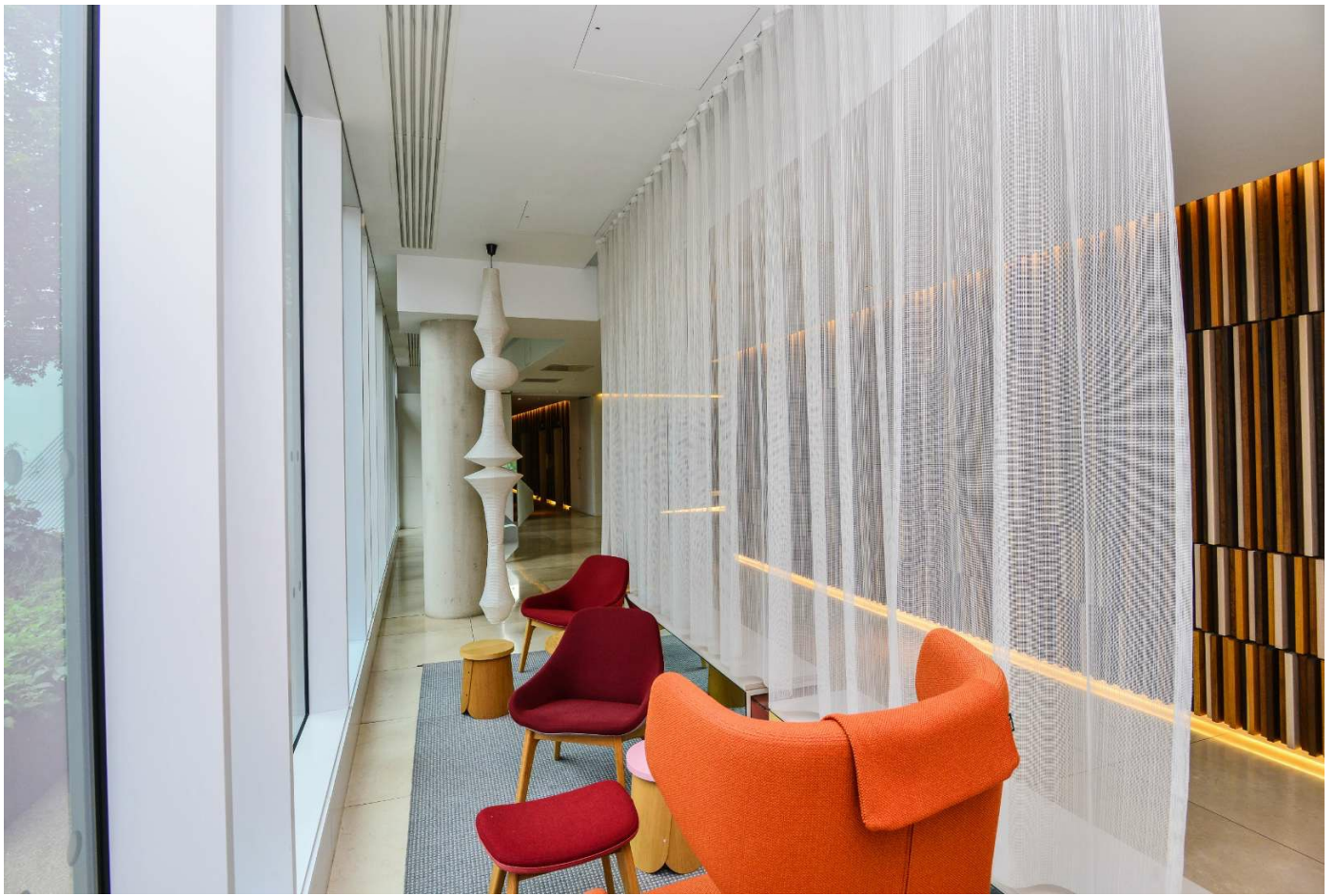
**The Gross Internal Area includes outbuildings shown on the plan.**

Whilst every attempt has been made to ensure the accuracy of the plan measurements of doors, windows and rooms are approximate only and should be checked before making any decisions reliant upon them.

Copyright Bespokeplans.co.uk (ID766567)







35a St Georges Road, London,  
SE1 6EW  
+44 (0) 207 401 2020

<https://globalhouseestates.com>

Level 24, Lee Garden One,  
33 Hysan Ave, Causeway Bay,  
Hong Kong  
+852 3963 8411