

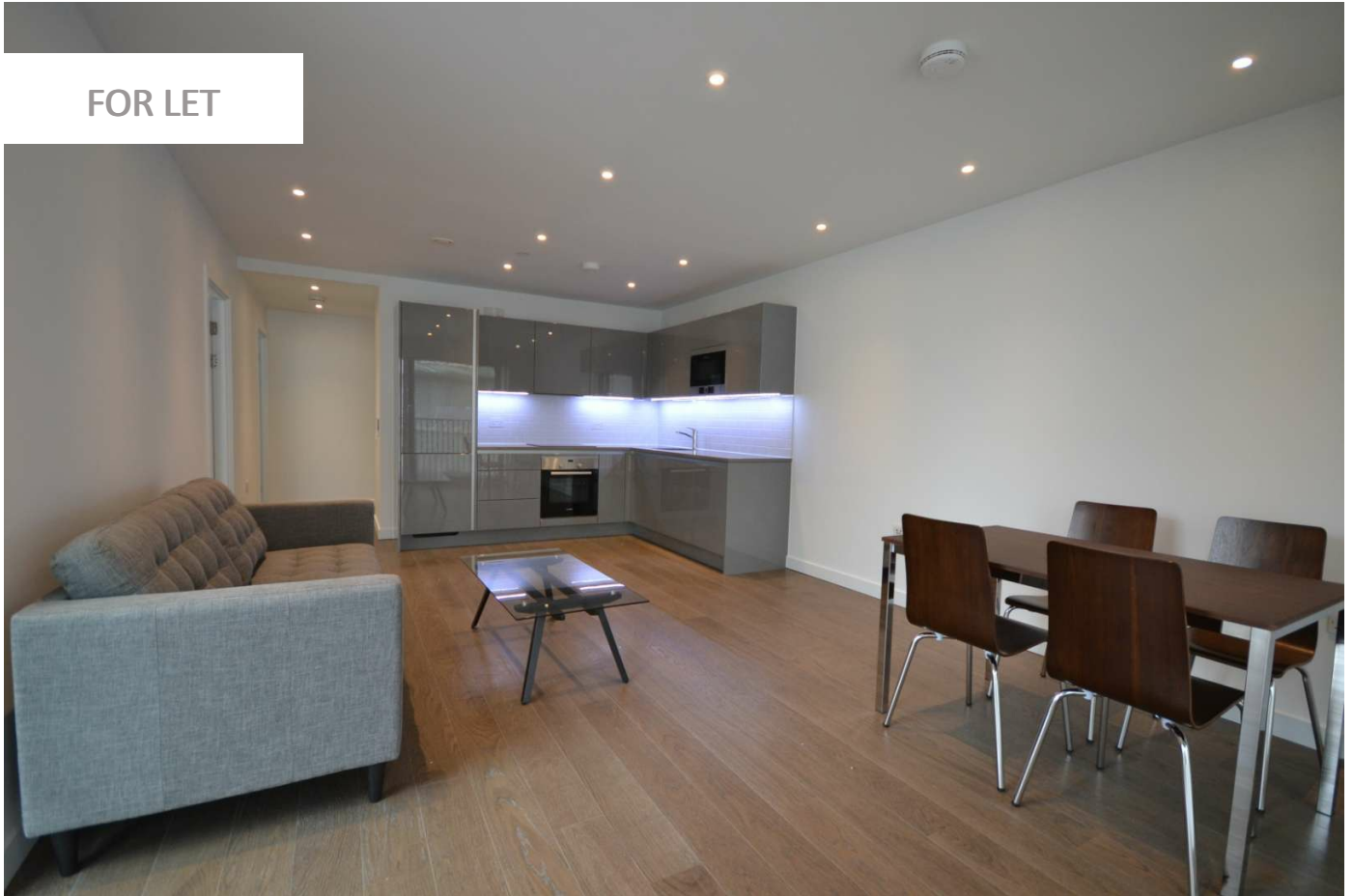
0247 401 2020 | [enquiries@globalhouseestates.com](mailto:enquiries@globalhouseestates.com)

6 SAYER STREET, ELEPHANT PARK, LONDON

£738.46



FOR LET



- Modern two bed room with balcony
- 24 hour concierge
- Resident lounge and terrace
- Security access
- Underfloor heating
- Bicycle storage



## Property Description

A modern and sleek two bed room apartment to rent from the 1st of July in Elephant Park, Elephant and Castle.

This stunning 2-bedroom apartment on the 6th floor is fully furnished, with balcony and under floor heating through out. Benefitting from two double bed rooms, large open plan lounge and kitchen space with 24 hours concierge and gym and communal roof terrace and lounge.

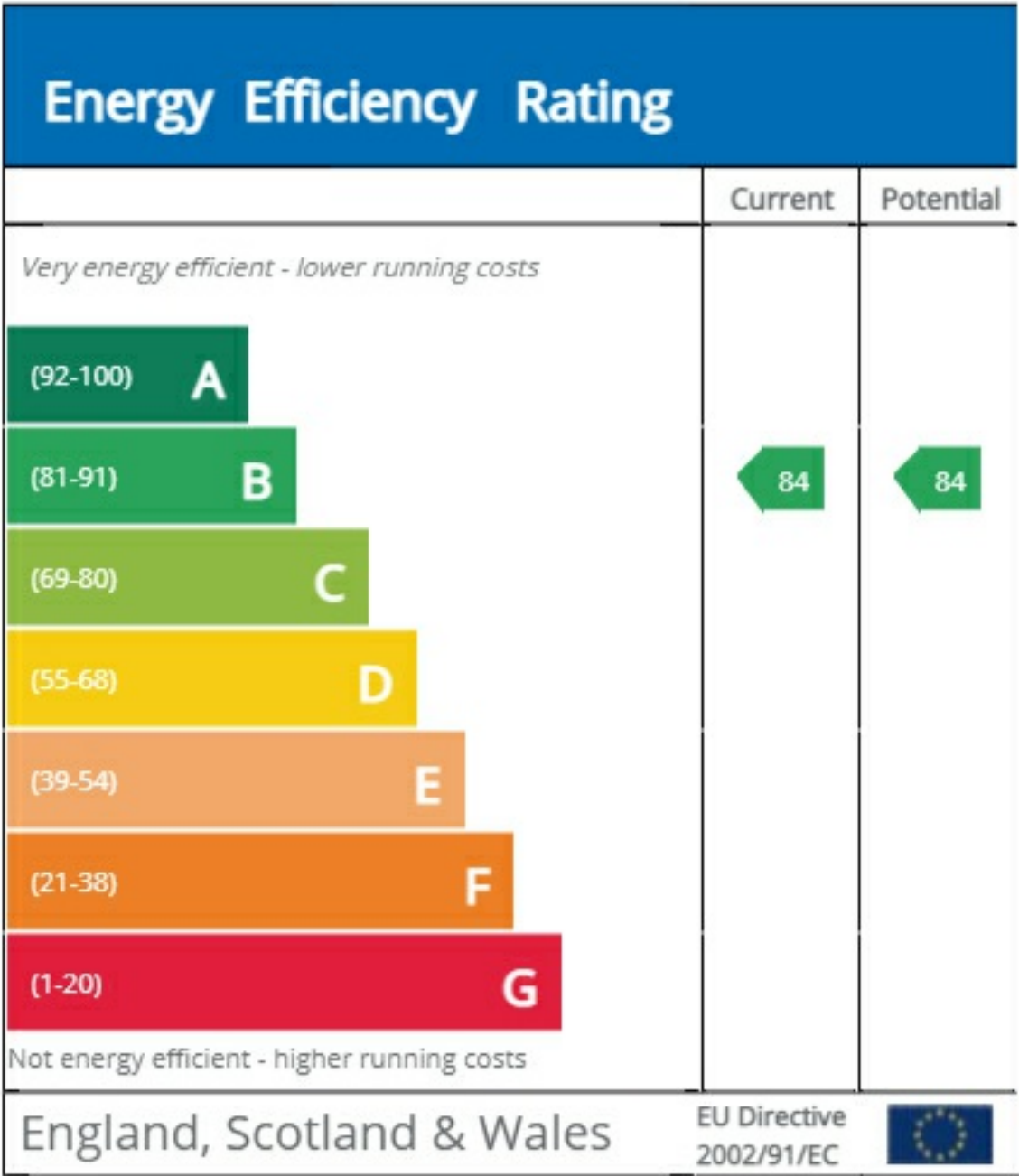
Living in Baldwin point allows resident to have unrivalled access to the City of London via multiple rail, tube and bus links. Local amenities includes new trendy bars, cafes and restaurants. Luxury gym such as Gymbox is only moments walk away. Foodies will enjoy easy access to multiple large outdoor food market such as Borough Market and Mercato Metropolitano.

## Viewing

Please contact our Global House Estates Ltd Office on 0207 401 2020 if you wish to arrange a viewing appointment for this property or require further information.

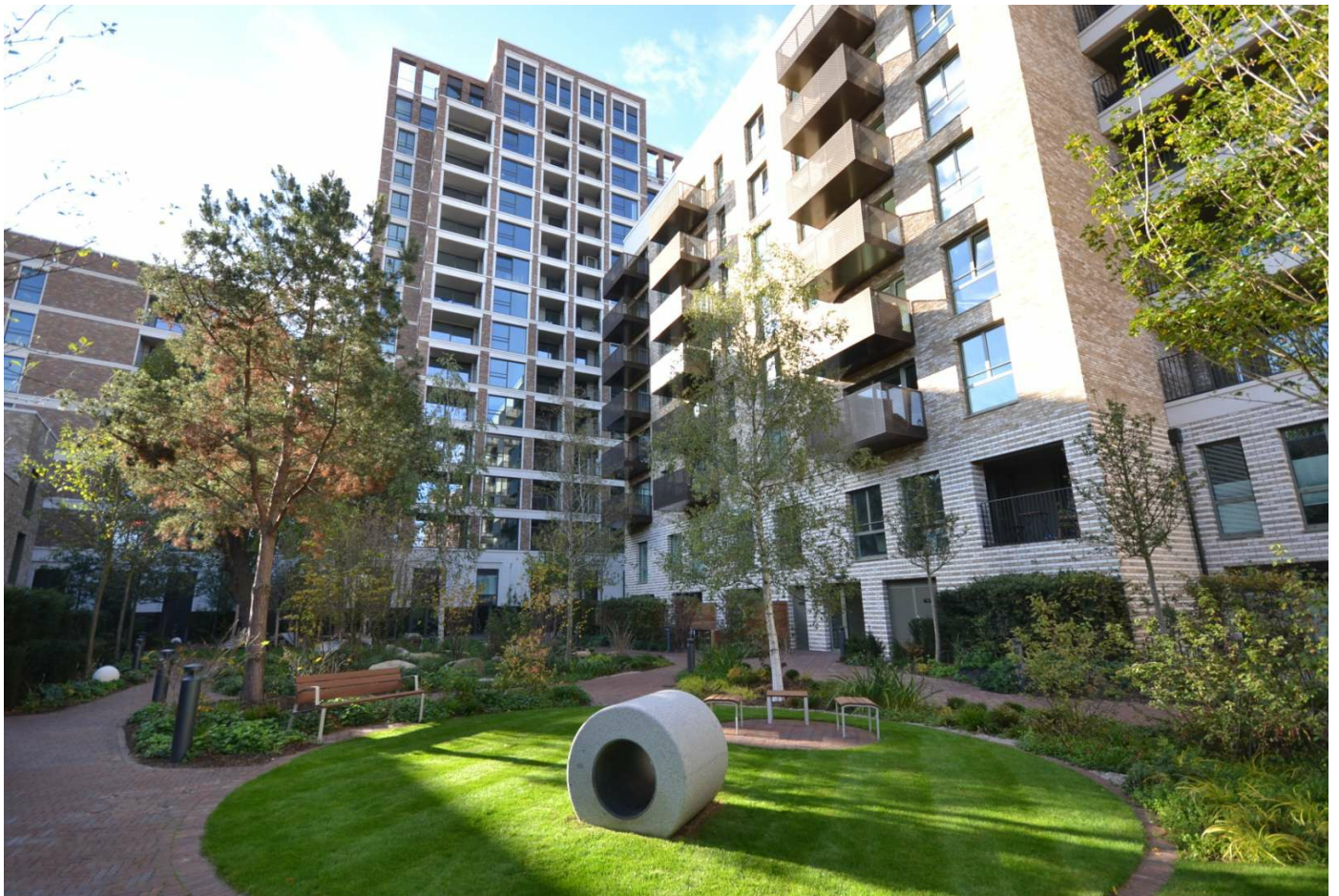
## Disclaimer

This website provides information about buying, selling, renting UK property. The information is from reliable sources, but we can't guarantee that it's always accurate. There may be mistakes or changes in the information, such as price, availability, leases, or financing. The square footage is also an estimate and should be confirmed by a professional architect or engineer.









35a St Georges Road, London,  
SE1 6EW  
+44 (0) 207 401 2020

<https://globalhouseestates.com>

Level 24, Lee Garden One,  
33 Hysan Ave, Causeway Bay,  
Hong Kong  
+852 3963 8411