

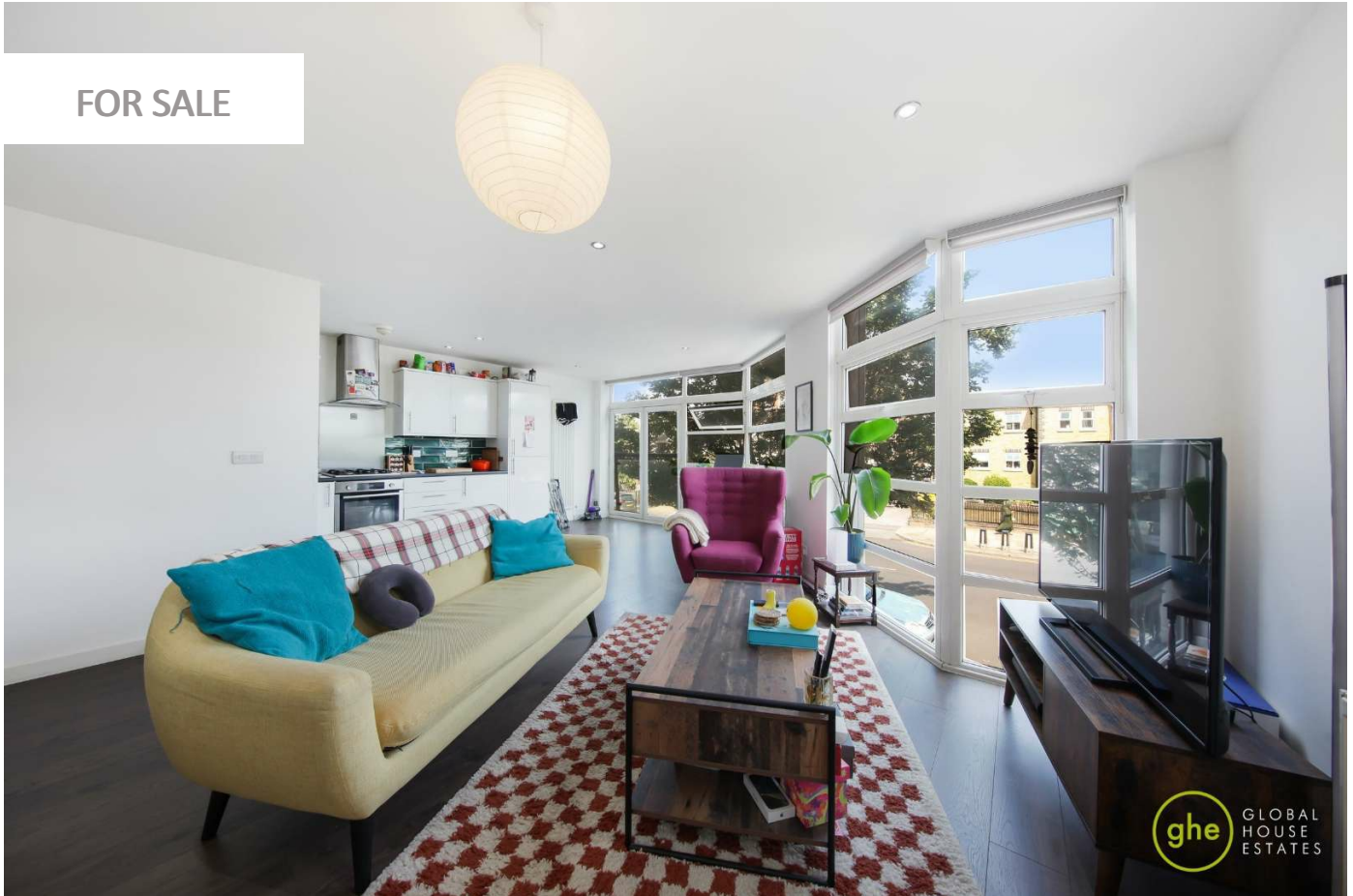
0247 401 2020 | enquiries@globalhouseestates.com

CAESAR COURT, BETHNAL GREEN, LONDON

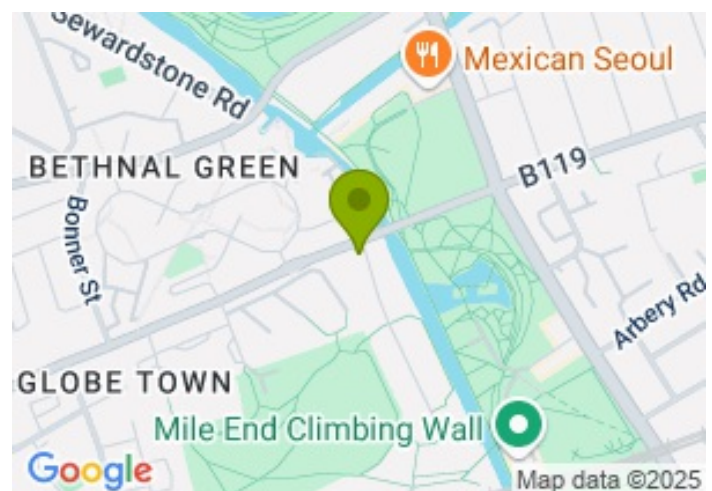
£340,000.00



FOR SALE



- Spacious one bedroom flat
- Great investment opportunity
- Fantastic transportation links
- Plethora of local amenities
- Walking distance to Bethnal Green Underground Station
- Open-plan kitchen and living area
- No chain



Property Description

This stylish and beautifully presented one-bedroom apartment is situated on the first floor of Caesar Court, a modern development nestled in a well-connected corner of Bethnal Green. Perfectly located on Palmer's Road, the property offers an ideal blend of contemporary living and urban convenience.

Upon entering, you are welcomed by a spacious hallway featuring a built-in storage cupboard, providing practical everyday organisation. The heart of the home is the airy open-plan living area, enhanced by floor-to-ceiling double-glazed windows that allow natural light to flood the space. The adjoining kitchen is sleek and functional, offering ample storage and worktop space.

The generously sized bedroom is thoughtfully designed to provide a calm and comfortable retreat, while the large, contemporary three-piece bathroom has a clean and modern finish.

Set in a lively and friendly neighbourhood, Caesar Court is just a short stroll from Bethnal Green and Mile End Underground stations, offering quick and easy access to Central London via the Central and District Lines as well as several bus routes available right outside the development. The nearby Regent's Canal and Victoria Park provide a welcome escape into nature, all within walking distance! The park hosts regular community events throughout the year, including summer music performances at the bandstand, food festivals, and open-air fitness sessions. Residents can enjoy a lakeside brunch at the popular Pavilion Café or grab coffee and light bites from The Hub Café, both located within the park. Nearby, the streets around offer a range of vibrant cafés and restaurants, making it a perfect spot for both relaxation and socialising.

Offered with no onward chain and vacant possession, this apartment also presents a fantastic investment opportunity for a cash buyer, with a gross rental yield of over 6%. Contact us today to arrange a viewing!

Service charge: circa £2780 per annum

Ground rent: £200 per annum

Lease: 101 years remaining

All data and information set forth on this website regarding real property, for sale, purchase, rental and/or financing, are from sources regarded as reliable. No warranties are made as to the accuracy of any descriptions and/or other details and such information is subject to errors, omissions, changes of price, tenancies, commissions, prior sales, leases or financing, or withdrawal without notice. Square footages are approximate and may be verified by consulting a professional architect or engineer.

Viewing

Please contact our Global House Estates Ltd Office on 0207 401 2020 if you wish to arrange a

viewing appointment for this property or require further information.

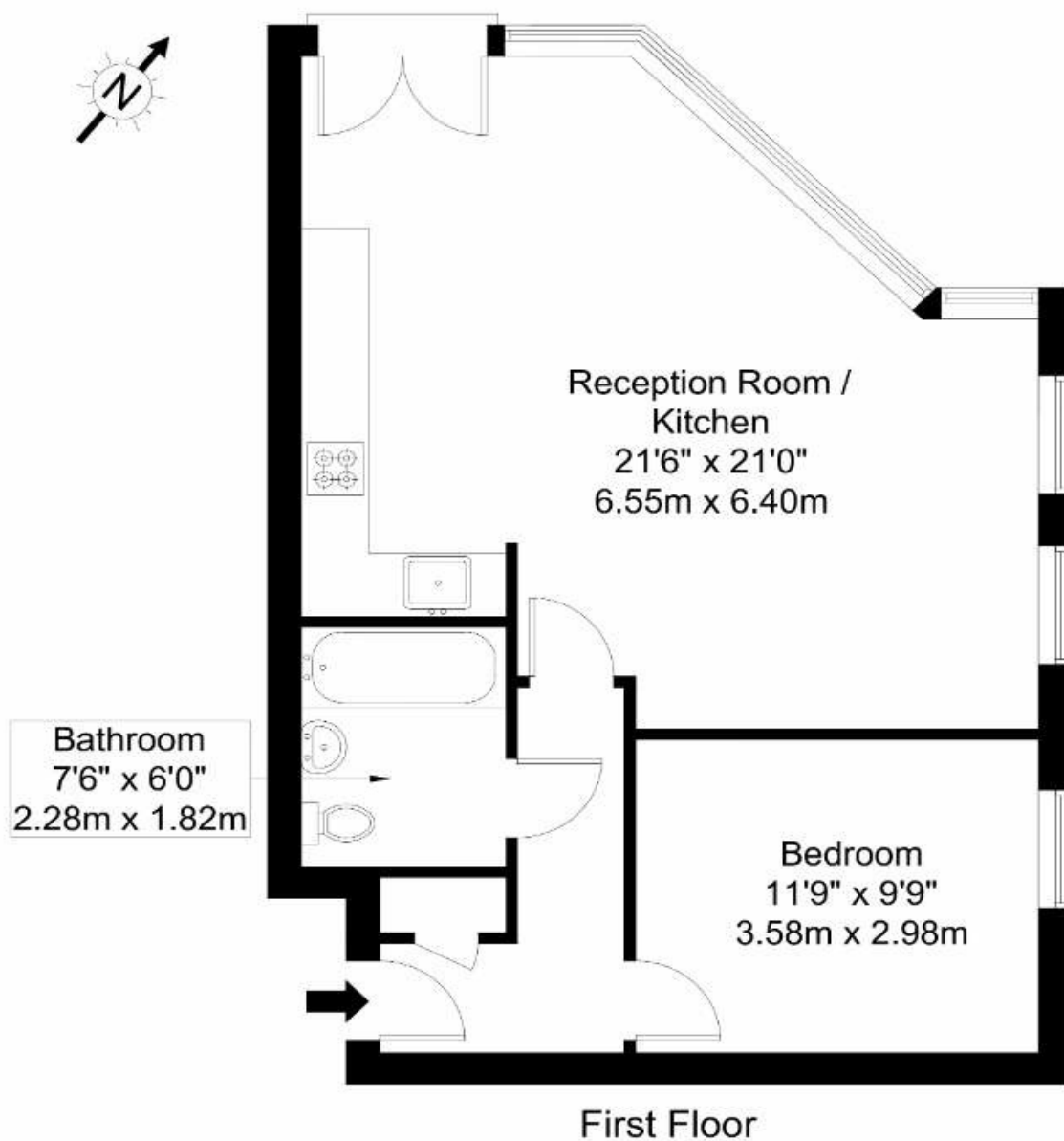
Disclaimer

This website provides information about buying, selling, renting UK property. The information is from reliable sources, but we can't guarantee that it's always accurate. There may be mistakes or changes in the information, such as price, availability, leases, or financing. The square footage is also an estimate and should be confirmed by a professional architect or engineer.

Floor plan

Palmers Road, E2 0SG

Approx Gross Internal Area = 55.04 sq m / 592 sq ft

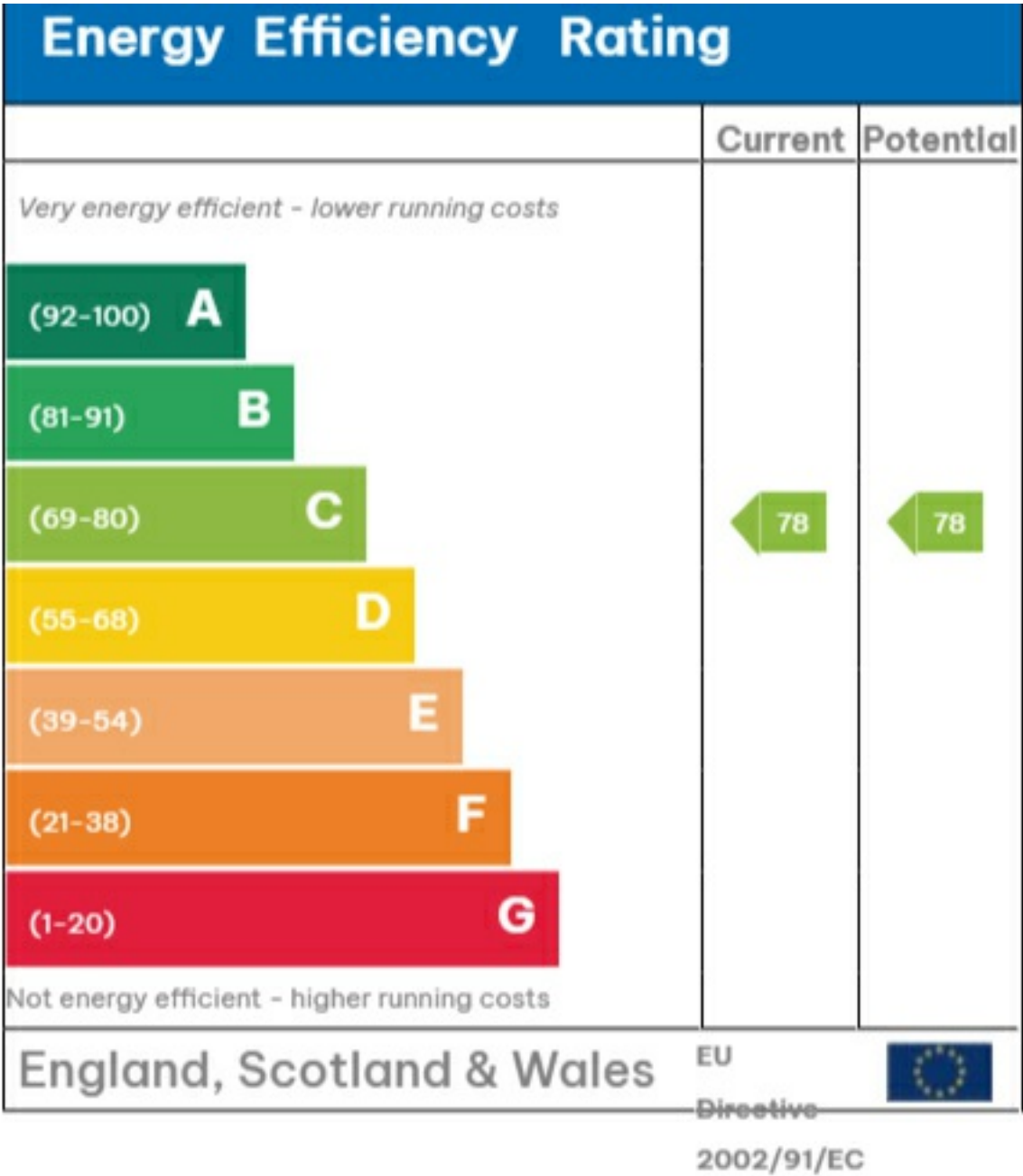


Ref :

Copyright **BLEU
PLAN**

The Floor plan is not to scale and measurements and areas shown are approximate and therefore should be used for illustrative purposes only. The plan has been prepared in accordance with the RICS code of Measuring Practice and whilst we have confidence in the information produced it must not be relied on. Maximum lengths and widths are represented on the floor plan. If there is any aspect of particular importance, you should carry out or commission your own inspection of the property.
Copyright © BleuPlan

EPC







35a St Georges Road, London,
SE1 6EW
+44 (0) 207 401 2020

<https://globalhouseestates.com>

Level 24, Lee Garden One,
33 Hysan Ave, Causeway Bay,
Hong Kong
+852 3963 8411