

0247 401 2020 | [enquiries@globalhousestates.com](mailto:enquiries@globalhousestates.com)

## ELLIOTTS ROW, ELEPHANT AND CASTLE, LONDON

£403.00



FOR LET



- One bedroom
- Modern flat within Victorian Conversion
- First floor
- Modern kitchen and bathroom
- 1 minute from Elephant and Castle tube station



## Property Description

New to the market is this modern and spacious one bedroom apartment located on the first floor within a Victorian conversion just one minute walk from Elephant and Castle tube station. The property comprises open plan kitchen reception with wood floors, bay window and high gloss integrated kitchen with dishwasher and large fridge freezer, double bedroom with fitted wardrobes and a bright and modern bathroom with shower over bath. Located just one minute from Elephant and Castle tube station with excellent transport links into Central London and good local amenities.

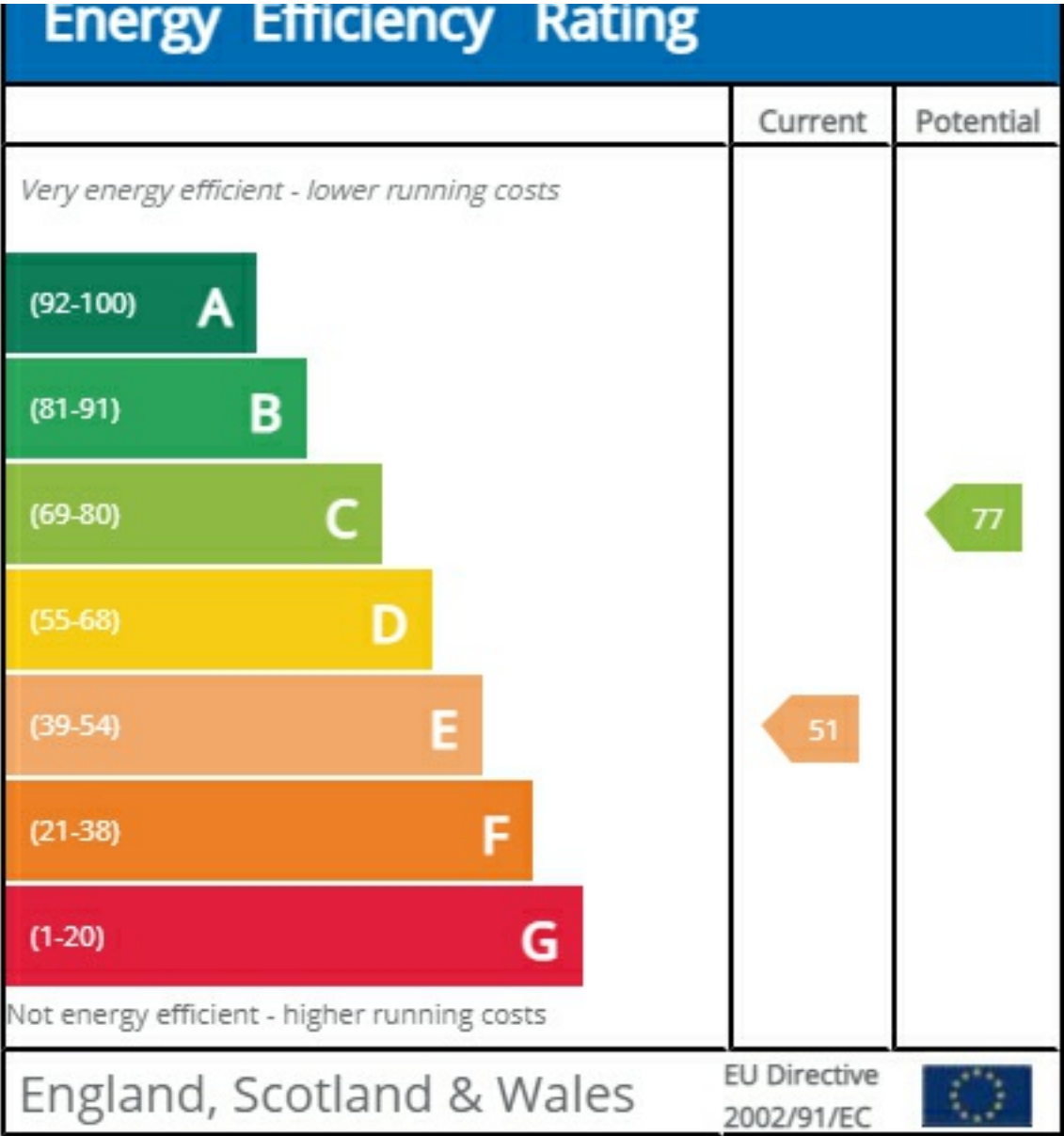
## Viewing

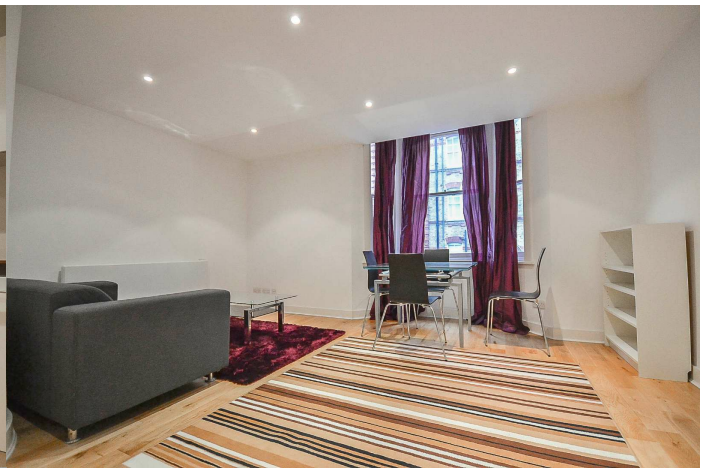
Please contact our Global House Estates Ltd Office on 0207 401 2020 if you wish to arrange a viewing appointment for this property or require further information.

## Disclaimer

This website provides information about buying, selling, renting UK property. The information is from reliable sources, but we can't guarantee that it's always accurate. There may be mistakes or changes in the information, such as price, availability, leases, or financing. The square footage is also an estimate and should be confirmed by a professional architect or engineer.

EPC





35a St Georges Road, London,  
SE1 6EW  
+44 (0) 207 401 2020

<https://globalhouseestates.com>

Level 24, Lee Garden One,  
33 Hysan Ave, Causeway Bay,  
Hong Kong  
+852 3963 8411