

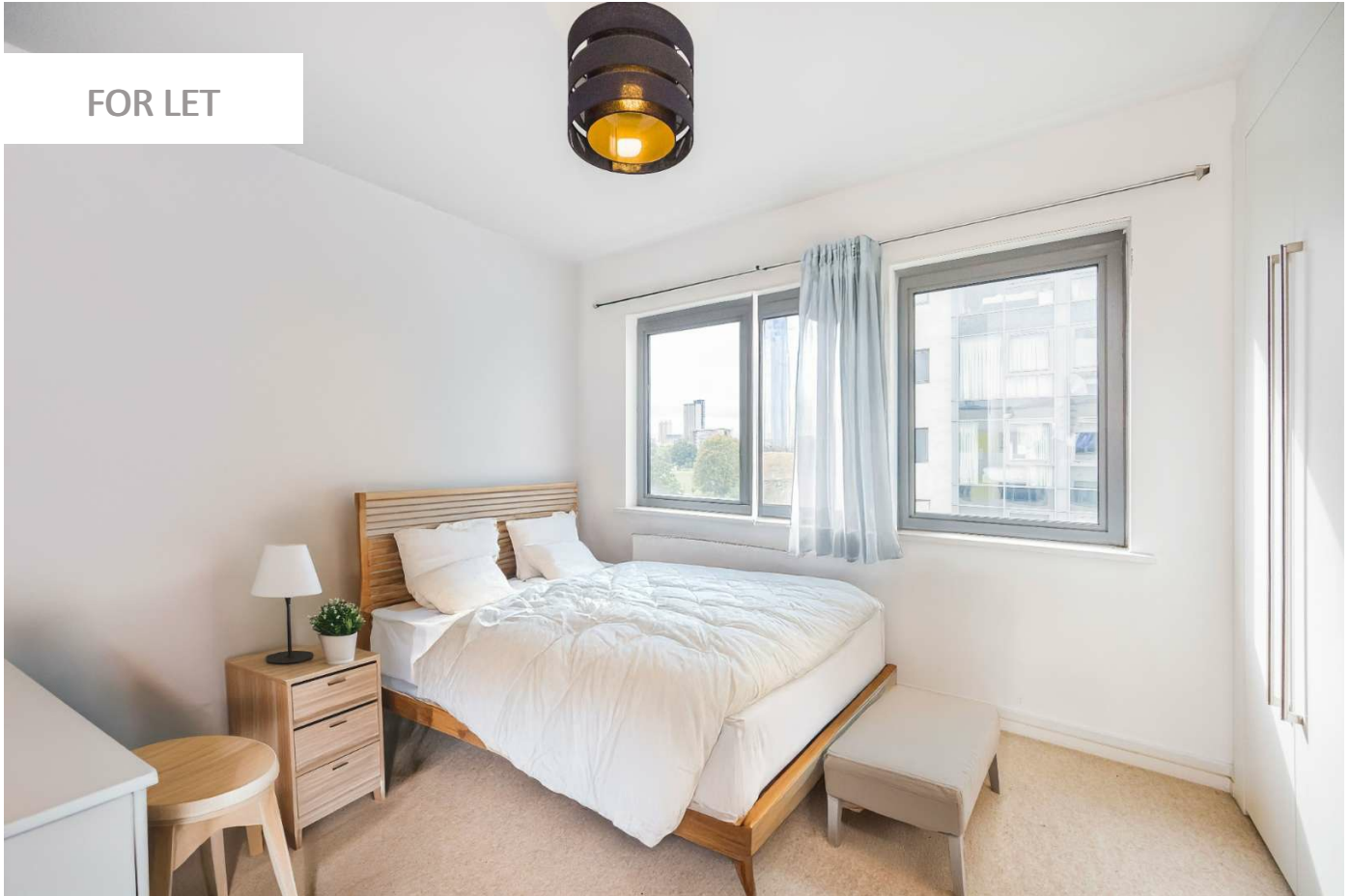
0247 401 2020 | enquiries@globalhouseestates.com

WERNER COURT, LIMEHOUSE CUT, LONDON

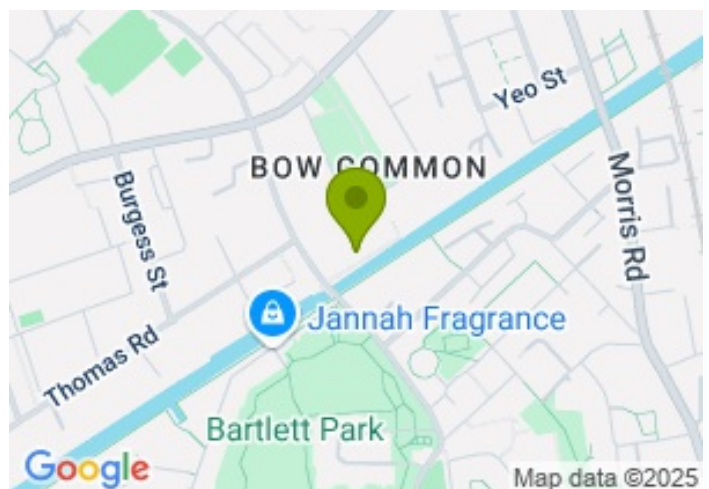
£542.31



FOR LET



- Two Bedroom Apartment
- 5th Floor
- Heating Included In The Rent
- Private Balcony
- Open Plan Kitchen
- Concierge
- Wooden Floors
- Furnished



Property Description

Set on the 5th floor, the apartment is offered on a furnished basis and consists of a reception open planned to a space for dining, private balcony accessed via floor-to-ceiling windows, and a fully fitted kitchen with appliances. There are two double bedrooms with storage space, and modern bathroom with fitted showers, and chrome fixtures and fittings. Other benefits include wood flooring in the reception and a storage/utility cupboard in the hallway. The property is located within walking distance to Devons Road and Langdon Park DLR stations, which offer direct services to Canary Wharf in less than five minutes. There are also local buses, taking you to Mile End in ten minutes.

These popular canal side apartments are situated in trendy Bow, minutes from the heart of Canary Wharf's financial centre with rapid and easy access to the City, Central and Greater London by public transport. Apartments are finished to the highest standard with stylish kitchens. Development features include bicycle storage, communal gardens/roof terrace and concierge. Heating included in the rent.

Viewing

Please contact our Global House Estates Ltd Office on 0207 401 2020 if you wish to arrange a viewing appointment for this property or require further information.

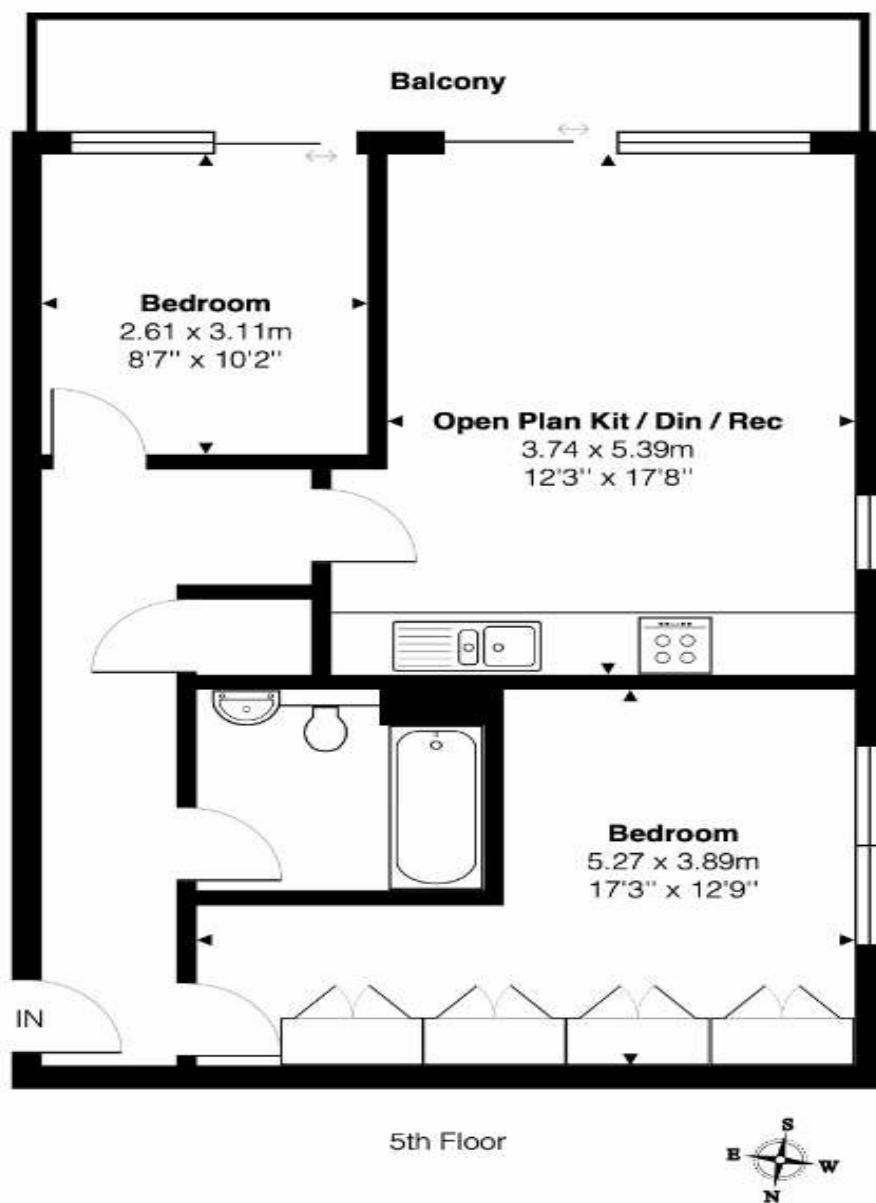
Disclaimer

This website provides information about buying, selling, renting UK property. The information is from reliable sources, but we can't guarantee that it's always accurate. There may be mistakes or changes in the information, such as price, availability, leases, or financing. The square footage is also an estimate and should be confirmed by a professional architect or engineer.

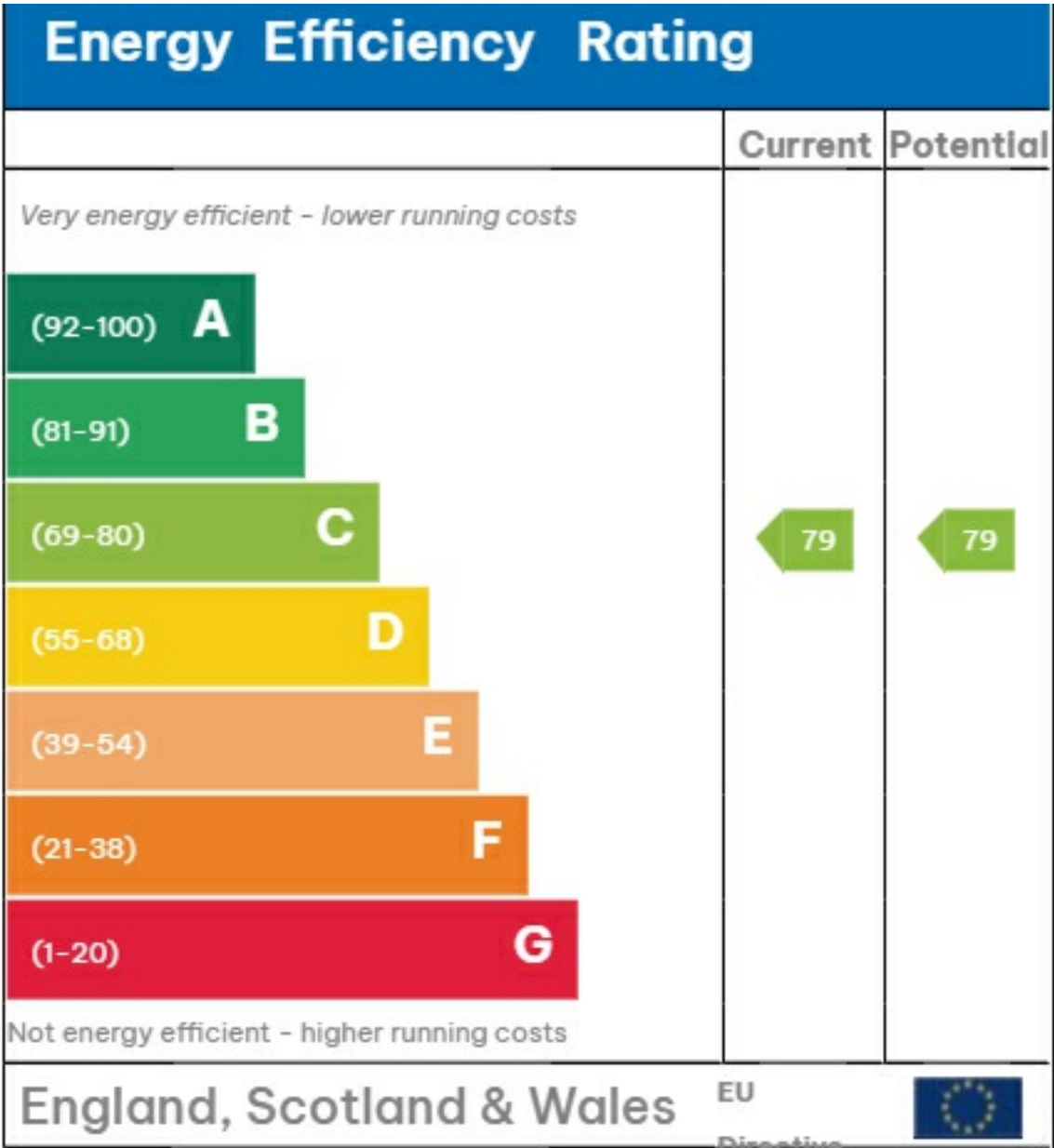
Floor plan

Werner Court, E3

Total Area: 61.4 m² ... 661 ft² (excluding balcony)



This Floor plan is provided without warranty, of any kind.
Bespoke Plans disclaims any warranty including,
without limitation, satisfaction, quality or accuracy of any dimensions







35a St Georges Road, London,
SE1 6EW
+44 (0) 207 401 2020

<https://globalhouseestates.com>

Level 24, Lee Garden One,
33 Hysan Ave, Causeway Bay,
Hong Kong
+852 3963 8411