

0247 401 2020 | enquiries@globalhouseestates.com

55 GREAT EASTERN ROAD, STRATFORD, LONDON

£519.00



FOR LET



- One bedroom 15th floor modern apartment
- Light and spacious with wonderful views
- Residents gym and 36th floor roof terrace
- Outstanding shopping and transport nearby
- 24 hour building concierge



Property Description

A stunning 15th floor one bedroom apartment within this striking tower in Stratford. The property is filled with natural light and has a smart integrated kitchen open plan to the living room, luxury bathroom, bedroom with built in wardrobe space and a very useful storage cupboard. There are fantastic views towards the Olympic Park and Westfield Shopping centre. The building offers a 36th floor residents terrace, sky lounge and gymnasium.

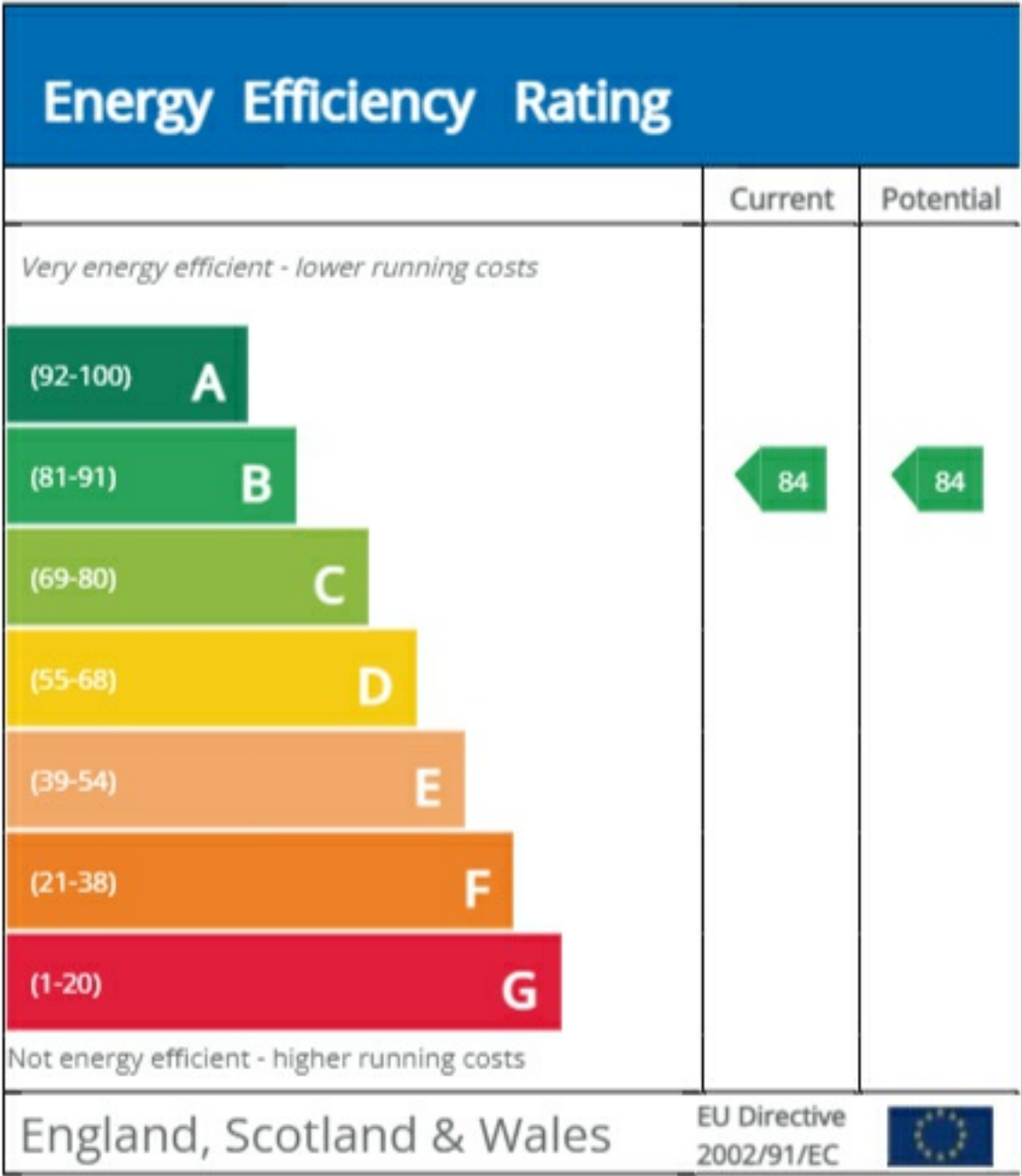
The apartment is available now and located a short stroll from Stratford Underground, Rail and DLR Station; offering swift transport services across London and beyond. You are served by outstanding shopping and leisure facilities in the nearby Westfield and Stratford Shopping Centre.

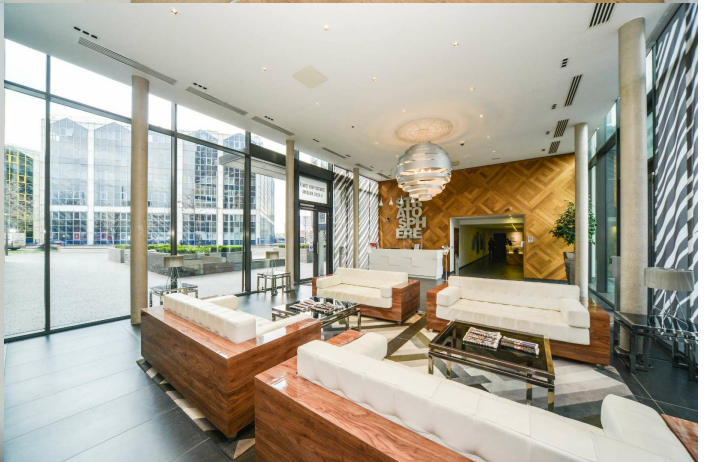
Viewing

Please contact our Global House Estates Ltd Office on 0207 401 2020 if you wish to arrange a viewing appointment for this property or require further information.

Disclaimer

This website provides information about buying, selling, renting UK property. The information is from reliable sources, but we can't guarantee that it's always accurate. There may be mistakes or changes in the information, such as price, availability, leases, or financing. The square footage is also an estimate and should be confirmed by a professional architect or engineer.







35a St Georges Road, London,
SE1 6EW
+44 (0) 207 401 2020

<https://globalhouseestates.com>

Level 24, Lee Garden One,
33 Hysan Ave, Causeway Bay,
Hong Kong
+852 3963 8411