

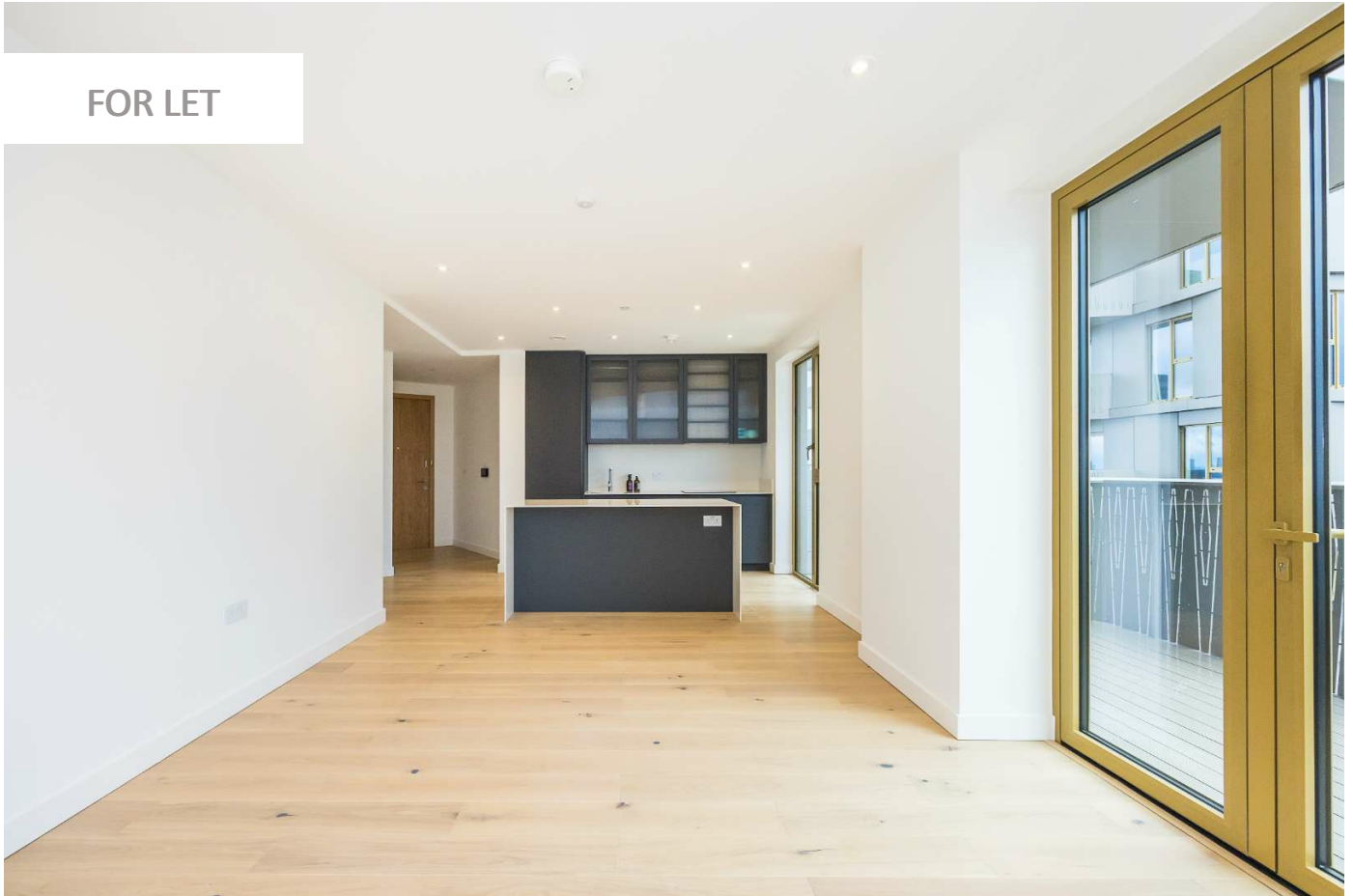
0247 401 2020 | [enquiries@globalhouseestates.com](mailto:enquiries@globalhouseestates.com)

**1 ASHLEY ROAD, TOTTENHAM HALE, LONDON**

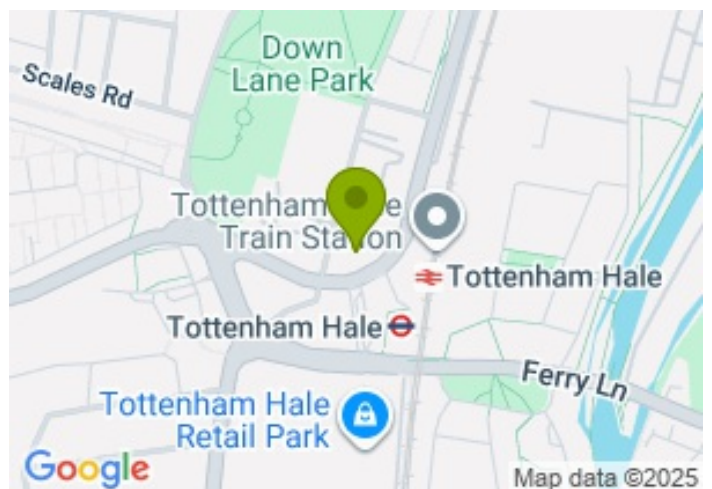
£615.00



FOR LET



- Two double bedroom, brand new apartment
- Two bathrooms
- 24 hour concierge, resident lounges and terraces
- Moments from Tottenham Hale Underground Station
- High quality interior with underfloor heating
- Private balcony



## Property Description

A stunning, modern, two double bedroom, two bathroom apartment within this superb new development in Tottenham Hale. This is a spacious and particularly bright apartment, with pleasant south easterly views (from the 9th floor) from it's private balcony. The interior offers a high quality, stylish finish with an integrated kitchen, Bosch appliances, kitchen island / breakfast bar and kitchen island / breakfast bar. There is a large reception room with engineered wood floors, principal bedroom with built in wardrobe space, ensuite shower room, further double bedroom and a luxurious bathroom. Practicalities are taken care of with a large utility cupboard housing the washer dryer and further storage space.

The development offers a 24 hour concierge, residents lounges and two terraces, bicycle storage and is moments from Tottenham Hale Underground and Rail Station. The development forms part of a brand-new neighbourhood which once complete will have retail, co-working and office spaces, a health centre, play fields and a landscaped public square. The development is close to the River Lea and Walthamstow Wetlands, a unique urban wildlife reserve of international importance. The reserve has 10 water reservoirs with fantastic fitness, cycling and hiking facilities accessible for all seasons.

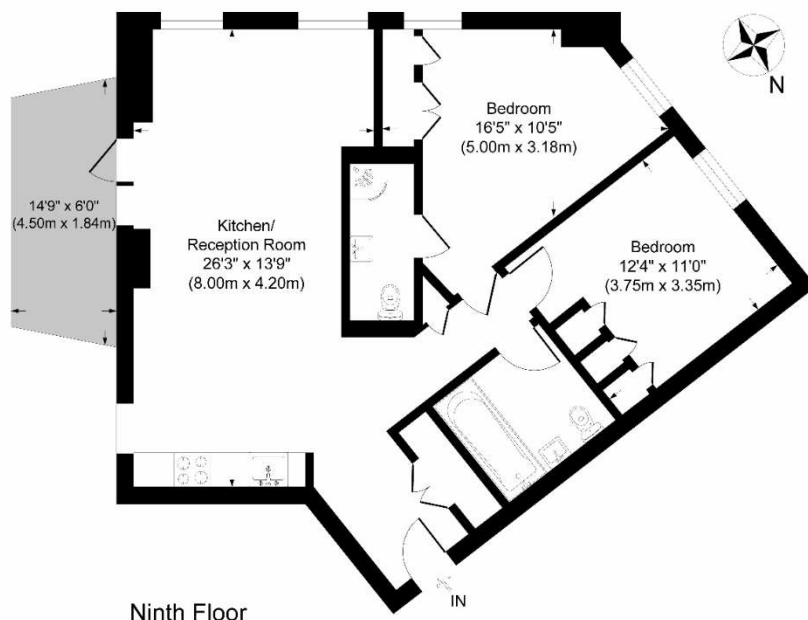
## Viewing

Please contact our Global House Estates Ltd Office on 0207 401 2020 if you wish to arrange a viewing appointment for this property or require further information.

## Disclaimer

This website provides information about buying, selling, renting UK property. The information is from reliable sources, but we can't guarantee that it's always accurate. There may be mistakes or changes in the information, such as price, availability, leases, or financing. The square footage is also an estimate and should be confirmed by a professional architect or engineer.

# Floor plan



## Ashley Road

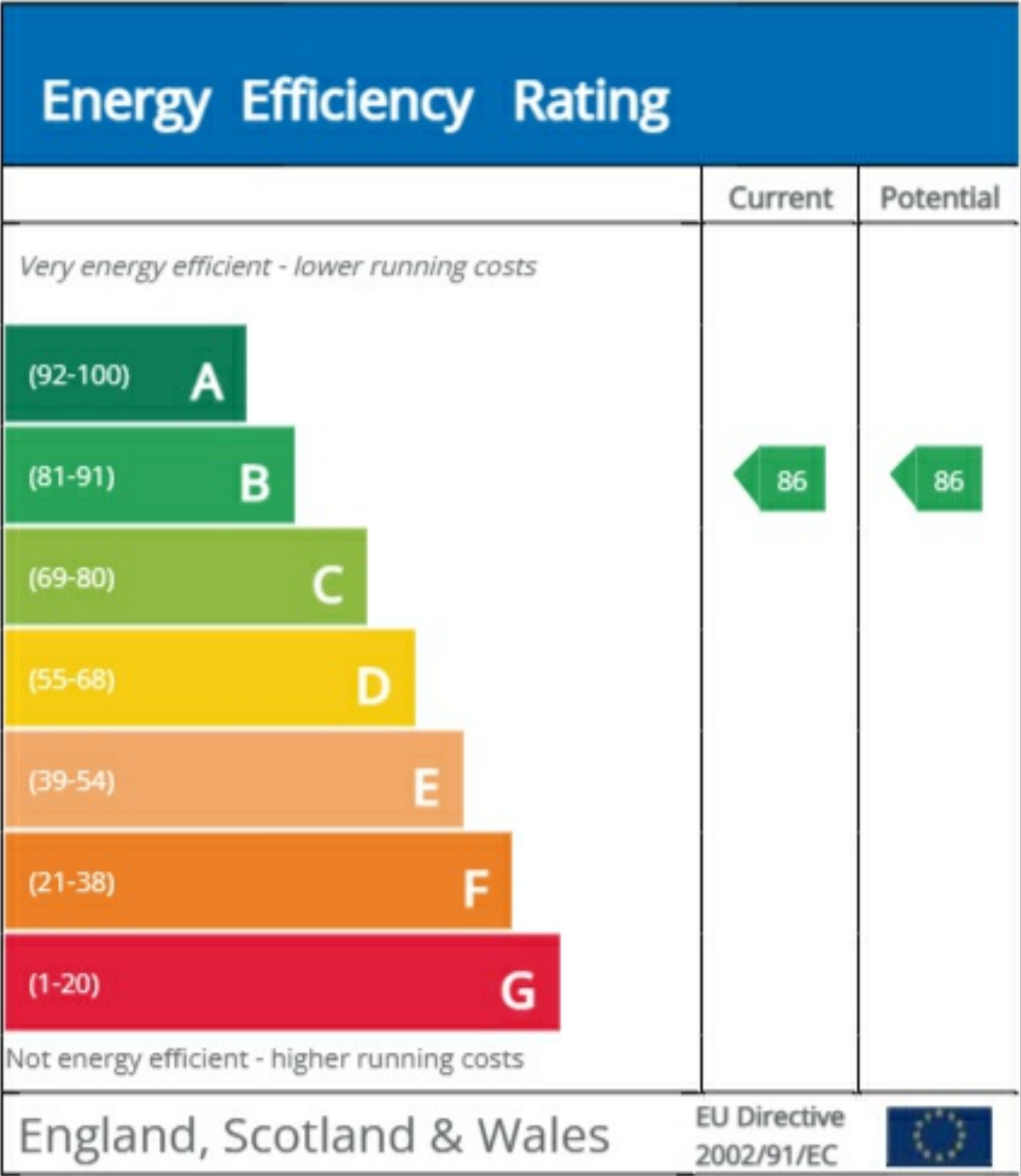
Approximate Gross Internal Area  
Total = 79.4 sq m / 855 sq ft

This plan is for layout guidance only. Not drawn to scale unless stated. Windows and door openings are approximate. Whilst every care is taken in the preparation of this plan, please check all dimensions, shapes and compass bearings before making any decisions reliant upon them.

powered by:

THE360IMAGE

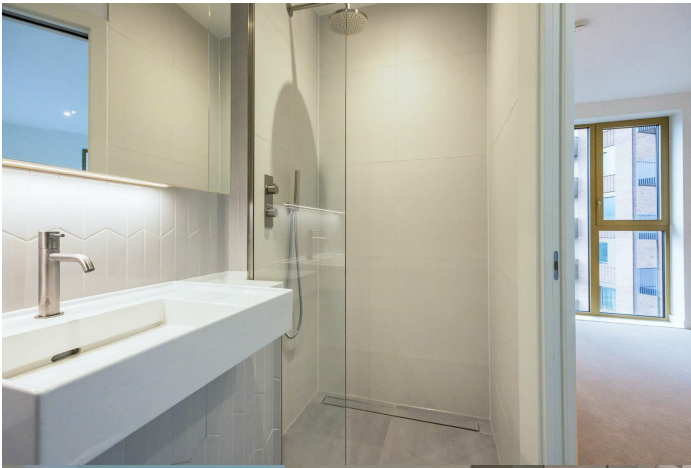
www.the360image.co.uk











35a St Georges Road, London,  
SE1 6EW  
+44 (0) 207 401 2020

<https://globalhouseestates.com>

Level 24, Lee Garden One,  
33 Hysan Ave, Causeway Bay,  
Hong Kong  
+852 3963 8411