

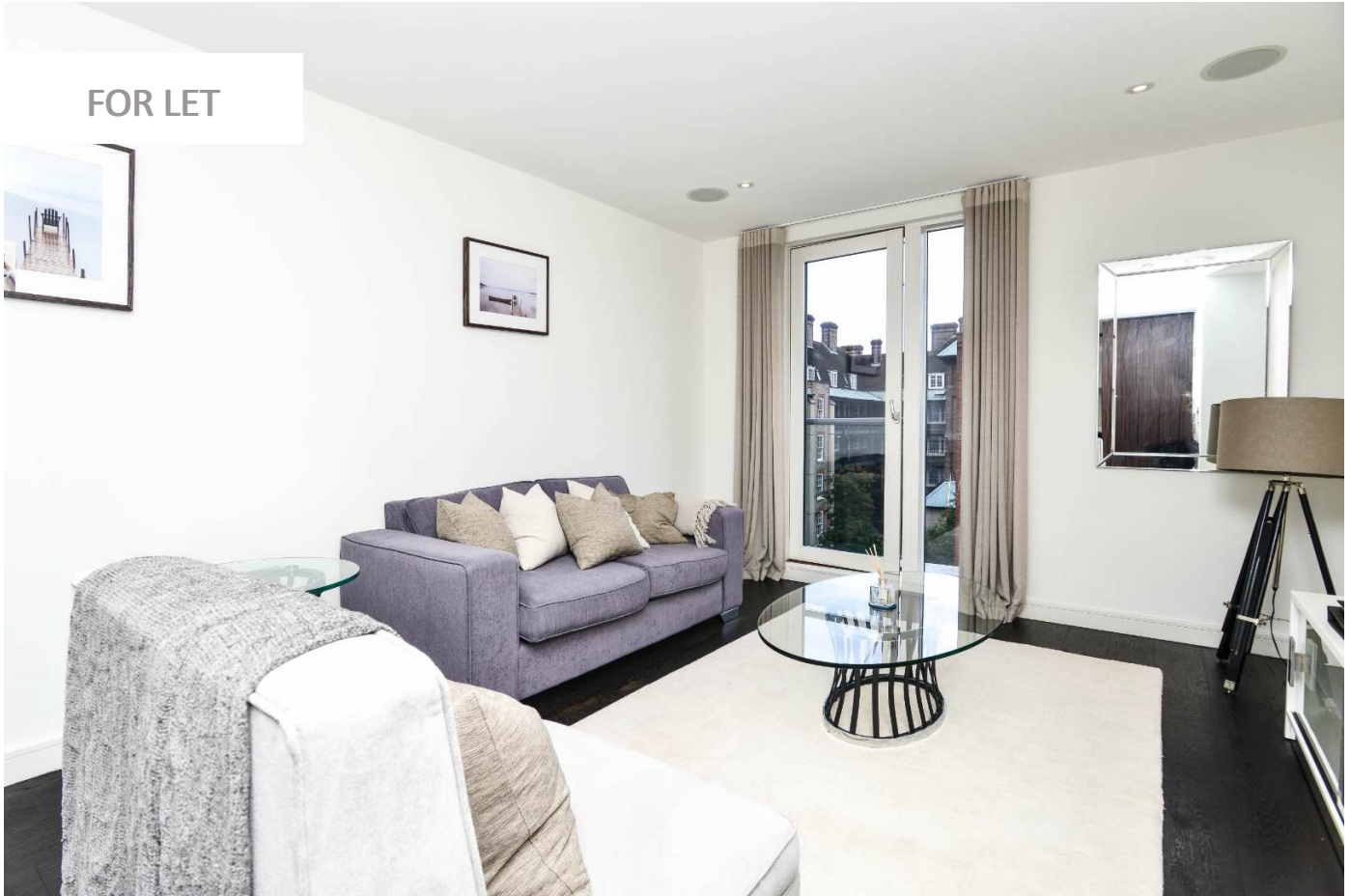
0247 401 2020 | [enquiries@globalhouseestates.com](mailto:enquiries@globalhouseestates.com)

## 2 GATLIFF ROAD, CHELSEA, LONDON

£634.62



FOR LET



- One bedroom third floor apartment
- Solid wood floors and underfloor heating
- Ample storage throughout
- 565 square ft. of smart and contemporary living space
- Residents gym, spa and on site concierge
- Superbly located near to Sloane Square, The Kings Road and Battersea Park



## Property Description

A delightful one bedroom, third floor apartment within the ever popular Grosvenor Waterside development. The property is well proportioned with ample storage throughout and high quality fixtures and fittings. There is solid wood flooring, a sleek integrated kitchen with 'island' dining area, smart bathroom, a very good size bedroom with built in wardrobes and a spacious reception room - both of these rooms benefit from floor to ceiling windows and Juliet balconies. There is a residents gym and spa and also a restaurant and cafe on site, plus a recently opened Sainsbury's supermarket. The location is superb, near to both Sloane Square, The Kings Road and Victoria as well as the Thames and open space of Battersea Park.

## Viewing

Please contact our Global House Estates Ltd Office on 0207 401 2020 if you wish to arrange a viewing appointment for this property or require further information.

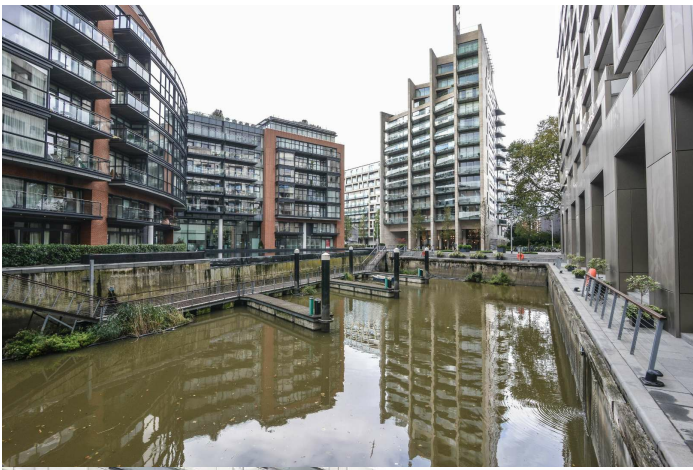
## Disclaimer

This website provides information about buying, selling, renting UK property. The information is from reliable sources, but we can't guarantee that it's always accurate. There may be mistakes or changes in the information, such as price, availability, leases, or financing. The square footage is also an estimate and should be confirmed by a professional architect or engineer.









35a St Georges Road, London,  
SE1 6EW  
+44 (0) 207 401 2020

<https://globalhouseestates.com>

Level 24, Lee Garden One,  
33 Hysan Ave, Causeway Bay,  
Hong Kong  
+852 3963 8411