

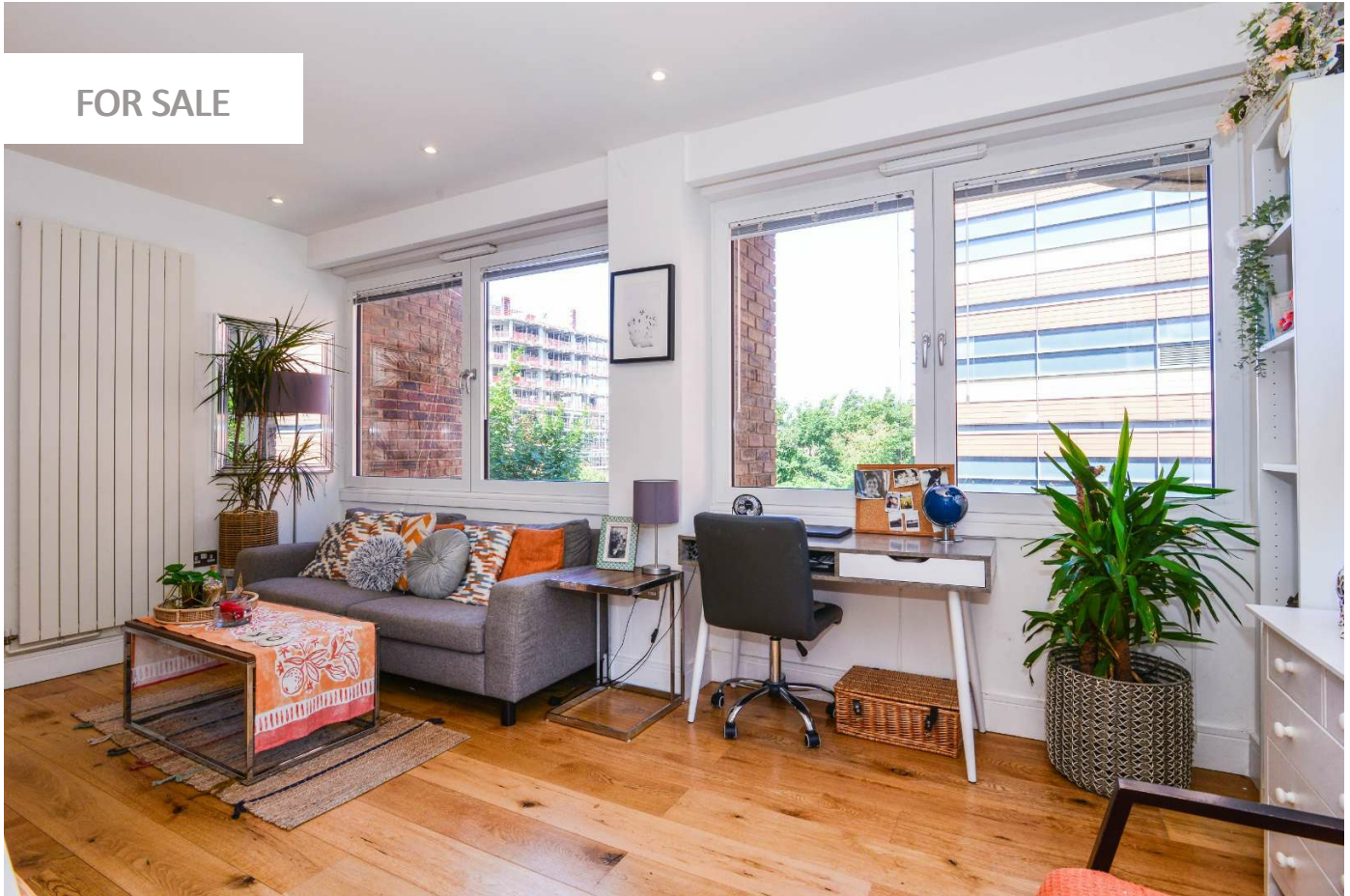
0247 401 2020 | enquiries@globalhouseestates.com

68 MOLESWORTH STREET, LEWISHAM, LONDON

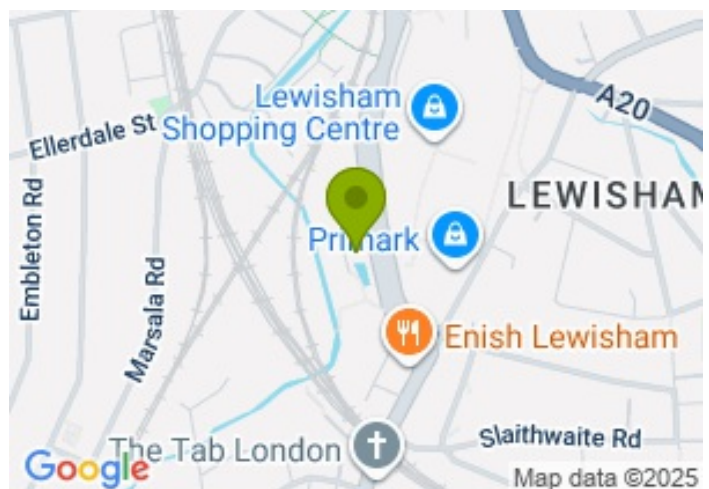
£300,000.00



FOR SALE



- One bedroom second floor apartment
- Private balcony and communal roof garden
- Modern Galliard Homes development
- Private parking space included
- Just 5 minute walk to Lewisham Station
- Concierge



Property Description

This one-bedroom apartment is set within an impressive Galliard Homes development in the heart of Lewisham, offering a perfect blend of contemporary style and convenient urban living. Positioned just moments from Lewisham Station, the property enjoys excellent transport links, presenting a fantastic opportunity for first-time buyers and investors alike.

Upon entering, you are welcomed into a bright and well-proportioned interior, featuring sleek wood flooring and a practical storage space along the hallway. The dual-aspect reception room is flooded with natural light, enhanced by double glazed windows that ensure year-round comfort and energy efficiency. The stylish, fully integrated kitchen is designed with modern living in mind, while the spacious bedroom offers ample wardrobe space and opens directly onto a private balcony—an ideal spot for relaxation. A three-piece contemporary bathroom completes the property.

Further benefits include a concierge, a dedicated parking space, and access to beautifully landscaped communal gardens and a roof terrace, all within a secure and well-maintained development overlooking the picturesque Mill Pond and River Ravensbourne.

Ideally located just a 5-minute walk from Lewisham Station, the property provides swift connections to London Bridge in just 8 minutes, with additional links across London via DLR and National Rail services. Residents will also enjoy the vibrant mix of local cafés, shops, and green spaces that make Lewisham one of South East London's most dynamic neighbourhoods.

Contact us today to arrange a viewing.

Length of lease: Approximately 988 years remaining

Service charge: circa £4,066 per annum

Ground rent: £350.00 per annum

All data and information set forth on this website regarding real property, for sale, purchase, rental and/or financing, are from sources regarded as reliable. No warranties are made as to the accuracy of any descriptions and/or other details and such information is subject to errors, omissions, changes of price, tenancies, commissions, prior sales, leases or financing, or withdrawal without notice. Square footages are approximate and may be verified by consulting a professional architect or engineer.

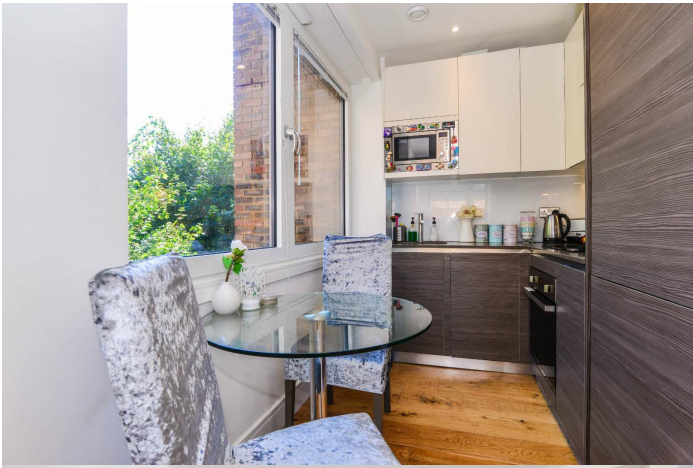
Viewing

Please contact our Global House Estates Ltd Office on 0207 401 2020 if you wish to arrange a viewing appointment for this property or require further information.

Disclaimer

This website provides information about buying, selling, renting UK property. The information is

from reliable sources, but we can't guarantee that it's always accurate. There may be mistakes or changes in the information, such as price, availability, leases, or financing. The square footage is also an estimate and should be confirmed by a professional architect or engineer.





35a St Georges Road, London,
SE1 6EW
+44 (0) 207 401 2020

<https://globalhouseestates.com>

Level 24, Lee Garden One,
33 Hysan Ave, Causeway Bay,
Hong Kong
+852 3963 8411