

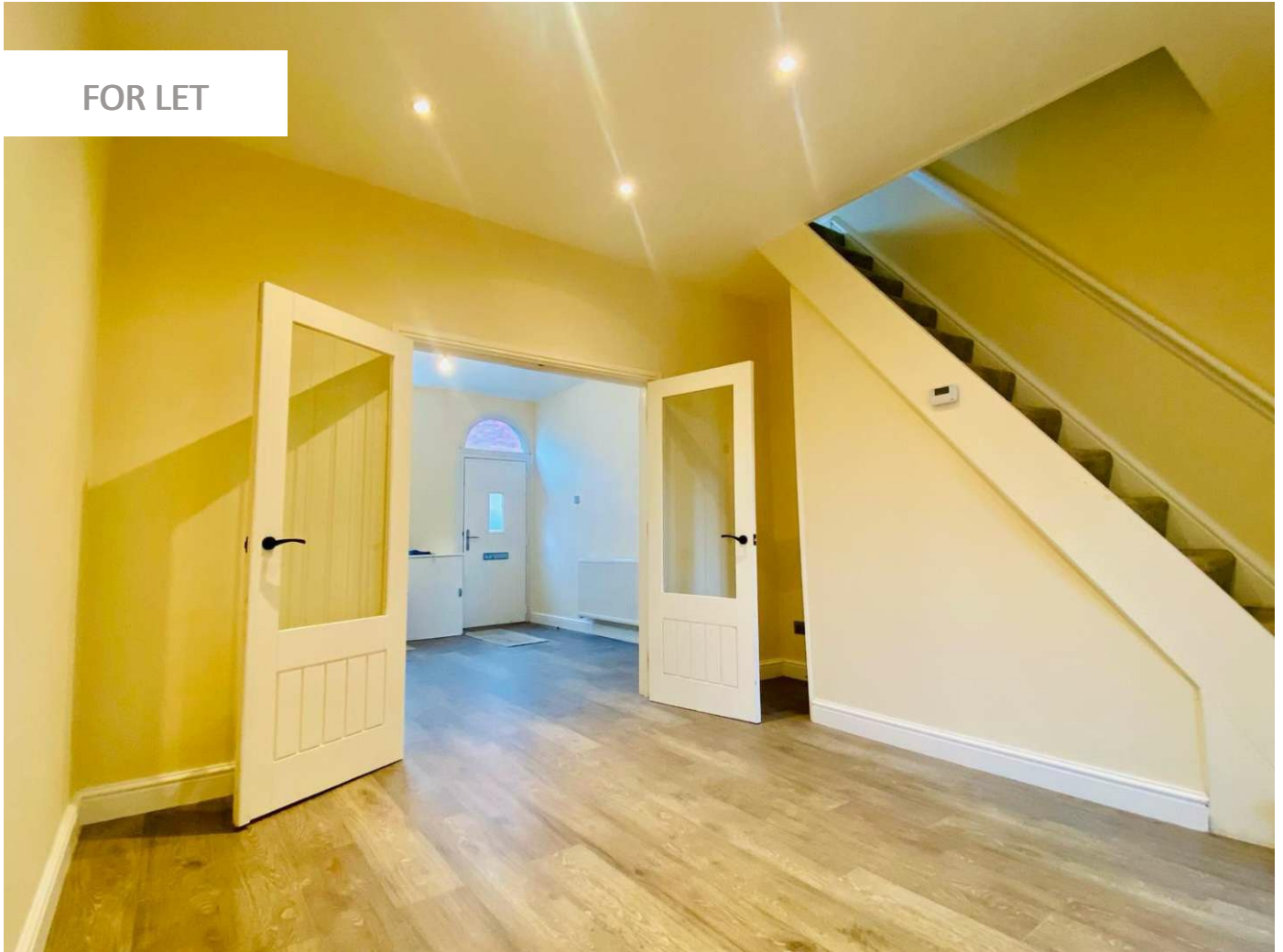
0247 401 2020 | enquiries@globalhouseestates.com

GARDEN STREET, ECCLES, MANCHESTER

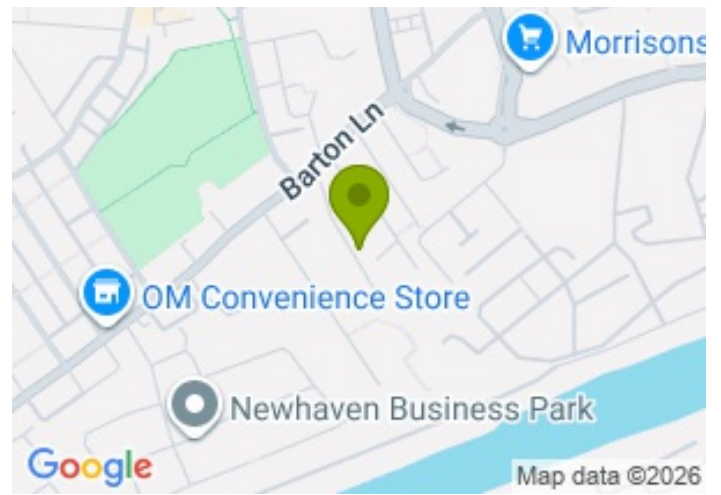
£1,050.00



FOR LET



- Refurbished home
- EPC Rating C
- End Terence
- Close to Eccles town centre
- Excellent transport links
- Available from 01Mar26



Property Description

Global House Estates is delighted to present this spacious two bedroom end terrace house in Eccles. The beautiful property is refurbished to a high standard.

Available immediately on an unfurnished basis. On the ground floor there are two reception rooms, which are separated by double doors that can be closed to create two separate rooms, or opened to create a large entertaining space.

The property also benefits from an extended stylish modern fitted kitchen with hob, exhaust hood, oven, fridge freezer and washing machine.

On the first floor, you will find two bedrooms and a fitted modern bathroom. This accommodation is ideal for both small families and couples looking for a comfortable and convenient living space.

The property is gas central heated and double glazed with new decor. It is well presented throughout and with great room proportions.

Located close to Eccles town centre and there is access to a wide range of amenities as well as excellent transport links including train and bus plus the Metrolink network. This property offers a fantastic opportunity to enjoy the vibrant local area and all it has to offer.

Please contact Global House Estates to arrange a viewing.

All data and information set forth on this website regarding real property, for sale, purchase, rental and/or financing, are from sources regarded as reliable. No warranties are made as to the accuracy of any descriptions and/or other details and such information is subject to errors, omissions, changes of price, tenancies, commissions, prior sales, leases or financing, or withdrawal without notice. Square footages are approximate and may be verified by consulting a professional architect or engineer.

Viewing

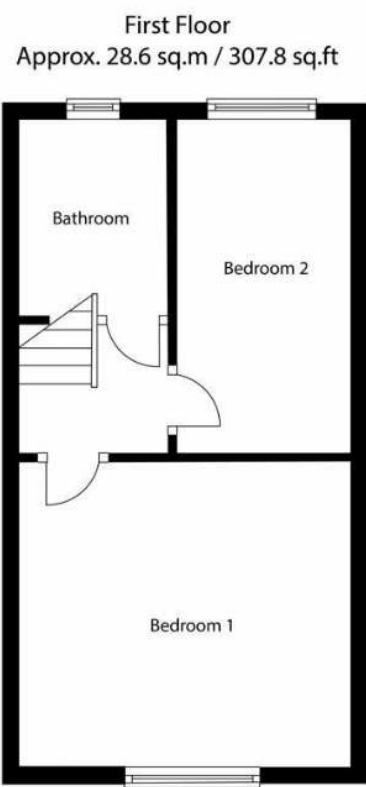
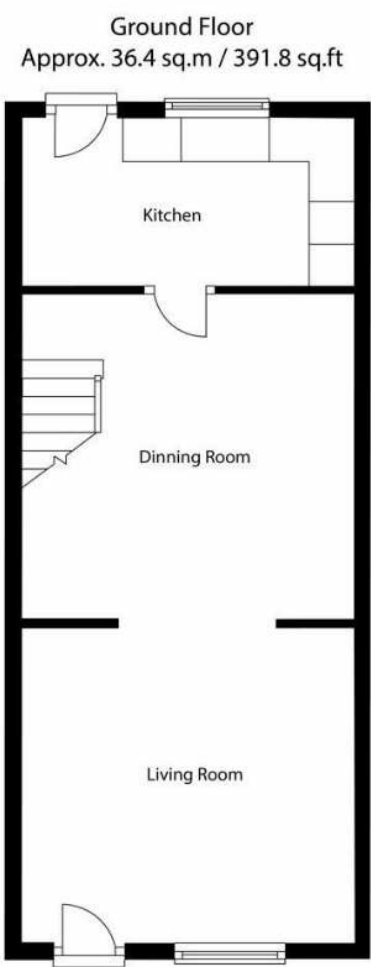
Please contact our Global House Estates Ltd Office on 0207 401 2020 if you wish to arrange a viewing appointment for this property or require further information.

Disclaimer

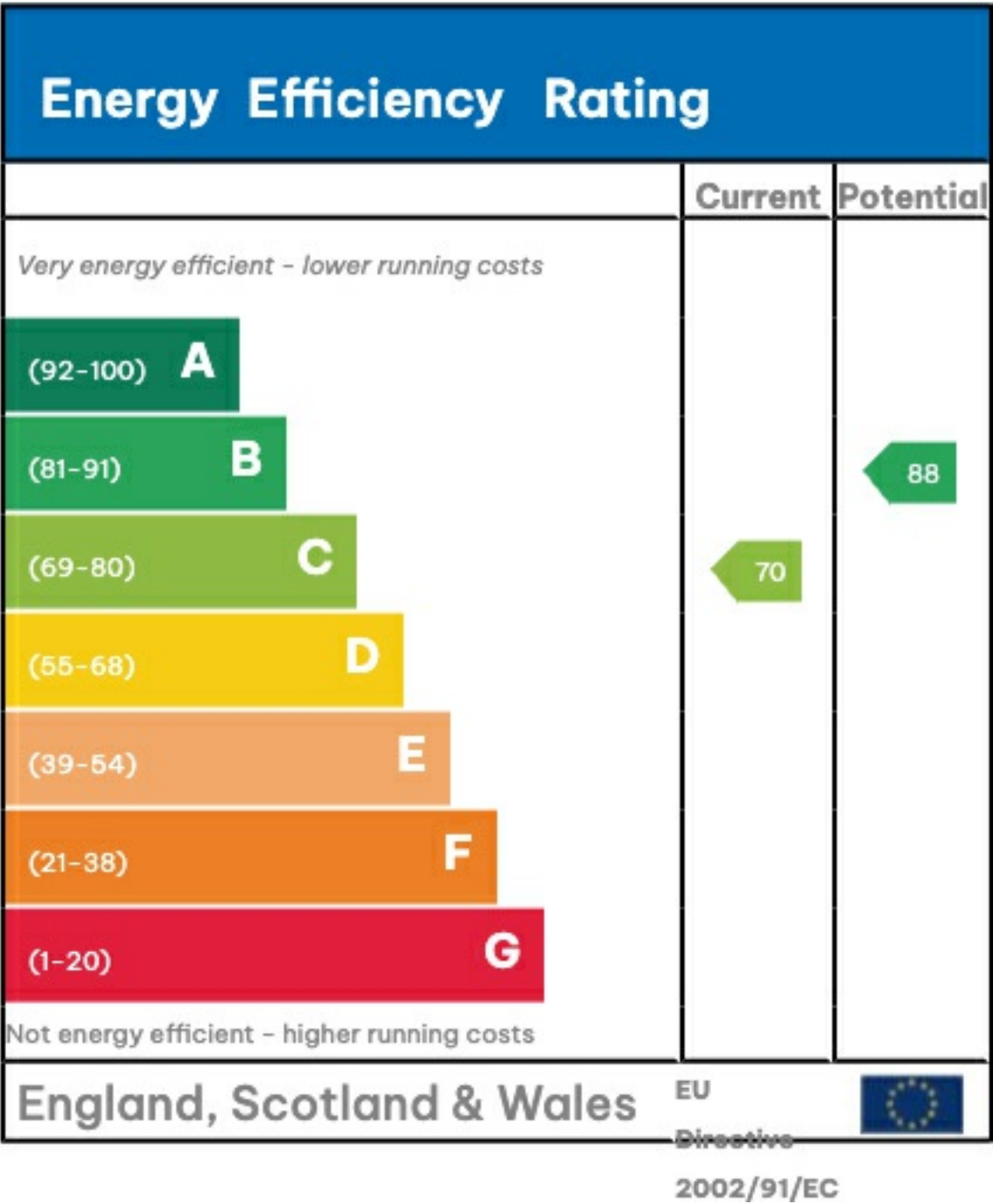
This website provides information about buying, selling, renting UK property. The information is from reliable sources, but we can't guarantee that it's always accurate. There may be mistakes or changes in the information, such as price, availability, leases, or financing. The square footage is also an estimate and should be confirmed by a professional architect or engineer.

Floor plan

Total Area: Approx. 65 sq. m / 699.6 sq. ft



This floor plan is for illustrative purposes only. It is not drawn to scale. Any measurements, floor areas (including any total floor area), openings and orientation are approximate. No details are guaranteed, they cannot be relied upon for any purpose and they do not form part of any agreement. No liability is taken for any error, omission or misstatement. A party must rely upon its own inspection(s).







35a St Georges Road, London,
SE1 6EW
+44 (0) 207 401 2020

<https://globalhouseestates.com>

Level 24, Lee Garden One,
33 Hysan Ave, Causeway Bay,
Hong Kong
+852 3963 8411