

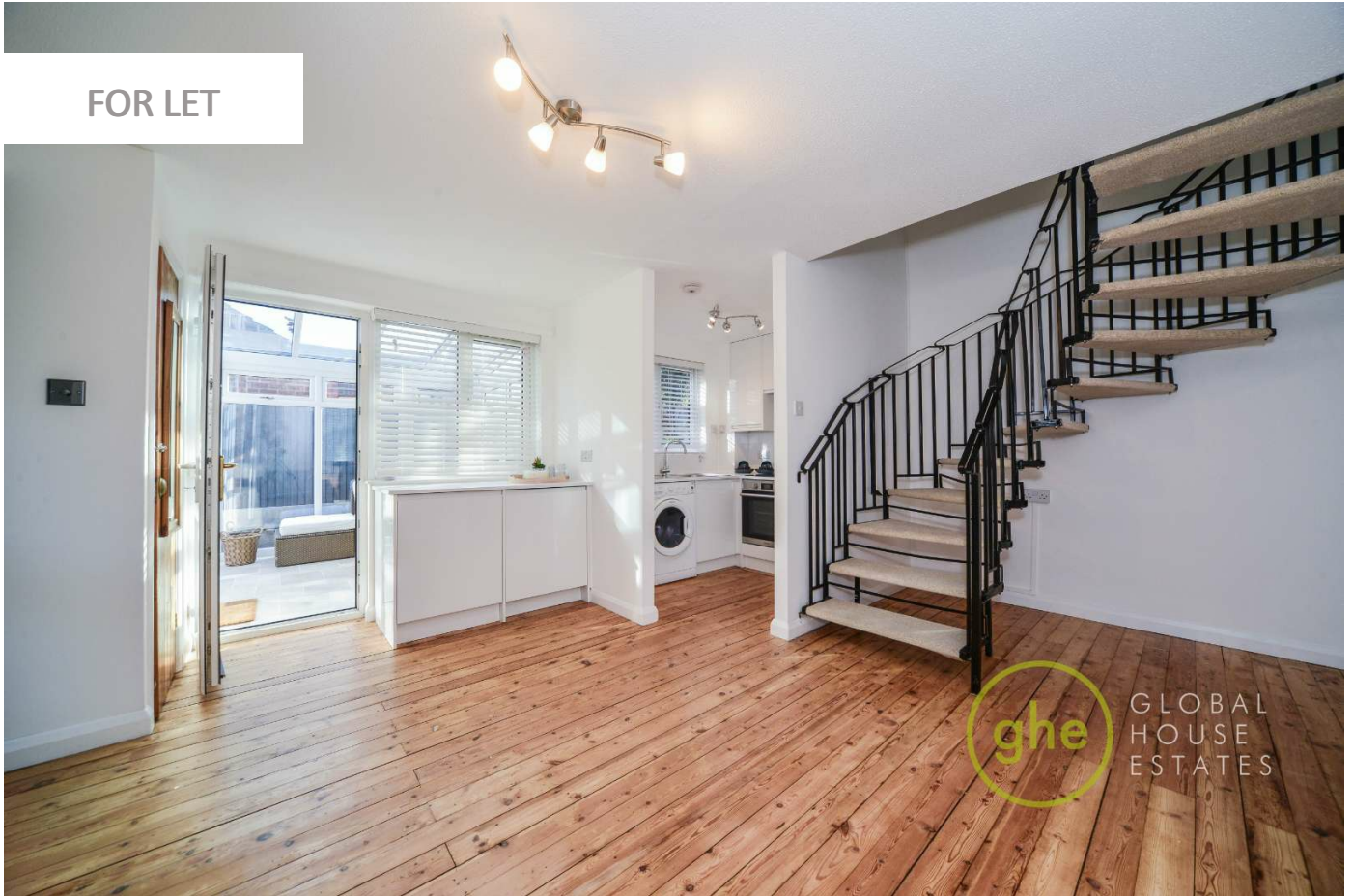
0247 401 2020 | enquiries@globalhouseestates.com

TILLER ROAD, ISLE OF DOGS, LONDON

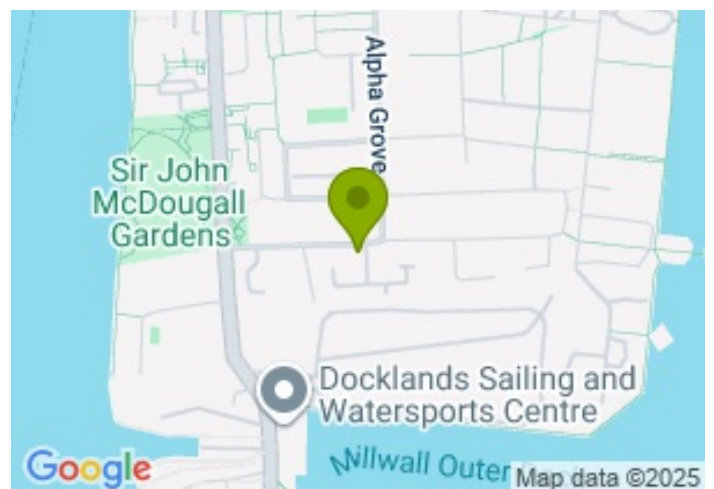
£426.92



FOR LET



- One Bedroom House
- Private Garden
- Wooden Floors
- Off Street Parking
- Semi Open Plan Kitchen
- Short Walk to Cross Harbour
- Furnished
- Brand New Conservatory Perfect For Home Working



Propety Description

Set in a pleasant cul-de-sac, this refurbished bright one bedroom house set in a secure development benefits from a spacious interior, private garden and brand new conservatory, wood floors and off street parking. Set over two floors the property comprises a generously sized reception room, with semi open plan contemporary kitchen. Bedroom with large wardrobe space , modern bathroom. Tiller road is a quiet residential area close to the excellent range of shops, bars and restaurants of Canary Wharf and the green open spaces of Island Gardens and Mudchute Park. Transport links close to the property include Cross Harbour and a short 10 minute walk to canary wharf station. Also the added bonus of a brand new conservatory perfect for home working.

Viewing

Please contact our Global House Estates Ltd Office on 0207 401 2020 if you wish to arrange a viewing appointment for this property or require further information.

Disclaimer

This website provides information about buying, selling, renting UK property. The information is from reliable sources, but we can't guarantee that it's always accurate. There may be mistakes or changes in the information, such as price, availability, leases, or financing. The square footage is also an estimate and should be confirmed by a professional architect or engineer.

EPC

