

0247 401 2020 | enquiries@globalhouseestates.com

EAST CENTRAL APARTMENTS, WALTHAMSTOW, LONDON

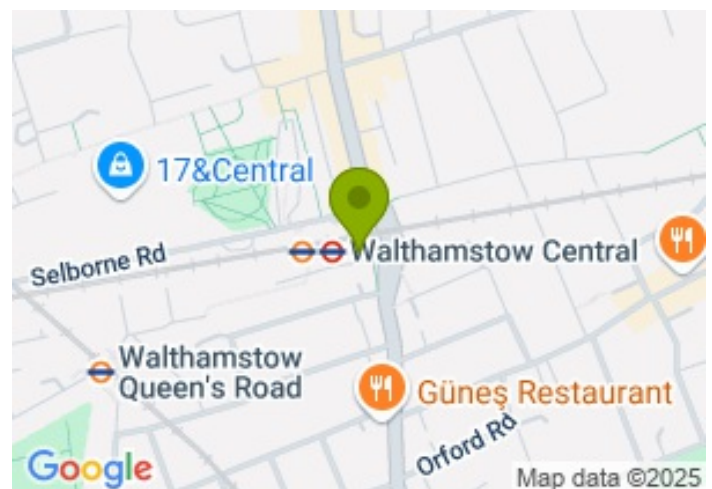
£576.92



FOR LET



- Two Bedroom Apartment
- 6th Floor
- Next to Walthamstow Central
- Two Bathroom
- Private Balcony
- Furnished
- Quick Links to Victoria & St Pancras
- Stunning Views



Property Description

luxury two bedroom apartment located next to Walthamstow Central Station. This high-specification apartment is on the sixth floor providing stunning panoramic views of the iconic London skyline from all rooms & the large south facing balcony. Superb location within easy walking distance of the bustling heart of Walthamstow Village and comprises a spacious reception room/kitchen with ample space for dining, master bedroom with fitted wardrobes and en-suite shower room, second bedroom and bathroom. Secure bicycle storage and just 3 mins down to the station for quick links to Liverpool Street, Victoria & Kings Cross St Pancras and yet no train noise in the flat.

EPC Grade B, Deposit is £2884.61 Council Tax Band C

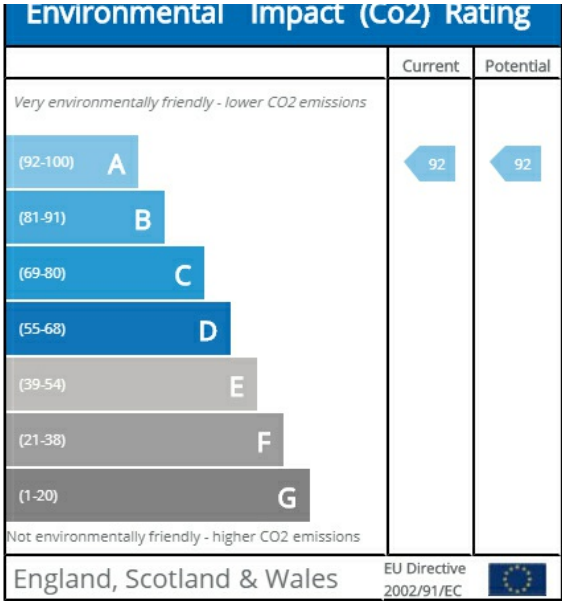
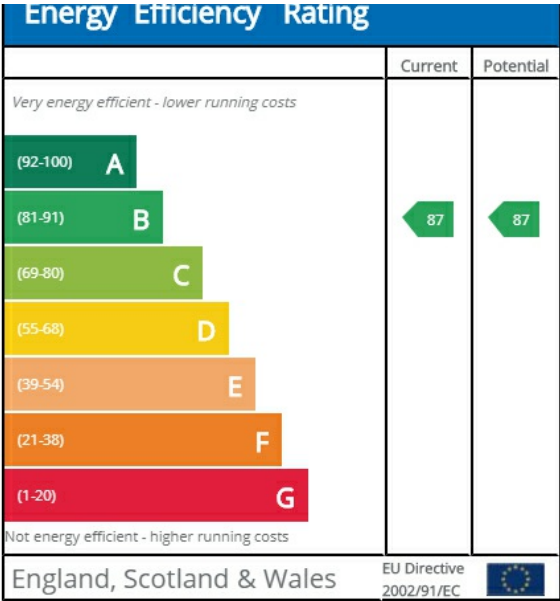
Viewing

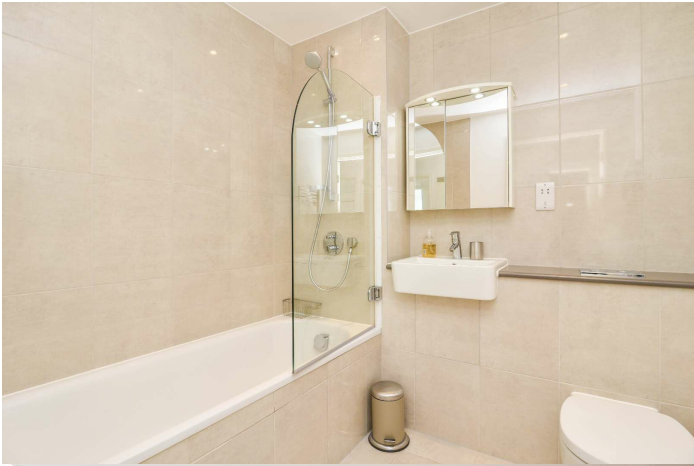
Please contact our Global House Estates Ltd Office on 0207 401 2020 if you wish to arrange a viewing appointment for this property or require further information.

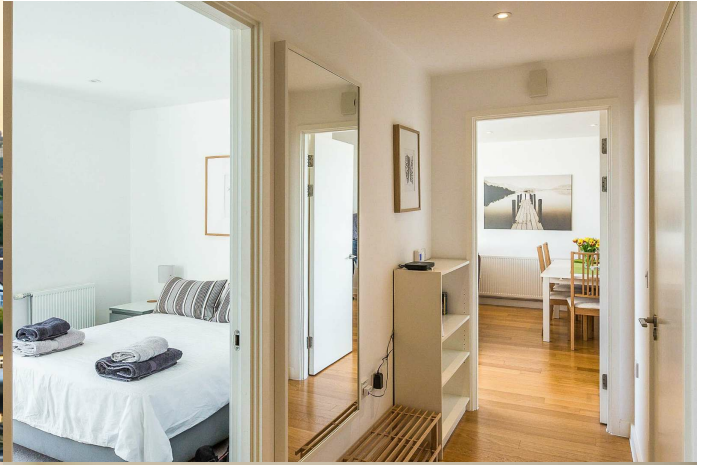
Disclaimer

This website provides information about buying, selling, renting UK property. The information is from reliable sources, but we can't guarantee that it's always accurate. There may be mistakes or changes in the information, such as price, availability, leases, or financing. The square footage is also an estimate and should be confirmed by a professional architect or engineer.

EPC









35a St Georges Road, London,
SE1 6EW
+44 (0) 207 401 2020

<https://globalhouseestates.com>

Level 24, Lee Garden One,
33 Hysan Ave, Causeway Bay,
Hong Kong
+852 3963 8411