

0247 401 2020 | enquiries@globalhouseestates.com

JQ RISE, 1 GOODMAN STREET, BIRMINGHAM, UK

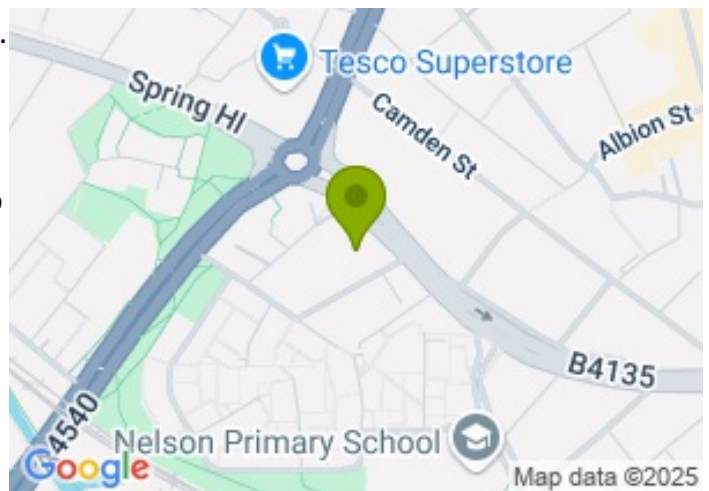
£1,250.00



FOR LET



- Furnished or unfurnished, landlord is flexible.
- First Floor connected with communal garden
- Private Balcony
- Located in B1, Jewellery Quarter and close to Birmingham city centre
- Available now!



Property Description

Gateway to the Jewellery Quarter, JQ Rise is a striking landmark tower offering extraordinary views and unrivalled city centre access. This property provides a stunning and spacious two bedroom modern luxury apartment.

JQ Rise is located just ten minutes walk to the business and financial districts of Brindley Place, Arena Central and Colmore Row. The luxury apartment features a high quality interior specification and configuration, specifically designed to cater to the rising young professional rental demand of the city centre.

The property comprises of open plan living and dining areas. The kitchen is fully integrated with dishwasher, fridge freezer, oven, hob and extractor.

The apartment is what millennials would call a 'dumbbells' style apartment, with the living and dining space in the middle and with a bedroom to each side. Both bedrooms are very generously sized with the nice communal garden view.

The master also benefits from an en-suite with shower, WC and wash hand basin. The main bathroom benefits from a bath/shower and alongside matching appliances. There is also a separate utility room which houses the washing machine.

Available immediately, this apartment is just a short walk from Birmingham city centre, making it an ideal choice for those seeking a blend of comfort and convenience in a prime location.

Contact GHE today to book a viewing!

All data and information set forth on this website regarding real property, for sale, purchase, rental and/or financing, are from sources regarded as reliable. No warranties are made as to the accuracy of any descriptions and/or other details and such information is subject to errors, omissions, changes of price, tenancies, commissions, prior sales, leases or financing, or withdrawal without notice. Square footages are approximate and may be verified by consulting a professional architect or engineer.

Viewing

Please contact our Global House Estates Ltd Office on 0207 401 2020 if you wish to arrange a viewing appointment for this property or require further information.

Disclaimer

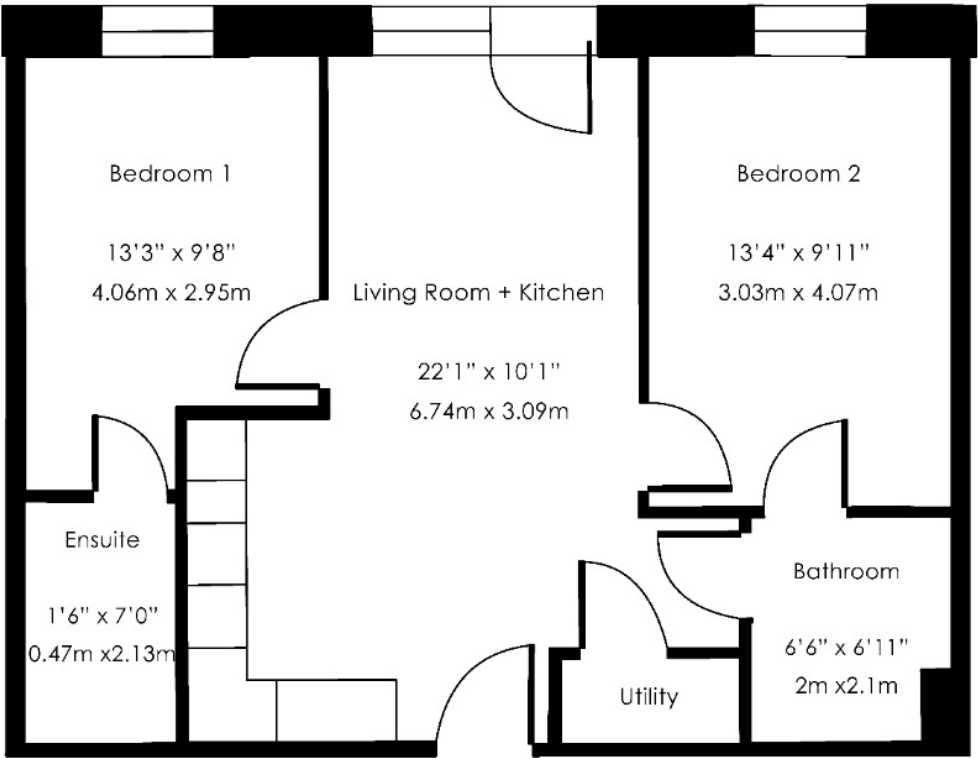
This website provides information about buying, selling, renting UK property. The information is from reliable sources, but we can't guarantee that it's always accurate. There may be mistakes or changes in the information, such as price, availability, leases, or financing. The square footage is also

an estimate and should be confirmed by a professional architect or engineer.

Floor plan

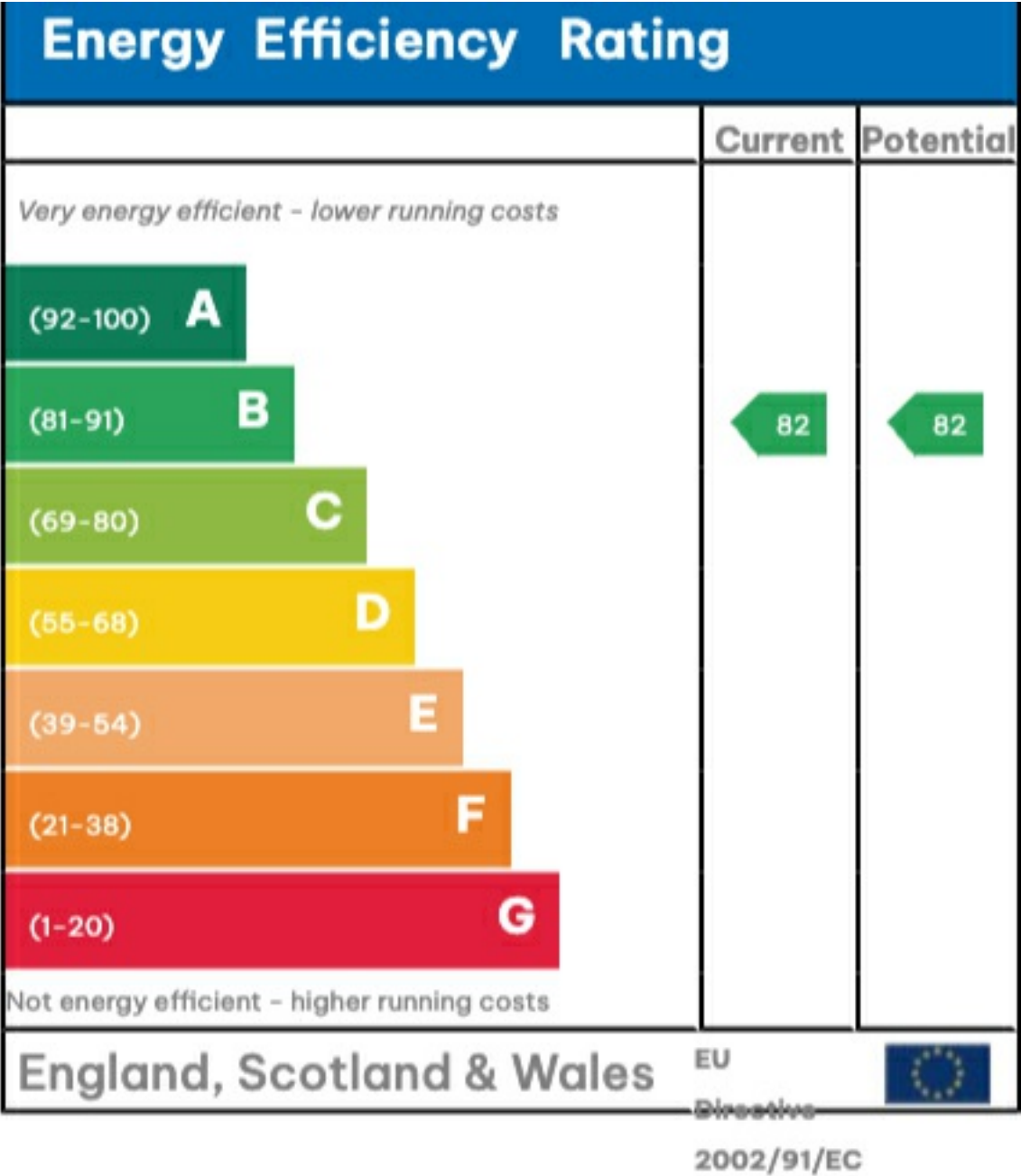
Approx. Total Area

62 m² / 667 ft²



This floor plan is for illustrative purposes only. It is not drawn to scale. Any measurements, floor areas (including any total floor area), openings and orientation are approximate. No details are guaranteed, they cannot be relied upon for any purpose and they do not form part of any agreement. No liability is taken for any error, omission or misstatement. A party must rely upon its own inspection(s).

EPC







35a St Georges Road, London,
SE1 6EW
+44 (0) 207 401 2020

<https://globalhouseestates.com>

Level 24, Lee Garden One,
33 Hysan Ave, Causeway Bay,
Hong Kong
+852 3963 8411