

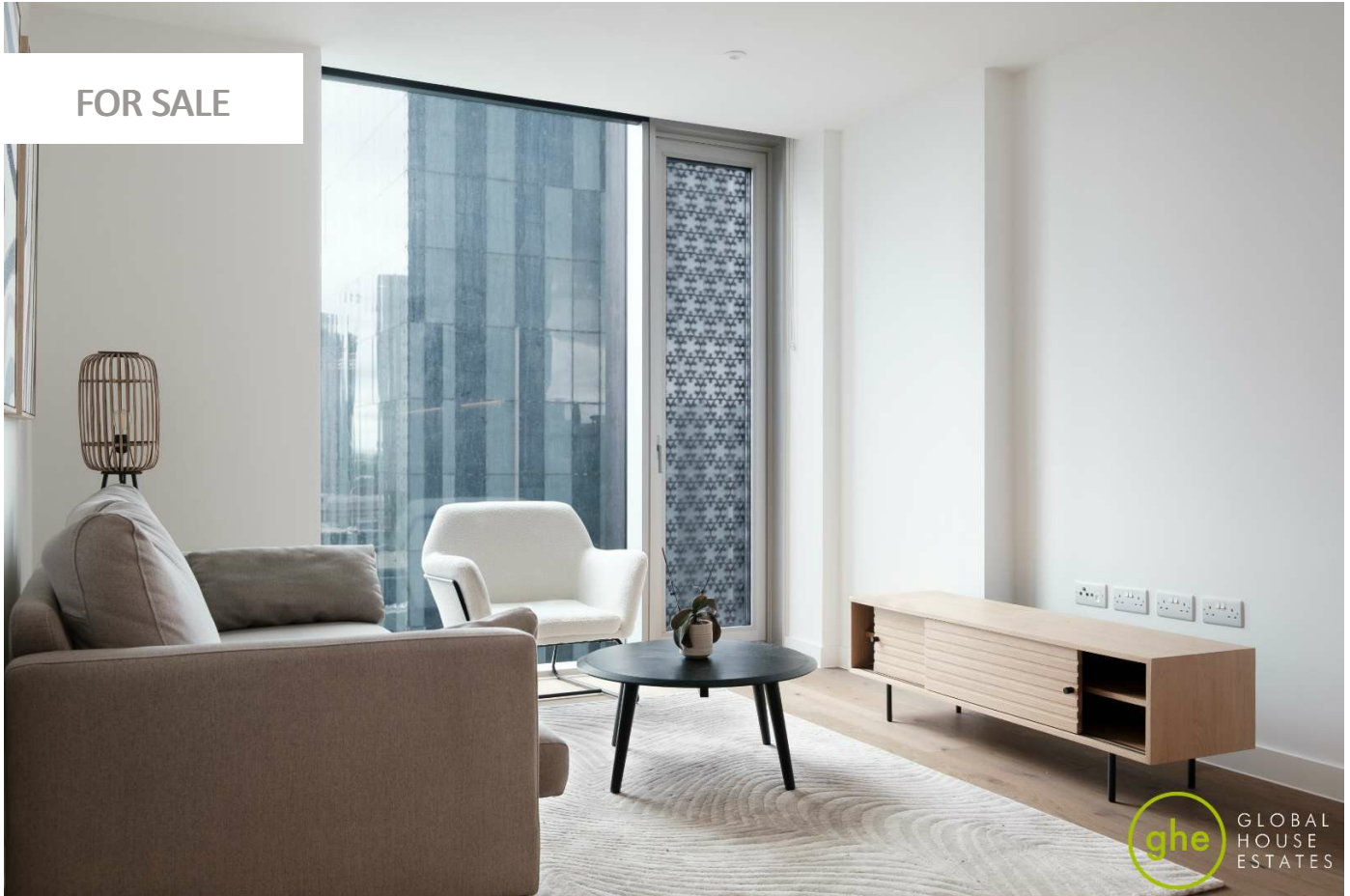
0247 401 2020 | enquiries@globalhouseestates.com

42 GREAT BRIDGEWATER STREET, MANCHESTER, GREATER MANCHESTER

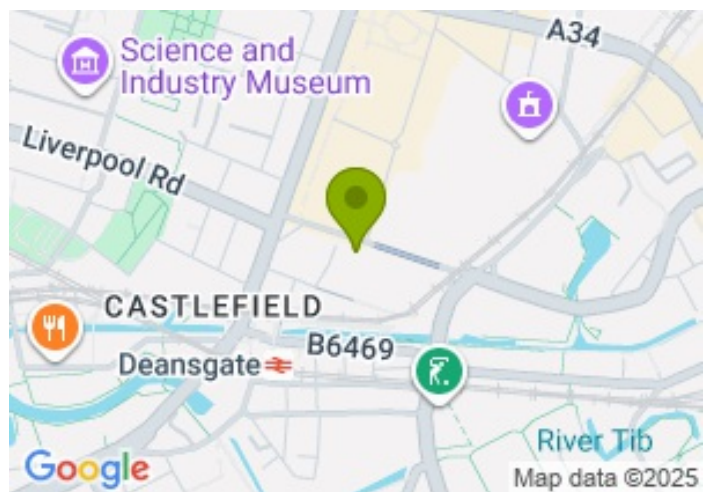
£315,000.00



FOR SALE



- One bedroom furnished apartment
- Stunning development in fantastic location
- Smart and contemporary accommodation
- Amazing resident facilities - swimming pool, gym, lounge, co-working area, cinema room and more!
- Direct access to Deansgate tram stop and train station
- 27/7 Concierge
- Available now!



Property Description

Viadux, one of the first to live in the most desired location in Manchester City Centre! The historical features around the development add a touch of charm and elegance, making an exceptional place to call home.

The high quality one bedroom apartment comprises, open plan living and dining areas with floor to ceiling windows. The kitchen equipped with integrated modern electric appliances. The spacious double bedroom comes with two separate built in wardrobes and en-suite.

Benefit from the convenience of a 24/7 concierge service, ensuring a secure and comfortable living environment. The Residents Lounge provides a place for relaxation and socialising, while the underground swimming pool and spa offer the leisure facilities to relax and unwind. Also, the building offers Gym, a cinema room, a karaoke room as well as a terrace for the residents.

Standing proudly above Castlefield Locks and strategically connected to the iconic former railway station, Manchester Central, the apartment brings a unique opportunity to those wishing to live within the heart of the city centre.

The building is anchored by a range of coffee shops, bars and restaurants. The new designated pathways combined with carefully managed public spaces will bridge the gap between Viadux and other major districts of the city centre.

This property is not to be missed. Please contact GHE to arrange your viewing!

Length of lease: approximately 249 years remaining

Service charge: circa £3044 per annum

All data and information set forth on this website regarding real property, for sale, purchase, rental and/or financing, are from sources regarded as reliable. No warranties are made as to the accuracy of any descriptions and/or other details and such information is subject to errors, omissions, changes of price, tenancies, commissions, prior sales, leases or financing, or withdrawal without notice. Square footages are approximate and may be verified by consulting a professional architect or engineer.

Viewing

Please contact our Global House Estates Ltd Office on 0207 401 2020 if you wish to arrange a viewing appointment for this property or require further information.

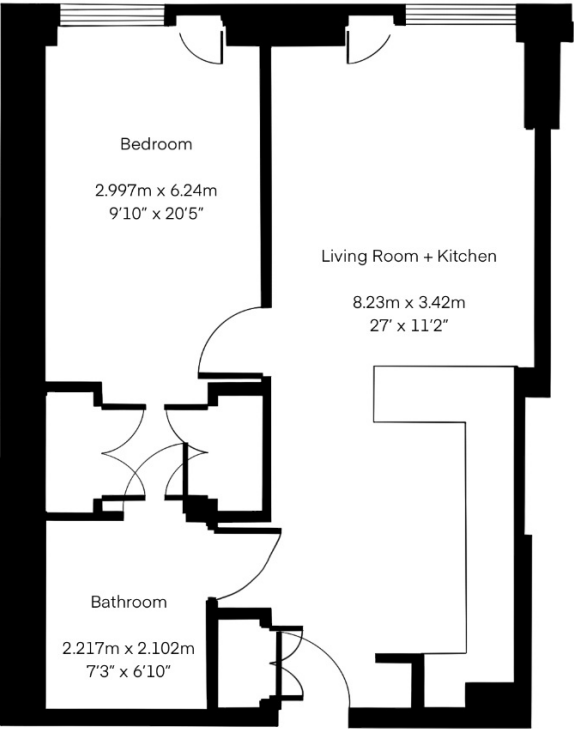
Disclaimer

This website provides information about buying, selling, renting UK property. The information is from reliable sources, but we can't guarantee that it's always accurate. There may be mistakes or

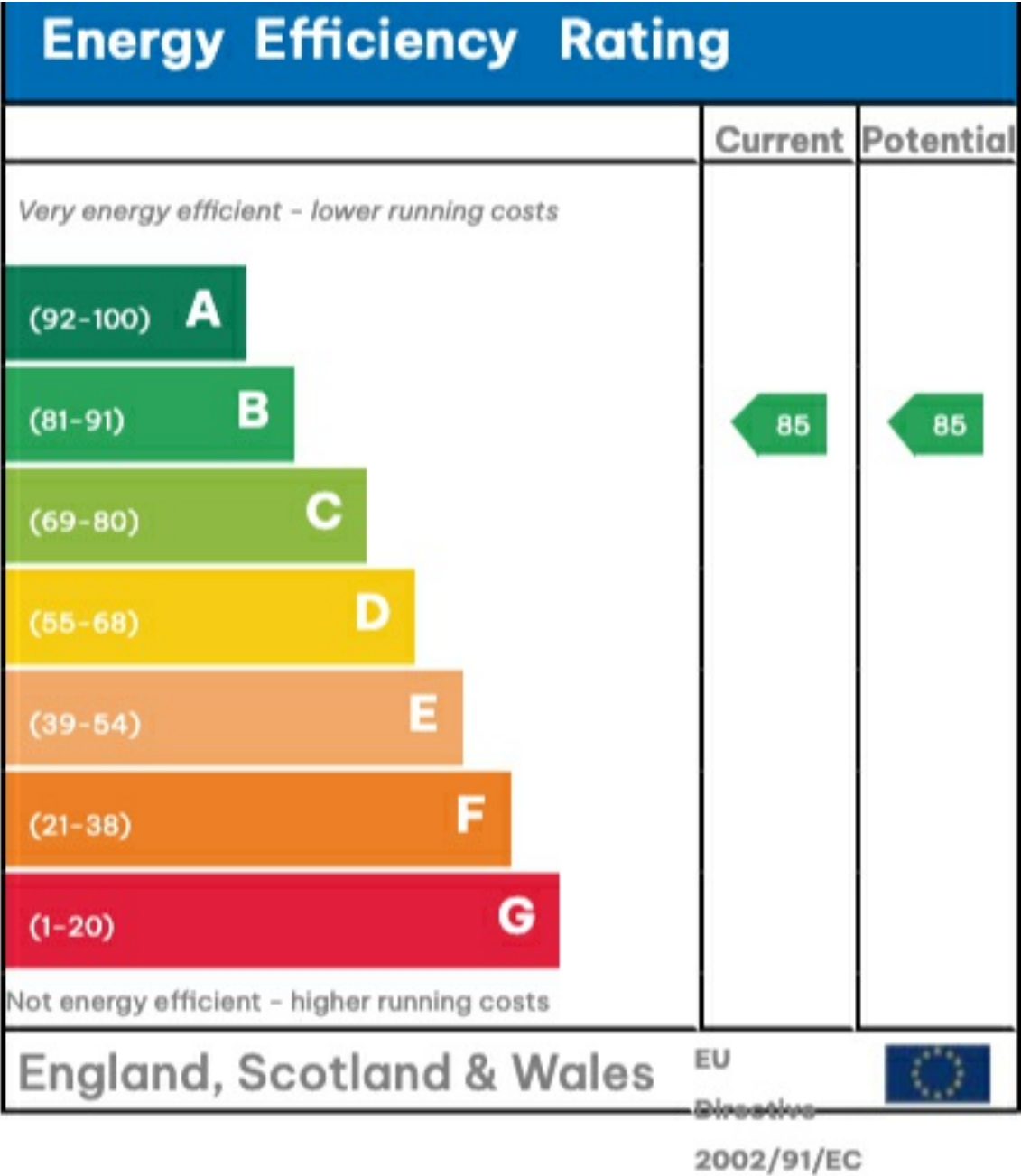
changes in the information, such as price, availability, leases, or financing. The square footage is also an estimate and should be confirmed by a professional architect or engineer.

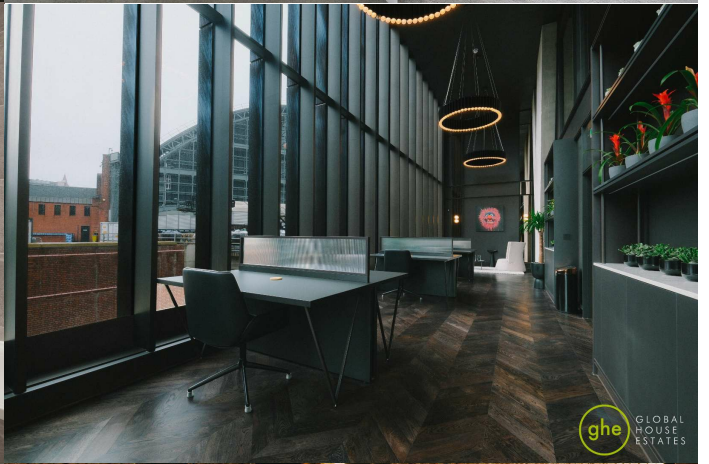
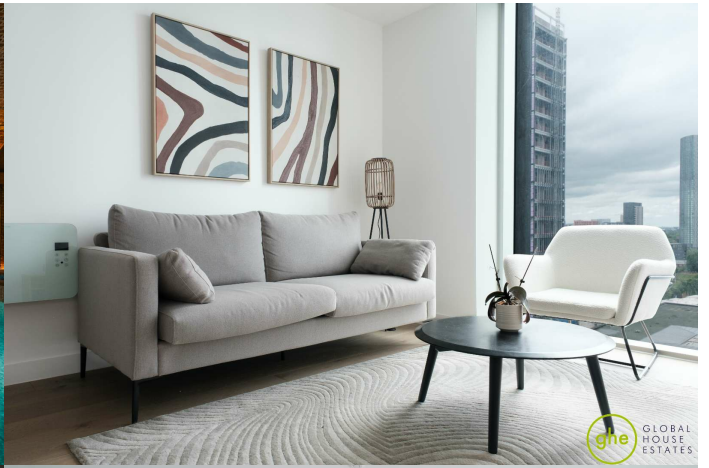
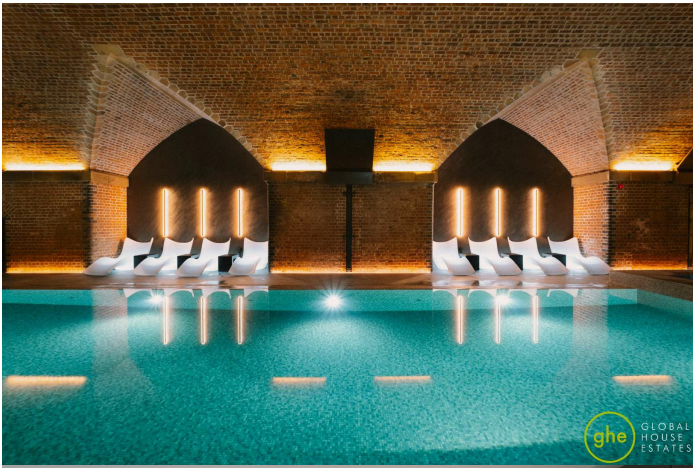
Floor plan

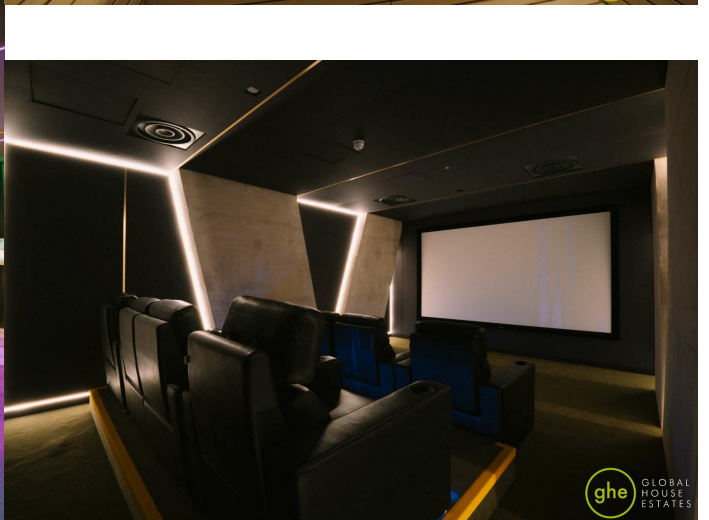
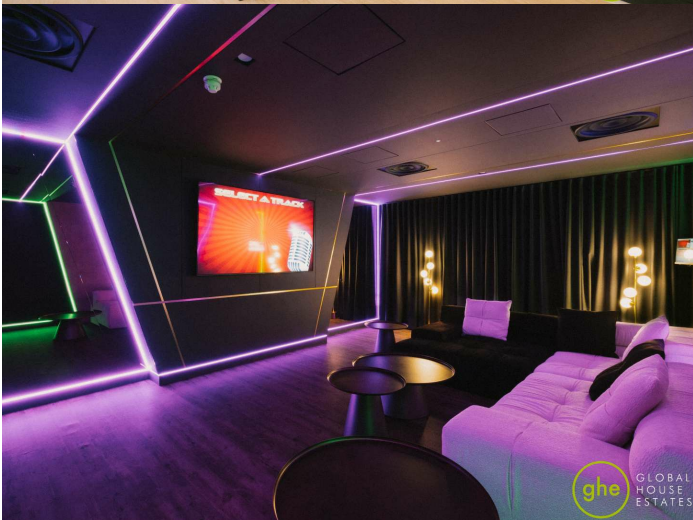
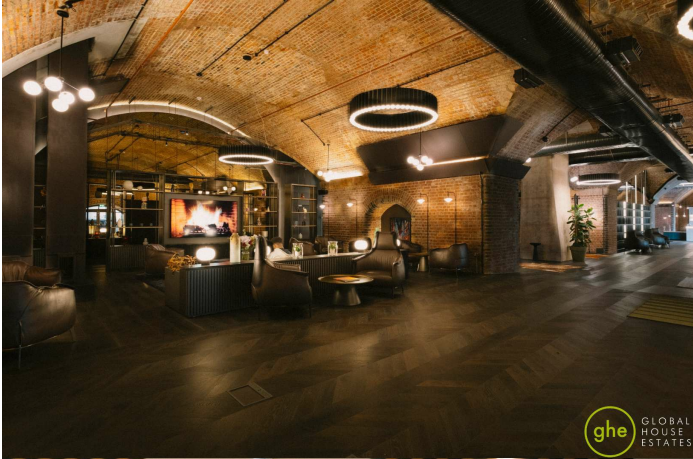
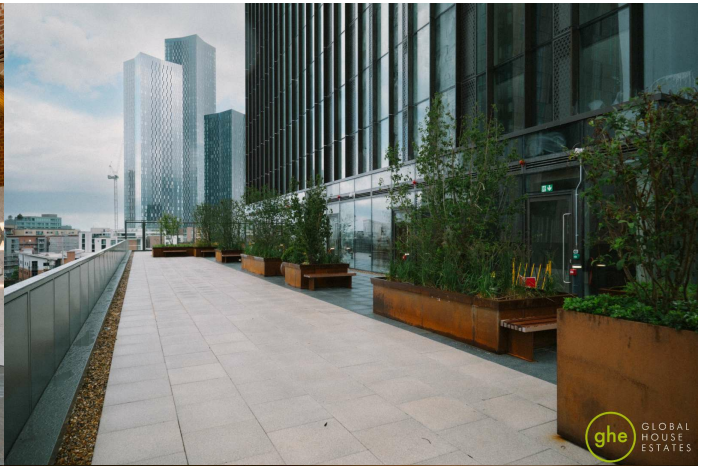
Approx. Total Area
563 sqft / 52.3 sqm



This floor plan is illustrative purposes only. It is not drawn to scale. Any measurements, floor areas (including any total floor area), openings and orientation are approximate. No details are guaranteed, they cannot be relied upon for any purpose and they do not form part of any agreement. No liability is taken for any error, omission or misstatement. A party must reply upon its own inspection(s).









35a St Georges Road, London,
SE1 6EW
+44 (0) 207 401 2020

<https://globalhouseestates.com>

Level 24, Lee Garden One,
33 Hysan Ave, Causeway Bay,
Hong Kong
+852 3963 8411