

0247 401 2020 | enquiries@globalhousestates.com

## FOUNTAIN PARK WAY, WHITECITY, LONDON

£3,000.00



FOR LET



- Fully furnished
- Westfield Shopping center
- Comfort cooling and underfloor heating
- Concierge, Gym, Pool, Cinema, Resident lounge and meeting room
- Balcony
- Conveniently between White City and Wood Lane



## Property Description

This very stylish, 1 double bedroom apartment set in White City Living Development situated within the heart of Shepherds Bush. The property enjoys easy access to a number of transport stations, with Wood Land, White City & Shepherds Bush Underground, Overground & Train Stations being close by (Central, Circle, District, Hammersmith & City Lines, Overground & Southern Trains). There are also plenty of local buses available along the area.

Internal garden facing apartment offers a quiet and luxurious living environment far from the hassle and bustle of the street. Property comprises of a large open plan living room with L shaped kitchen and floor to ceiling windows into the balcony, a large double bed room with 2 storage cupboard, porcelain tiled bath suite and a large separated storage cupboard offers excellent flexibility for residents

24 hour concierge is in operation now, Tenant will enjoy the use of a luxury Gym, Huge swimming pool with experience pool in mid 2020, resident lounge cineplex and much more!

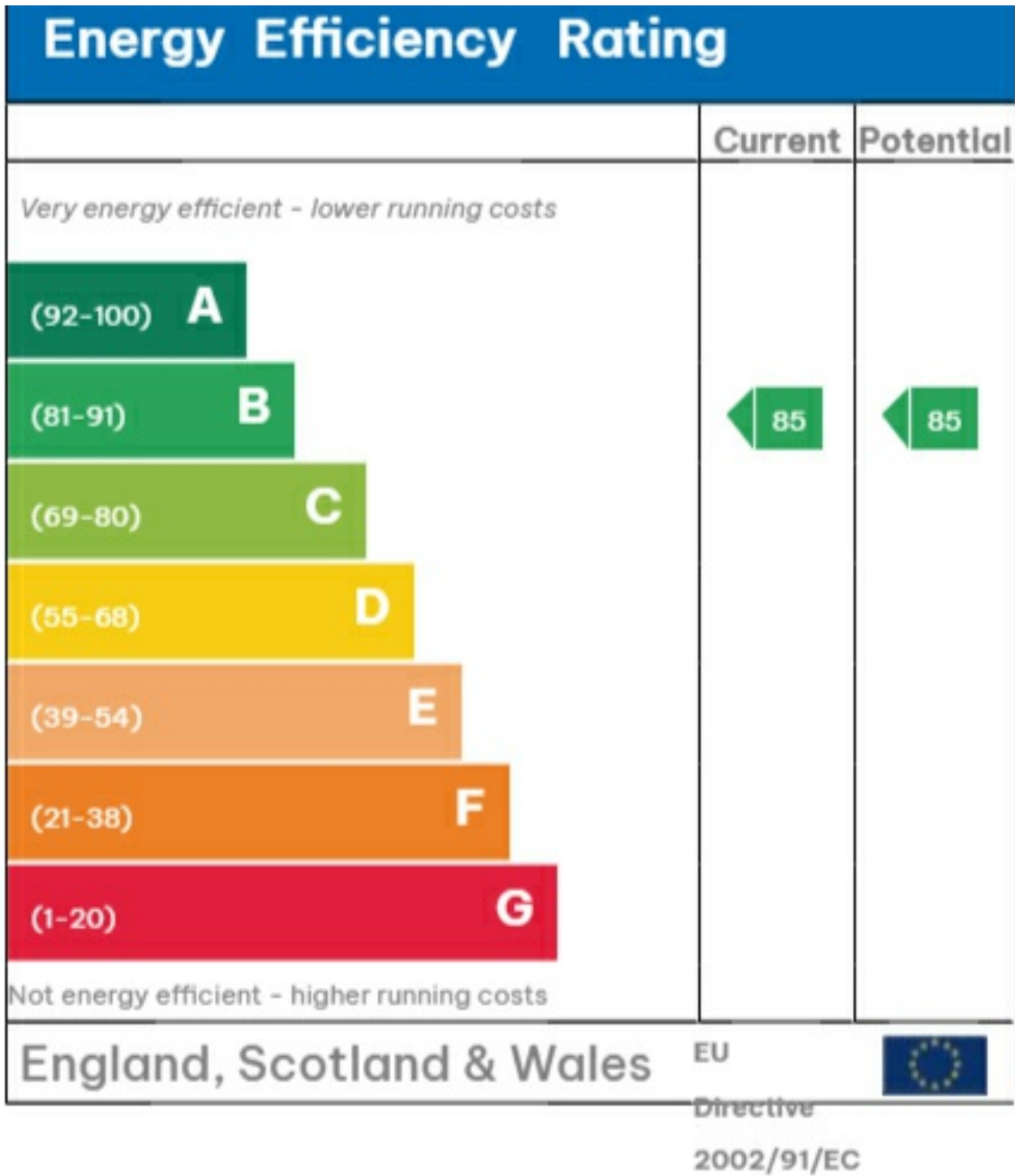
## Viewing

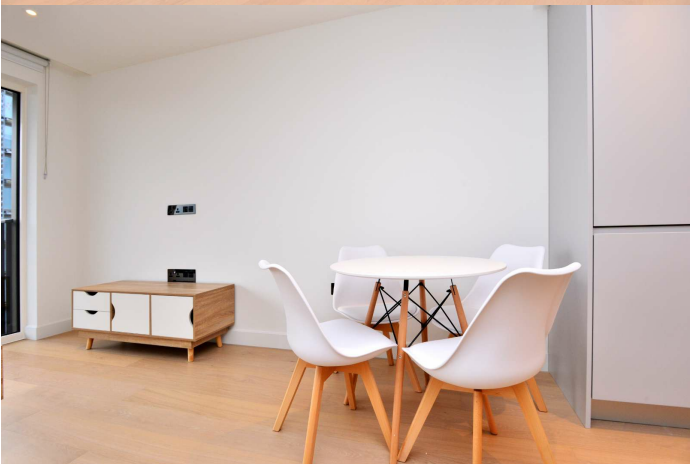
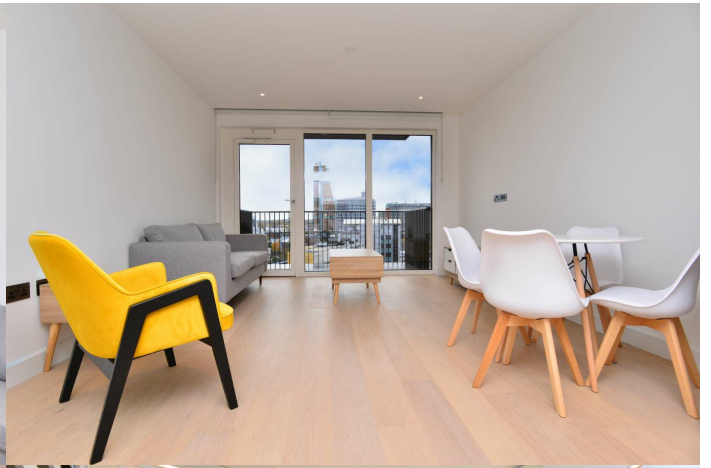
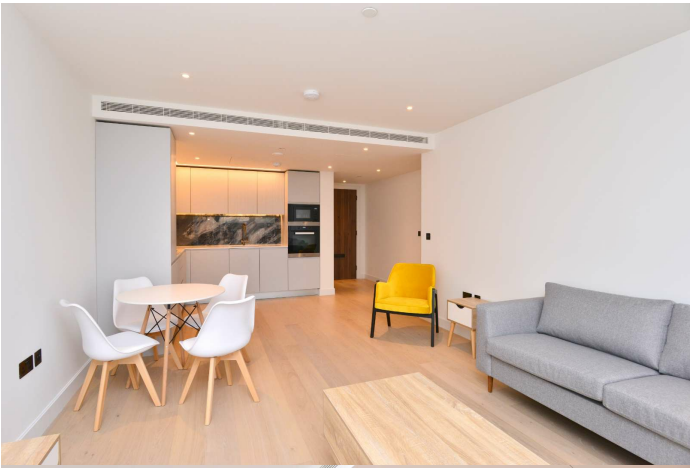
Please contact our Global House Estates Ltd Office on 0207 401 2020 if you wish to arrange a viewing appointment for this property or require further information.

## Disclaimer

This website provides information about buying, selling, renting UK property. The information is from reliable sources, but we can't guarantee that it's always accurate. There may be mistakes or changes in the information, such as price, availability, leases, or financing. The square footage is also an estimate and should be confirmed by a professional architect or engineer.

# EPC

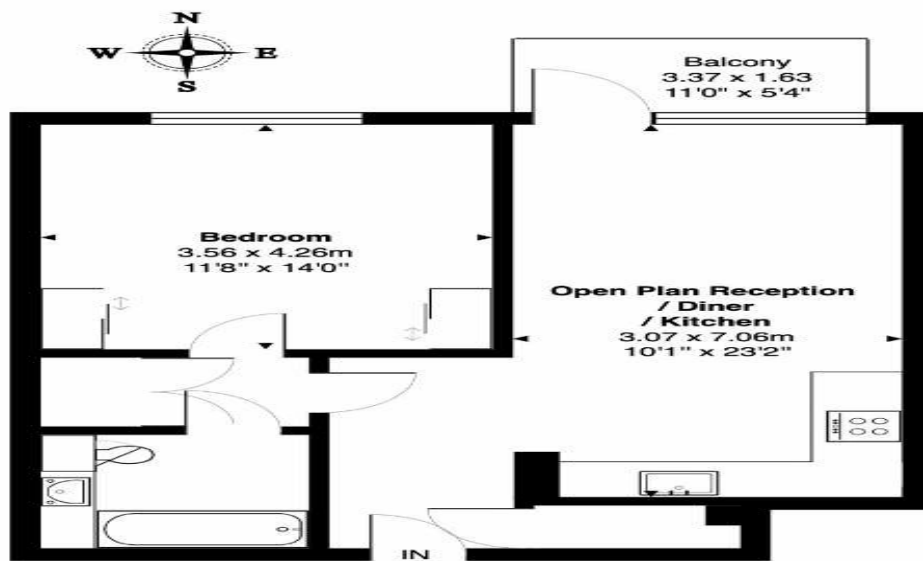






**Lincoln Apartments, Fountain Park, W12**

Total Area: 53.3 m<sup>2</sup> ... 574 ft<sup>2</sup>



Seventh Floor

This Floorplan is provided without warranty, of any kind.  
 Bespoke Plans disclaims any warranty including,  
 without limitation, satisfaction, quality or accuracy of any dimensions