

LONGFIELD ESTATE, BERMONDSEY, LONDON

£600.00



FOR LET



- Three double bedrooms
- Split level
- Separate kitchen
- Furnished
- Classic details such as wooden trims, an ornate fireplace, and stylish light fittings enhance the charm of the home.
- Situated in Bermondsey, close to transport links, local amenities, and green spaces.



## Property Description

A three double bedroom split level ex local authority flat located in Longfield Estate off Lynton Road SE1. Property comprises of a large reception, separate kitchen, three double bedrooms and bathroom. Featuring elegant wood flooring, a beautiful period-style fireplace, and large windows that allow plenty of natural light.

Property is located in a wonderfully quiet tree lined street with most necessities a short walk away. Bermondsey and Borough stations are walking distance with shops and restaurants nearby.

## Viewing

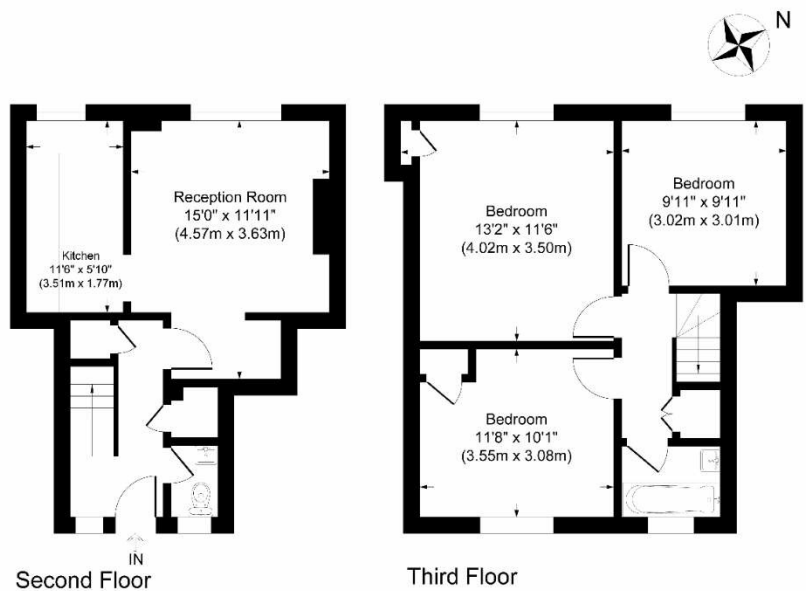
Please contact our Global House Estates Ltd Office on 0207 401 2020 if you wish to arrange a viewing appointment for this property or require further information.

## Disclaimer

This website provides information about buying, selling, renting UK property. The information is from reliable sources, but we can't guarantee that it's always accurate. There may be mistakes or changes in the information, such as price, availability, leases, or financing. The square footage is also an estimate and should be confirmed by a professional architect or engineer.



# Floor plan



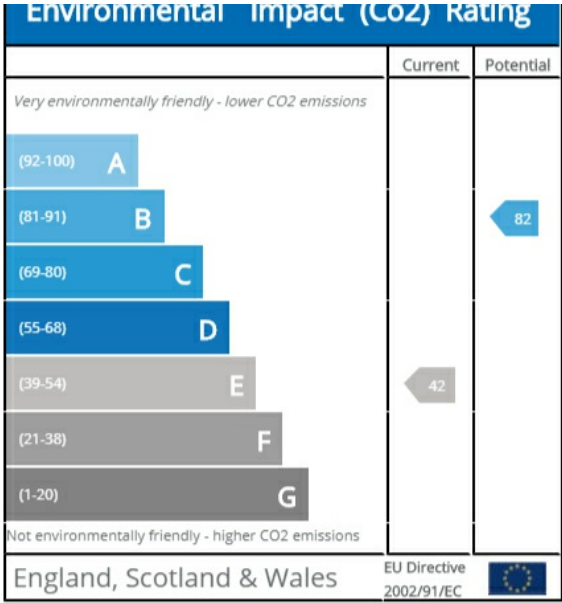
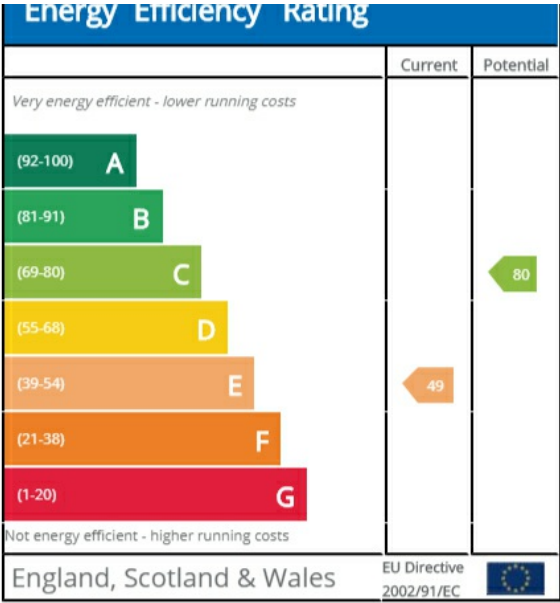
## Stansfeld House Longfield Estate, Bermondsey

Approximate Gross Internal Area  
Second Floor = 31.0 sq m / 334 sq ft  
Third Floor = 43.8 sq m / 472 sq ft  
Total = 74.8 sq m / 806 sq ft

This plan is for layout guidance only. Not drawn to scale unless stated. Windows and door openings are approximate. Whilst every care is taken in the preparation of this plan, please check all dimensions, shapes and compass bearings before making any decisions reliant upon them.

powered by:  
**THE360IMAGE**  
[www.the360image.co.uk](http://www.the360image.co.uk)

EPC















35a St Georges Road, London,  
SE1 6EW  
+44 (0) 207 401 2020

<https://globalhouseestates.com>

Level 24, Lee Garden One,  
33 Hysan Ave, Causeway Bay,  
Hong Kong  
+852 3963 8411