

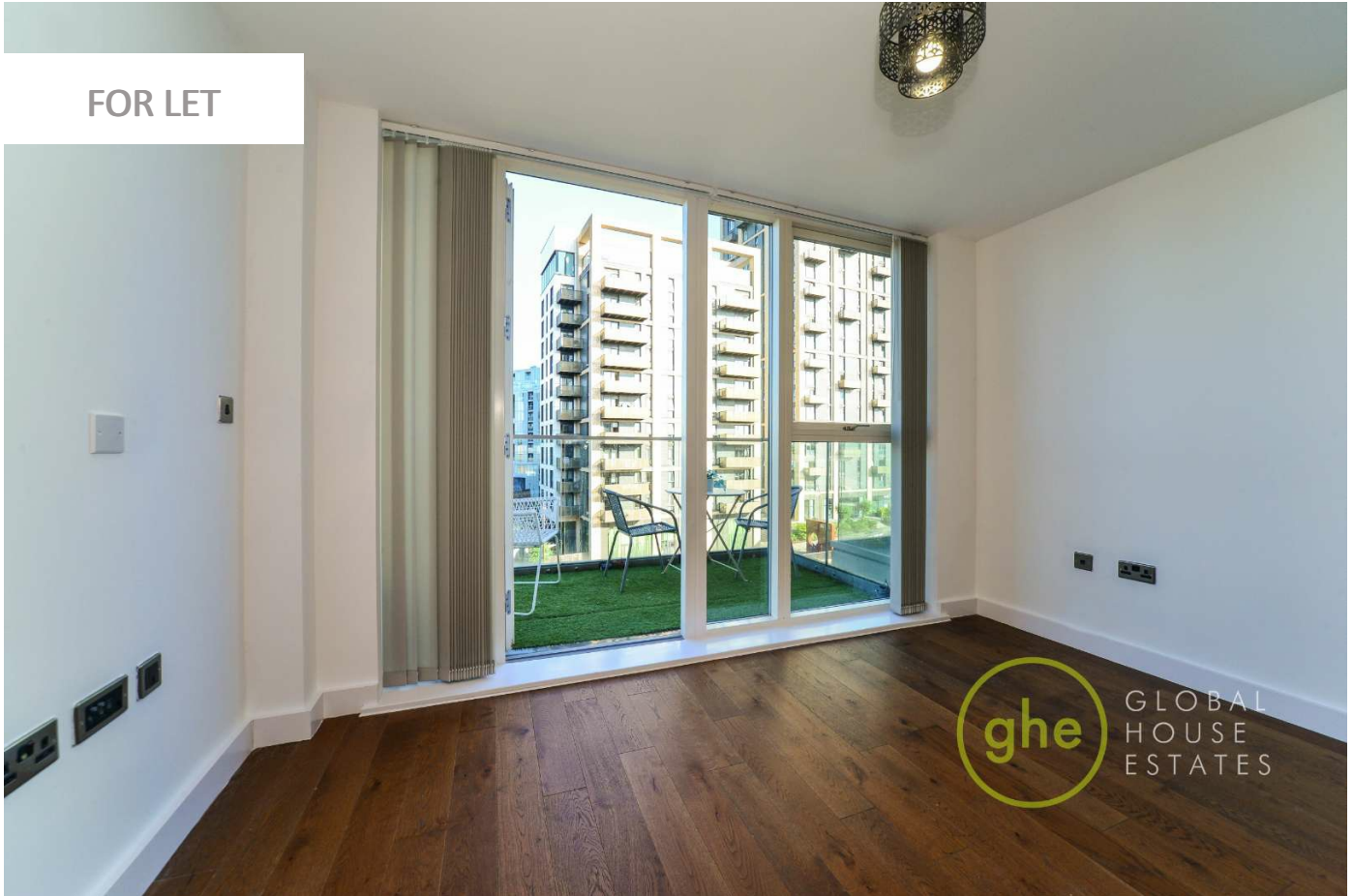
0247 401 2020 | enquiries@globalhousestates.com

NORMAN ROAD, GREENWICH, LONDON

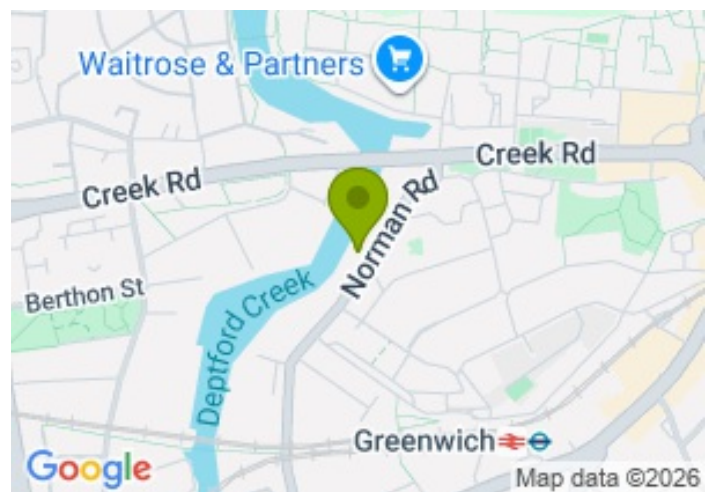
£2,300.00



FOR LET



- Two double bedrooms
- River views
- Outdoor area
- Light and airy
- En-suite bathroom



Property Description

We are delighted to introduce this exceptional modern two-bedroom, two-bathroom apartment, perfectly situated in the highly sought-after Greenwich area.

This stylish residence features two generously sized double bedrooms, including a luxurious en-suite in the master bedroom, a sleek and contemporary open-plan living room and kitchen, and a beautifully designed main bathroom. The standout feature is the expansive private balcony, offering breathtaking panoramic views of the iconic River Thames—an ideal space to relax or entertain while soaking in the scenery.

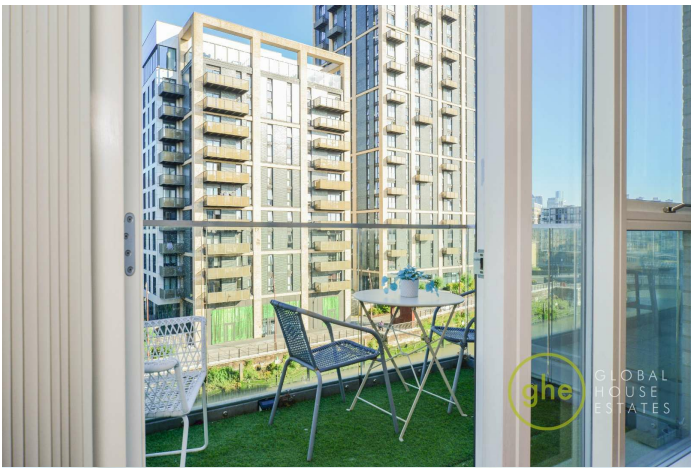
Designed with comfort and sophistication in mind, this apartment seamlessly combines modern elegance with a prime location, providing an outstanding living experience in one of London's most desirable neighbourhoods.

Viewing

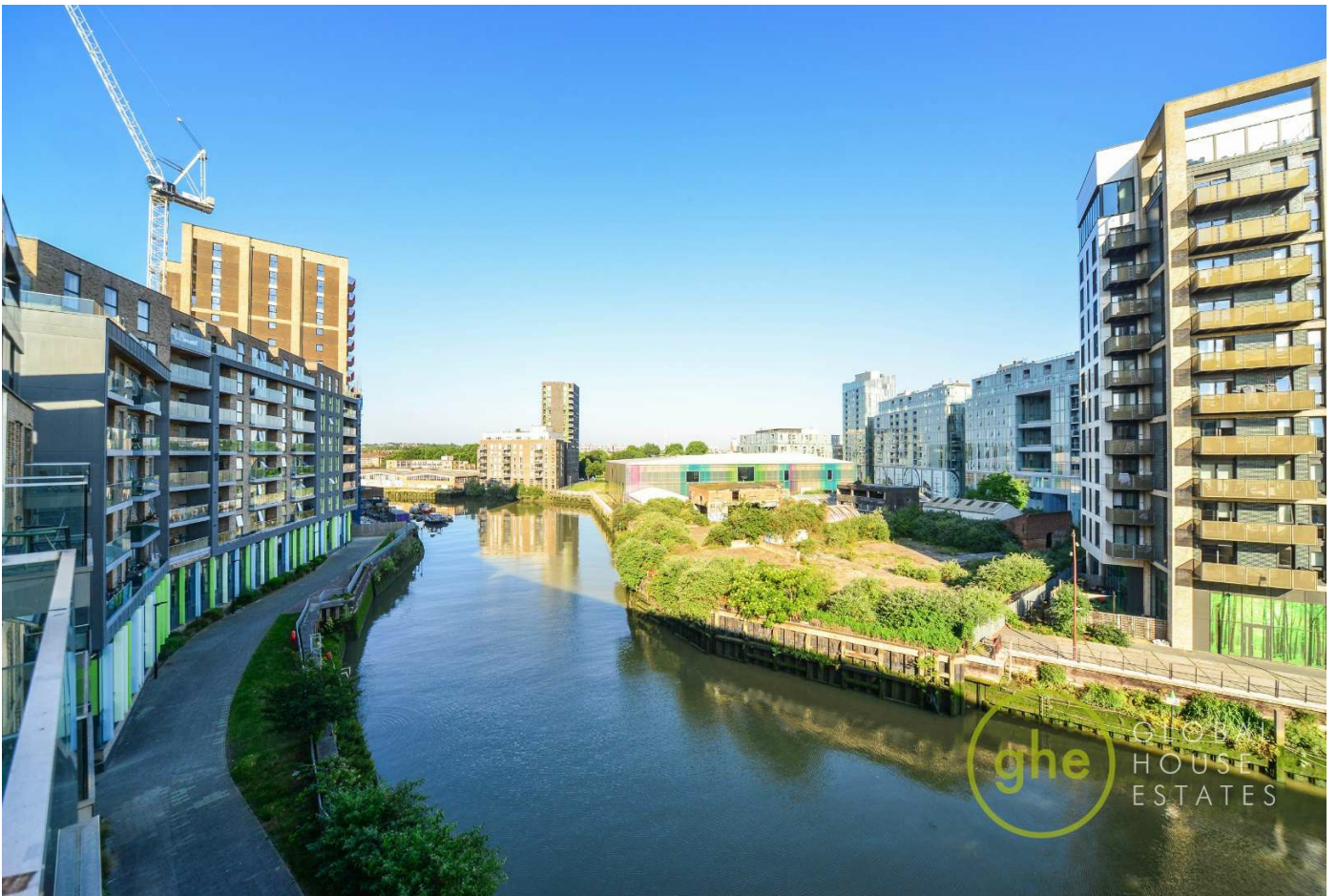
Please contact our Global House Estates Ltd Office on 0207 401 2020 if you wish to arrange a viewing appointment for this property or require further information.

Disclaimer

This website provides information about buying, selling, renting UK property. The information is from reliable sources, but we can't guarantee that it's always accurate. There may be mistakes or changes in the information, such as price, availability, leases, or financing. The square footage is also an estimate and should be confirmed by a professional architect or engineer.







35a St Georges Road, London,
SE1 6EW
+44 (0) 207 401 2020

<https://globalhouseestates.com>

Level 24, Lee Garden One,
33 Hysan Ave, Causeway Bay,
Hong Kong
+852 3963 8411