

0247 401 2020 | [enquiries@globalhouseestates.com](mailto:enquiries@globalhouseestates.com)

**SHADWELL STREET, SNOWHILL WHARF, BIRMINGHAM**

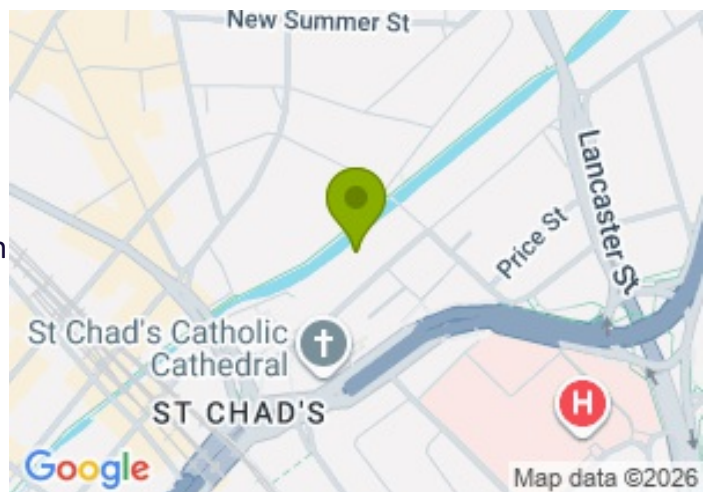
£1,500.00



FOR LET



- Spacious two double bedroom apartment
- Private balcony with canal view
- Furnished or Unfurnished - landlord is flexible
- Superb facilities, including gym, sauna, steam room, cinema and resident lounge
- 5 minutes walk to Snowhill Station
- Available now!



## Propety Description

This stunning two double bedroom, two bathroom, spacious apartment brings luxury, canal side living to Birmingham. Right in the heart of the city, the apartment developed by St Joseph (part of premier developer Berkeley Homes) offers spacious accommodation, filled with natural light and with views over the canal. There are wood floors, a dual aspect living room, private balcony, a smart integrated open plan kitchen, luxury bathrooms and well proportioned bedrooms.

Snow Hill Wharf is just moments from major transport connections at Snow Hill Station and New Street Station. Close to Birmingham's fantastic array of shops and restaurants. Ideal for those who enjoy the advantages of urban living, excellent transport connections, city centre amenities and incredible resident club style facilities. plus a stunning canal-side podium garden.

Please contact GHE to arrange a viewing!

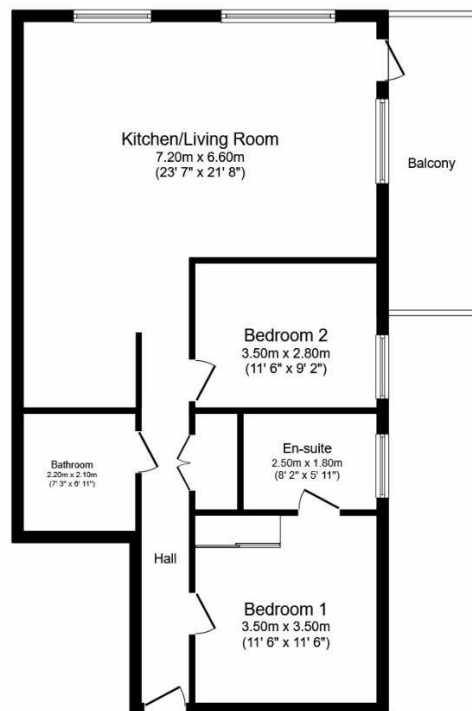
## Viewing

Please contact our Global House Estates Ltd Office on 0207 401 2020 if you wish to arrange a viewing appointment for this property or require further information.

## Disclaimer

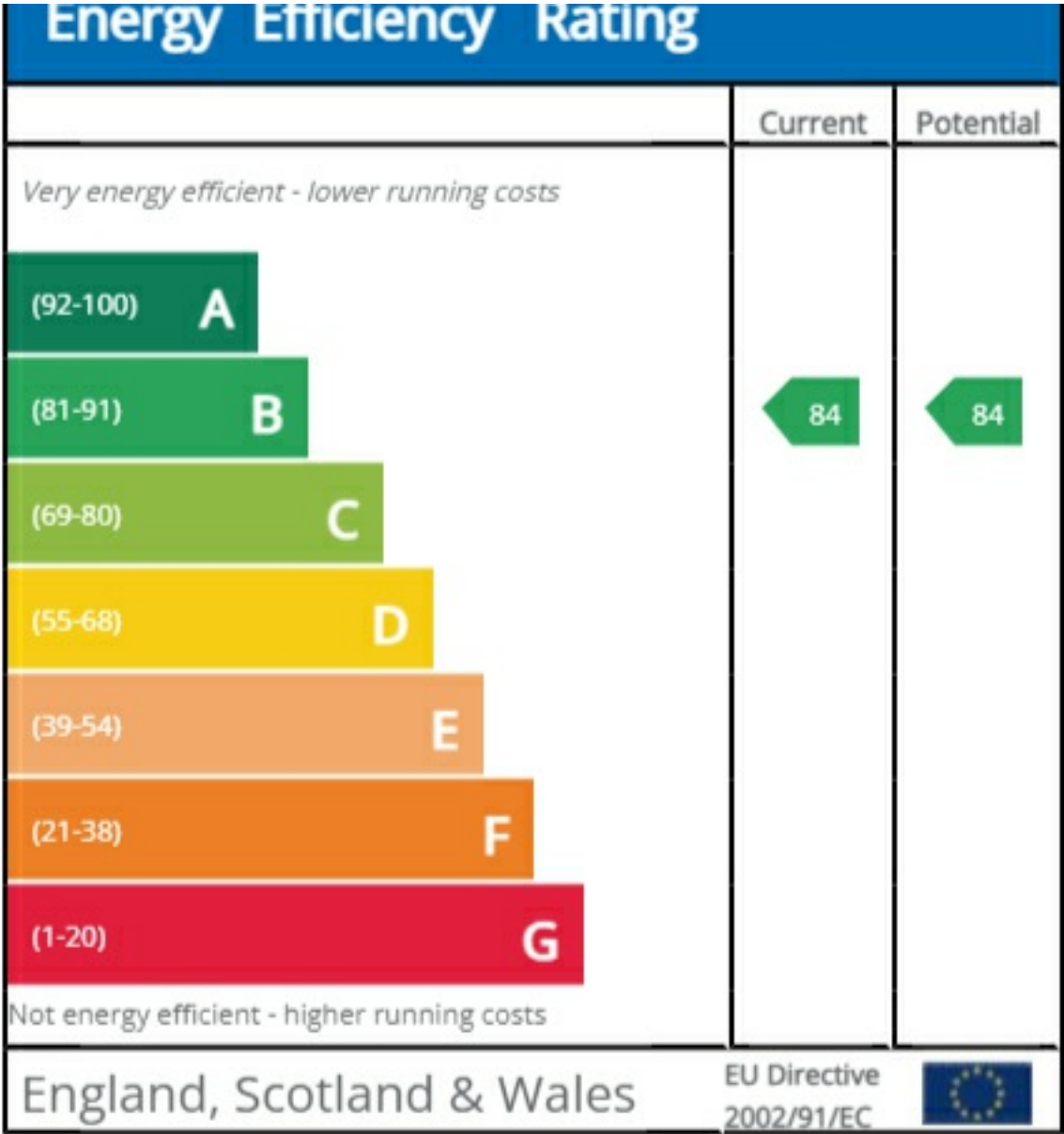
This website provides information about buying, selling, renting UK property. The information is from reliable sources, but we can't guarantee that it's always accurate. There may be mistakes or changes in the information, such as price, availability, leases, or financing. The square footage is also an estimate and should be confirmed by a professional architect or engineer.

# Floor plan

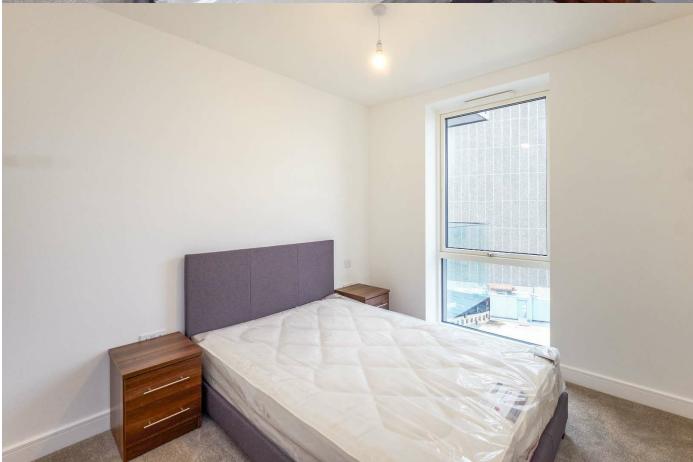
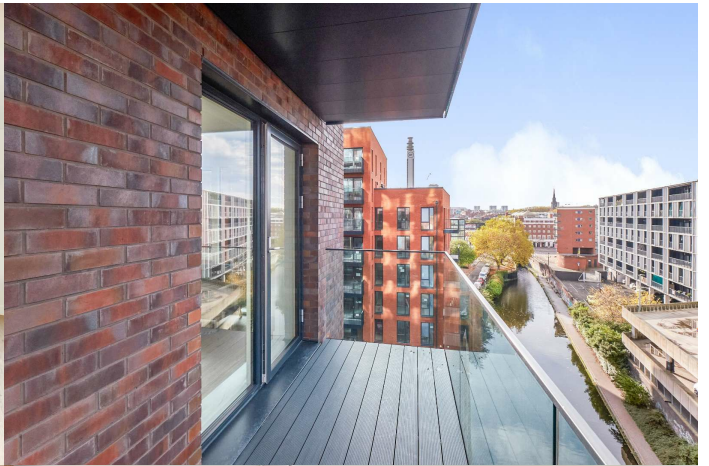


This floor plan is for illustrative purposes only. It is not drawn to scale. Any measurements, floor areas (including any total floor area), openings and orientation are approximate. No details are guaranteed, they cannot be relied upon for any purpose and they do not form part of any agreement. No liability is taken for any error, omission or misstatement. A party must rely upon its own inspection(s).  
Powered by [www.focalagent.com](http://www.focalagent.com)

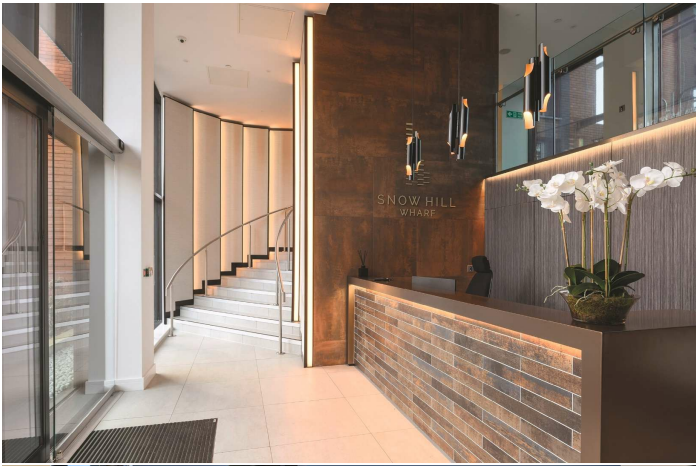
EPC













35a St Georges Road, London,  
SE1 6EW  
+44 (0) 207 401 2020

<https://globalhouseestates.com>

Level 24, Lee Garden One,  
33 Hysan Ave, Causeway Bay,  
Hong Kong  
+852 3963 8411