

0247 401 2020 | [enquiries@globalhouseestates.com](mailto:enquiries@globalhouseestates.com)

**316 LYNTON ROAD, BERMONDSEY, LONDON**

£400.00



**FOR LET**



- One double bedroom
- First floor of a modern purpose built block
- Communal courtyard
- Floor to ceiling windows
- Juliet balcony



## Property Description

A spacious one double bedroom flat located on the first floor of a modern purpose built block in the heart of Bermondsey SE1. The well presented property comprises of an open plan reception with doors to Juliet balcony, fitted kitchen, double bedroom and white three piece bathroom suite . The property also benefits from floor to ceiling windows, communal gardens and on street parking.

## Viewing

Please contact our Global House Estates Ltd Office on 0207 401 2020 if you wish to arrange a viewing appointment for this property or require further information.

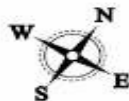
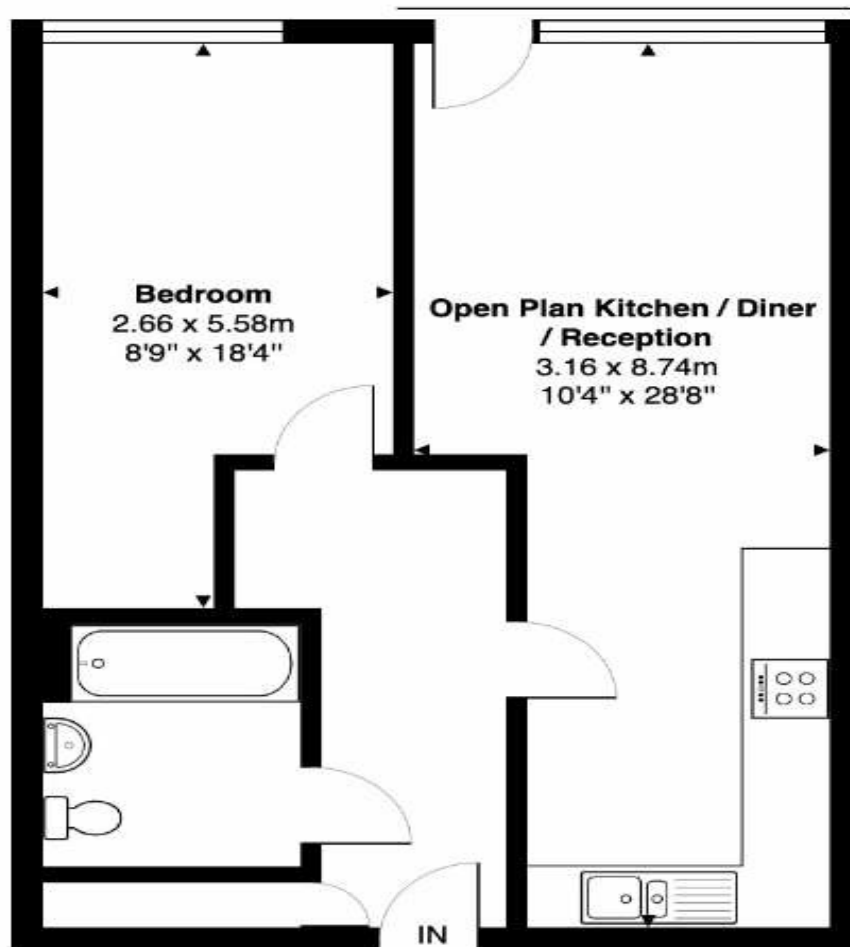
## Disclaimer

This website provides information about buying, selling, renting UK property. The information is from reliable sources, but we can't guarantee that it's always accurate. There may be mistakes or changes in the information, such as price, availability, leases, or financing. The square footage is also an estimate and should be confirmed by a professional architect or engineer.

# Floor plan

## Corelli Court, Lynton Way, SE1

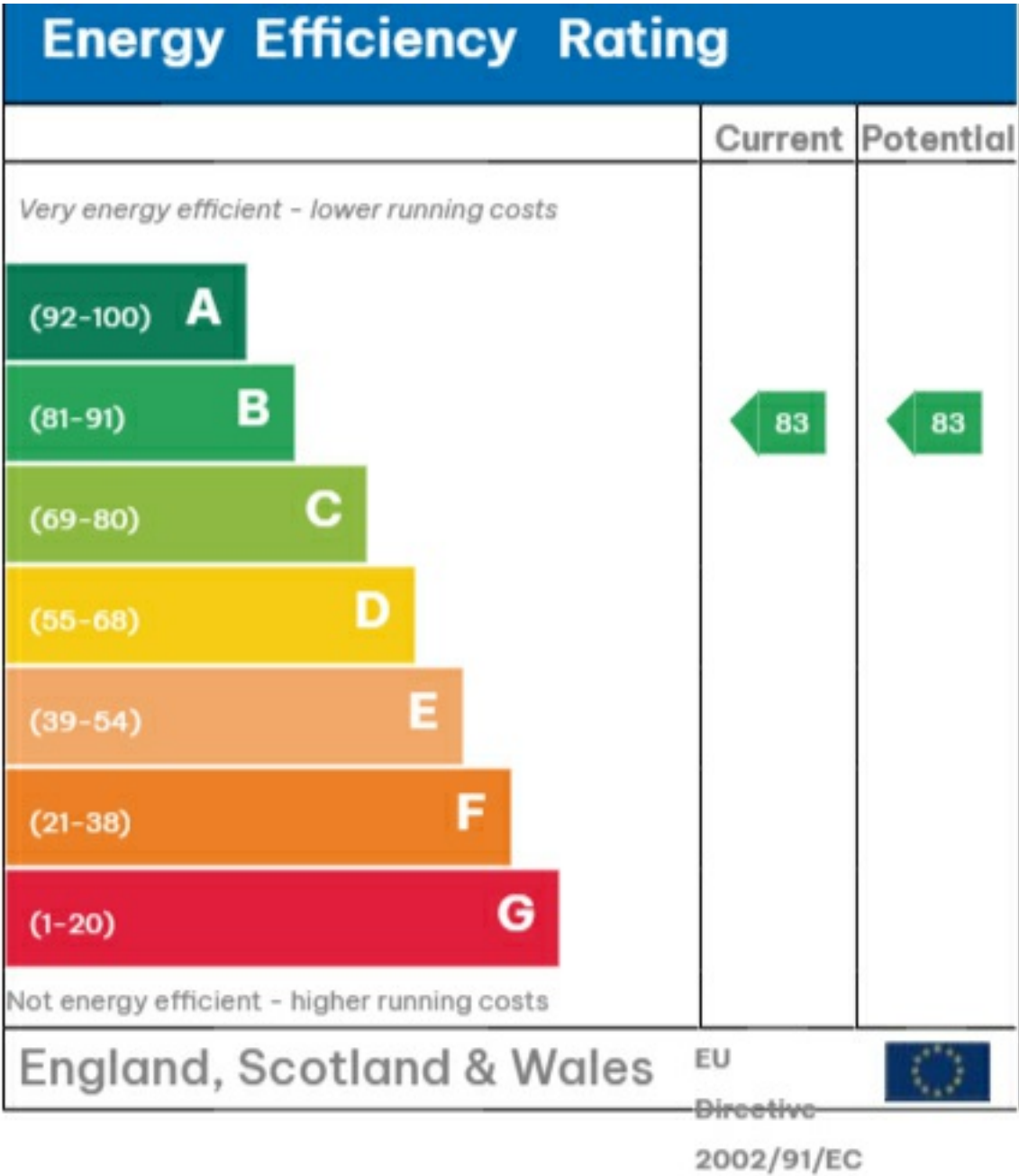
Total Area: 52.3 m<sup>2</sup> ... 563 ft<sup>2</sup>



Second Floor

This Floorplan is provided without warranty, of any kind.  
Bespoke Plans disclaims any warranty including,  
without limitation, satisfaction, quality or accuracy of any dimensions

EPC









35a St Georges Road, London,  
SE1 6EW  
+44 (0) 207 401 2020

<https://globalhouseestates.com>

Level 24, Lee Garden One,  
33 Hysan Ave, Causeway Bay,  
Hong Kong  
+852 3963 8411