

£570.00

11 Makers Yard, Bromley By Bow, London E3 3YP



PROPERTY OVERVIEW

2 Bedrooms 2 Bathrooms 1 Reception

A superb, brand new two double bedroom, two bathroom 18th floor apartment in the Three Waters development in Bow Creek. The apartment offers stunning views towards Canary Wharf one way and Stratford the other whilst overlooking the attractive River Lea and Bow Creek. There is a high quality interior with an integrated, open plan kitchen reception room, two large double bedrooms with an en suite to the principal and a further luxury bathroom. There is also a spacious terrace to enjoy the views from.

The development offers a 24 hour concierge, cinema room, residents room and a podium level residents garden. Three Waters is conveniently located moments from the river and in near proximity to Stratford, offering rich history and a flourishing mixture of boutique shops and restaurants alongs ...

35a St Georges Road,
London SE1 6EW

+44 (0) 207 401 2020

www.globalhouseestates.com

4th Floor, Lee Garden 3,
Causeway Bay, Hong Kong

+852 3963 8411

SALES | LETTINGS | PROPERTY MANAGEMENT | PROPERTY INVESTMENTS



35a St Georges Road,
London SE1 6EW

+44 (0) 207 401 2020

www.globalhouseestates.com

4th Floor, Lee Garden 3,
Causeway Bay, Hong Kong

+852 3963 8411

SALES | LETTINGS | PROPERTY MANAGEMENT | PROPERTY INVESTMENTS



35a St Georges Road,
London SE1 6EW

+44 (0) 207 401 2020

www.globalhouseestates.com

4th Floor, Lee Garden 3,
Causeway Bay, Hong Kong

+852 3963 8411

SALES | LETTINGS | PROPERTY MANAGEMENT | PROPERTY INVESTMENTS



35a St Georges Road,
London SE1 6EW

+44 (0) 207 401 2020

www.globalhouseestates.com

4th Floor, Lee Garden 3,
Causeway Bay, Hong Kong

+852 3963 8411

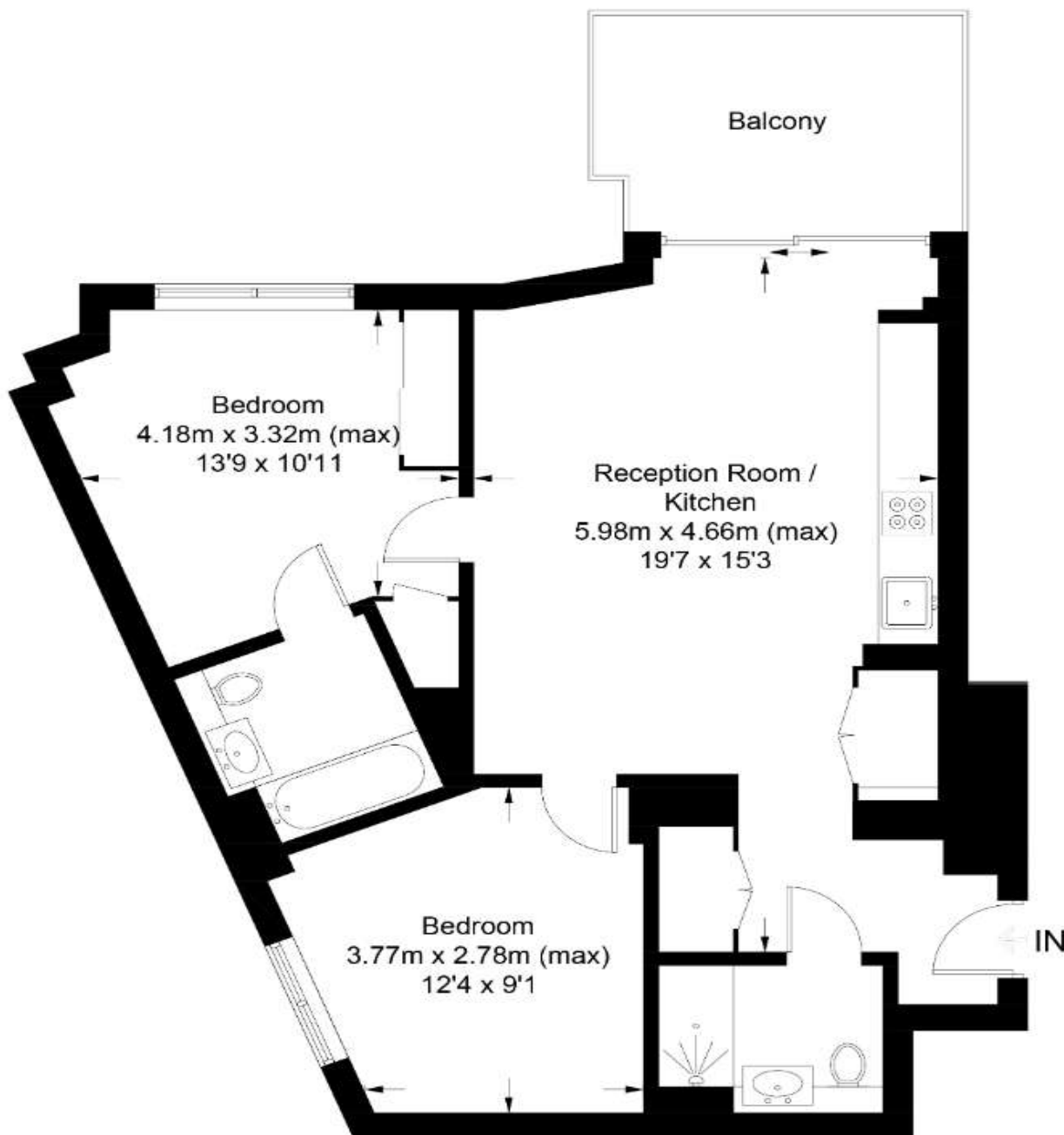
SALES | LETTINGS | PROPERTY MANAGEMENT | PROPERTY INVESTMENTS



GLOBAL
HOUSE
ESTATES

Skyline Apartments, E14

Approximate Gross Internal Area = 72.8 sq m / 784 sq ft



Eighteenth Floor

This floor plan is for representation purposes only and is not drawn to scale.

The Gross Internal Area includes outbuildings shown on the plan.

Whilst every attempt has been made to ensure the accuracy of the plan measurements of doors, windows and rooms are approximate only and should be checked before making any decisions reliant upon them.

Copyright Bespokeplans.co.uk (ID874667)

35a St Georges Road,
London SE1 6EW

+44 (0) 207 401 2020

www.globalhouseestates.com

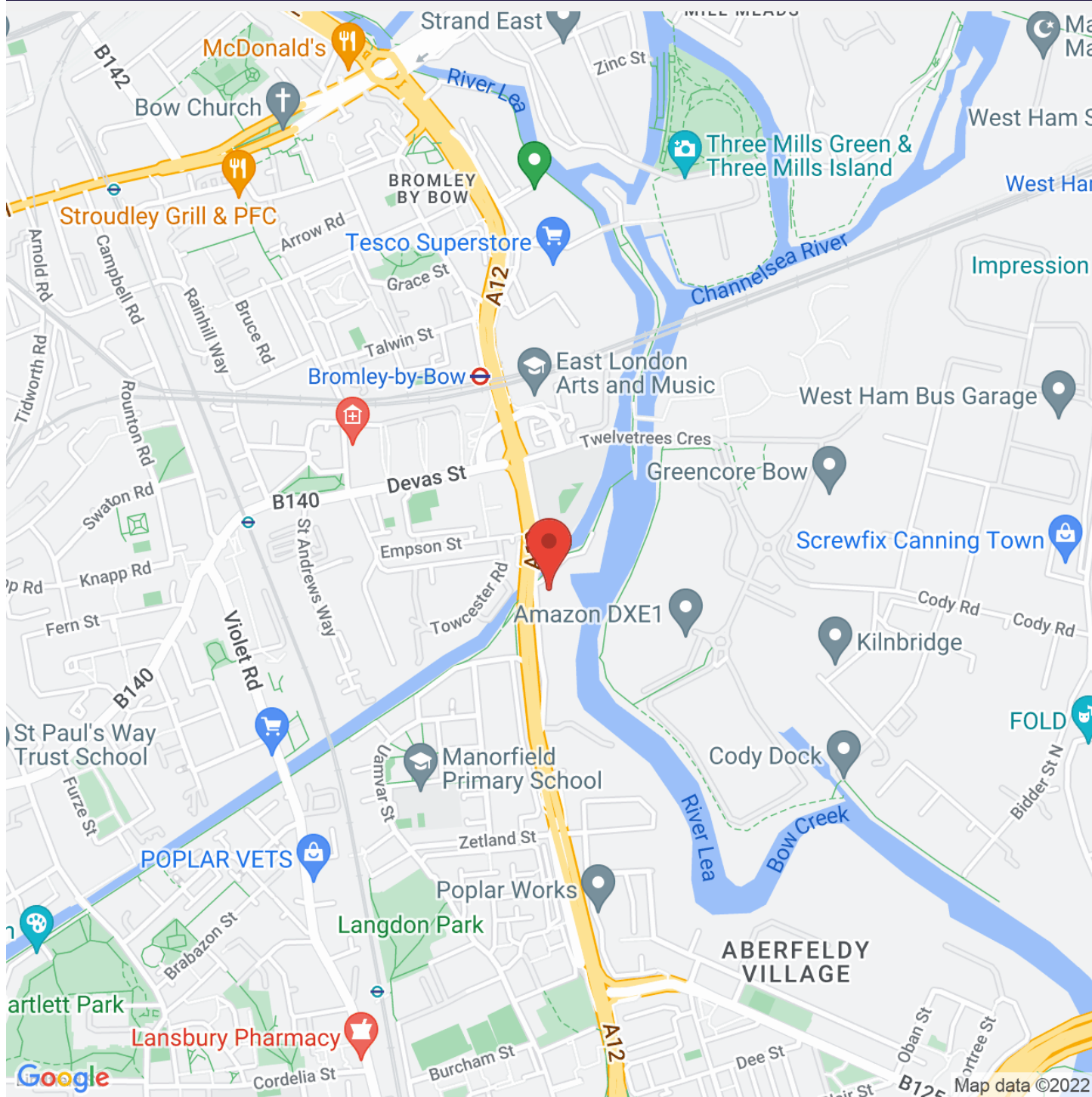
4th Floor, Lee Garden 3,
Causeway Bay, Hong Kong

+852 3963 8411

SALES | LETTINGS | PROPERTY MANAGEMENT | PROPERTY INVESTMENTS



GLOBAL
HOUSE
ESTATES



35a St Georges Road,
London SE1 6EW

+44 (0) 207 401 2020

www.globalhouseestates.com

4th Floor, Lee Garden 3,
Causeway Bay, Hong Kong

+852 3963 8411

SALES | LETTINGS | PROPERTY MANAGEMENT | PROPERTY INVESTMENTS